

## On the decreasing trend of the number of monsoon depressions in the Bay of Bengal

This content has been downloaded from IOPscience. Please scroll down to see the full text.

2016 Environ. Res. Lett. 11 014011

(<http://iopscience.iop.org/1748-9326/11/1/014011>)

View [the table of contents for this issue](#), or go to the [journal homepage](#) for more

Download details:

IP Address: 210.77.64.106

This content was downloaded on 30/03/2017 at 11:54

Please note that [terms and conditions apply](#).

You may also be interested in:

[Shift in Indian summer monsoon onset during 1976/1977](#)

A S Sahana, Subimal Ghosh, Auroop Ganguly et al.

[Decreasing intensity of monsoon low-frequency intraseasonal variability over India](#)

Nirupam Karmakar, Arindam Chakraborty and Ravi S Nanjundiah

[Prediction of Indian rainfall during the summer monsoon season on the basis of links with equatorial Pacific and Indian Ocean climate indices](#)

Sajani Surendran, Sulochana Gadgil, P A Francis et al.

[Impact of river runoff into the ocean on Indian summer monsoon](#)

P N Vinayachandran, S Jahfer and R S Nanjundiah

[The impact of monsoon intraseasonal variability on renewable power generation in India](#)

C M Dunning, A G Turner and D J Brayshaw

[Roles of interbasin frequency changes in the poleward shifts of the maximum intensity location of tropical cyclones](#)

Il-Ju Moon, Sung-Hun Kim, Phil Klotzbach et al.

[Amplified subtropical stationary waves in boreal summer and their implications for regional water extremes](#)

Jiacan Yuan, Wenhong Li and Yi Deng

[Multi-decadal modulation of the El Niño–Indian monsoon relationship by Indian Ocean variability](#)

Caroline C Ummenhofer, Alexander Sen Gupta, Yue Li et al.

## Environmental Research Letters



## LETTER

## On the decreasing trend of the number of monsoon depressions in the Bay of Bengal

## OPEN ACCESS

## RECEIVED

29 September 2015

## REVISED

5 January 2016

## ACCEPTED FOR PUBLICATION

6 January 2016

## PUBLISHED

27 January 2016

Original content from this work may be used under the terms of the [Creative Commons Attribution 3.0 licence](#).

Any further distribution of this work must maintain attribution to the author(s) and the title of the work, journal citation and DOI.

S Vishnu<sup>1</sup>, P A Francis<sup>1</sup>, S S C Shenoi<sup>1</sup> and S S V S Ramakrishna<sup>2</sup><sup>1</sup> Indian National Centre for Ocean Information Services, Ministry of Earth Science, Government of India, Hyderabad, India<sup>2</sup> Department of Meteorology and Oceanography, Andhra University, Visakhapatnam, IndiaE-mail: [vishnunair.s@incois.gov.in](mailto:vishnunair.s@incois.gov.in)**Keywords:** monsoon depression, genesis potential index, moisture budget, global warming, Bay of Bengal, monsoonSupplementary material for this article is available [online](#)**Abstract**

This study unravels the physical link between the weakening of the monsoon circulation and the decreasing trend in the frequency of monsoon depressions over the Bay of Bengal. Based on the analysis of the terms of Genesis Potential Index, an empirical index to quantify the relative contribution of large scale environmental variables responsible for the modulation of storms, it is shown here that the reduction in the mid-tropospheric relative humidity is the most important reason for the decrease in the number of monsoon depressions. The net reduction of relative humidity over the Bay of Bengal is primarily due to the decrease in the moisture flux convergence, which is attributed to the weakening of the low level jet, a characteristic feature of monsoon circulation. Further, the anomalous moisture convergence over the western equatorial Indian Ocean associated with the rapid warming of the sea surface, reduces the moisture advection into the Bay of Bengal and hence adversely affect the genesis/intensification of monsoon depressions. Hence, the reduction in the number of monsoon depression over the Bay of Bengal could be one of the manifestations of the differential rates in the observed warming trend of the Indian Ocean basin.

**1. Introduction**

India receives 70–90 percent of the annual rainfall during the four months of the summer monsoon season alone. Being a country having a large fraction of agriculture depend on the seasonal rains, variation in the monsoon rainfall affects the lives of billions of people and influence the economy of the country considerably (Gadgil and Gadgil 2006). There have been several studies on the interannual variation of the Indian summer monsoon (June–September) rainfall (ISMR), suggesting that there are teleconnections between the variation of ISMR and ocean-atmospheric processes happening elsewhere such as Pacific Ocean, Atlantic Ocean and Indian Ocean (Sikka 1980, Pant and Parthasarathy 1981, Gadgil *et al* 2004, Pottapinjara *et al* 2014, and references therein), and the nature of the links and the physical mechanisms of their interactions are still being explored. Similarly, the presence of long term trends in ISMR are also being

debated extensively (Wang *et al* 2013, Kitoh *et al* 2013, Guhathakurta and Rajeevan 2008, Goswami *et al* 2006). Differences in the conclusions are primarily due to the differences in the data sets used for these studies as pointed out by Wang *et al* (2013) as well as the analysis techniques. For example Guhathakurta and Rajeevan (2008) showed that even though there are no long term trends in the ISMR, there is a significant decreasing (increasing) trend in three (eight) meteorological subdivisions. Goswami *et al* (2006) argued that even though seasonal rainfall does not show any significant long term trend, the number of extreme (moderate) rainfall events within the season shows an increasing (decreasing) trend. In a recent study, using long term gridded rainfall data, Roxy *et al* (2015) reported that there is a significant decreasing trend in the rainfall over the central-eastern Indian region. They argued that this long term decreasing trend is primarily associated with the westward spread of the Indian Ocean warm pool. The

mechanism of this association put forth by them points to the reduced land-ocean thermal contrast and excessive atmospheric convergence to the western equatorial Indian Ocean which is responsible for the weakening of the monsoon circulation.

It is well known that the Indian summer monsoon is maintained by northward progression of the inter tropical convergence zone (ITCZ Sikka and Gadgil 1980) and the synoptic scale disturbances, commonly known as monsoon depressions (MDs), which generally form over the Bay of Bengal (BoB) or cross over to the BoB from south-China sea and propagate westward/northwestward to the mainland (Ding and Sikka 2006). It is not uncommon that MDs move north-westward along the monsoon trough and reach as far as northwestern India/Pakistan and produce large rainfall totals (some times up to 300–400 mm) along its track (Sikka 1977). As far as agriculture is concerned, MDs are very important, especially in central India as it could act as a main source of moisture (Sivakumar *et al* 2005). Some studies have reported a decreasing trend in the observed frequency of MDs in the recent decades (Patwardhan and Bhalme 2001, Kumar and Dash 2001, Mandke and Bhide 2003), while some other studies noted that along with the decreasing trend in MDs there is an increasing trend in the number of low pressure systems (Rajeevan *et al* 2000, Kumar and Dash 2001, Jadhav and Munot 2009). Nevertheless, understanding the reasons behind the decreasing trend in MDs is one of the most important science questions to be addressed.

High sea surface temperature (SST), presence of low level (850 hPa) cyclonic vorticity over the BoB, high mid-tropospheric humidity and weak vertical wind shear are considered to be the essential environmental conditions for the formation and intensification of MD (Sikka 1977). Interestingly, these are the same essential criteria for the genesis of tropical cyclones as suggested by Gray (1968). However, it may be noted that the vertical wind shear is very strong particularly over the Arabian Sea and the BoB during the monsoon season. This is a major factor that limits the synoptic scale disturbances from intensifying into tropical cyclones during this season, while in all other basins in the Northern Hemisphere, cyclone activity peaks in July–August (Gray 1968, 1979, Sikka 1977; and references therein). Recent studies of Rao *et al* (2004) and Rao *et al* (2008) suggested that the variation in the strength of upper tropospheric wind could modulate the frequency and intensity of the storms over northern Indian Ocean. It may be worth to note that the decadal variability of low-level vorticity and vertical and horizontal wind shear of zonal wind are in the unfavorable phase for the genesis and intensification of storms over the BoB after 1980 (Mandke and Bhide 2003). Rajeevan *et al* (2000) reported that SST in the BoB and frequency of MD had shown similar decadal variations till early 1980s, however the MD have been decreasing in spite of increasing SST since mid-

1980s. Prajeesh *et al* (2013) suggested that the decreasing trend in the frequency of occurrence of MD could be associated with the declining trend in mid-tropospheric relative humidity.

Roxy *et al* (2015) observed that the decreasing trend in the rainfall activity over the central-eastern India is intriguing as this is the region which receives substantial amount of rainfall due to MDs/low pressure systems. This motivated us to explore whether there is any link between the decreasing trend in MDs and rainfall over the central-eastern Indian region and if so, whether the latter is also influenced by the changes in the monsoonal circulation as suggested by Roxy *et al* (2015). In fact, some of the studies on the long term variation of MD indicate that the changes in the 'large scale environmental parameters' are responsible for the decreasing trend in the frequency of MD over the BoB, which could be related to the changes in the circulation that Roxy *et al* (2015) refer to. Hence, in this paper, we try to address the links between the trends in the monsoon rainfall in India and the frequency of MD and derive the quantitative estimates of the relative contributions of each of the environmental variables responsible for the long term variation in the number of MD.

The Genesis potential index (GPI) formulated by Emanuel and Nolan (2004) is a useful tool to quantitatively describe the influence of large-scale environmental factors on the genesis of the tropical cyclones. GPI has been successfully used to analyze the seasonal, intra-seasonal and inter-annual modulation of tropical storm activity in various tropical basins (Camargo *et al* 2007, Camargo *et al* 2009, Yanase *et al* 2012, Li *et al* 2013, Girishkumar *et al* 2014). Given the fact that the environmental conditions responsible for the organization of the low pressure systems to depressions and cyclones are same (Sikka 1977), it is possible to use the GPI for estimating the relative contributions of different environmental conditions in the formation and development of MD.

## 2. Data and methodology

### 2.1. Data

The information on the number of days in which MD were present over the BoB or the Indian subcontinent is taken from the website of India Meteorological Department (IMD) (<http://www.rmccennaieatlas.tn.nic.in>). Daily high resolution ( $0.25^\circ \times 0.25^\circ$ ) gridded rainfall data (Pai *et al* 2014) for the period 1901–2010 is also used in this study. Monthly mean profiles of atmospheric temperature, horizontal wind, specific humidity, relative humidity, precipitation and evaporation (derived from latent heat flux) from National Centre for Environmental Prediction (NCEP) Reanalysis (Kalnay *et al* 1996) and monthly mean SST from the Hadley Centre Global Sea Ice and Sea Surface Temperature version2 (HadISST2)

(Rayner *et al* 2003) are used for the computation of GPI and moisture budget.

## 2.2. Methodology

### 2.2.1. Genesis potential index

Following Emanuel and Nolan (2004) and Li *et al* (2013), we have used the following expression in order to understand the relative contributions of the changes in individual environmental conditions in the changes of frequency of MDs

$$\delta \text{GPI} = \alpha 1 \times \delta \left( \frac{H}{50} \right)^3 + \alpha 2 \times \delta |10^5 \eta|^2 + \alpha 3 \times \delta (1 + 0.1 V_{\text{shear}})^{-2} + \alpha 4 \times \delta \left( \frac{V_{\text{pot}}}{70} \right)^3 \quad (1)$$

where

$$\begin{aligned} \alpha 1 &= \overline{|10^5 \eta|^2}^3 \times \overline{(1 + 0.1 V_{\text{shear}})^{-2}} \times \overline{\left( \frac{V_{\text{pot}}}{70} \right)^3}, \\ \alpha 2 &= \overline{\left( \frac{H}{50} \right)^3} \times \overline{(1 + 0.1 V_{\text{shear}})^{-2}} \times \overline{\left( \frac{V_{\text{pot}}}{70} \right)^3}, \\ \alpha 3 &= \overline{\left( \frac{H}{50} \right)^3} \times \overline{|10^5 \eta|^2}^3 \times \overline{\left( \frac{V_{\text{pot}}}{70} \right)^3}, \\ \text{and} \\ \alpha 4 &= \overline{\left( \frac{H}{50} \right)^3} \times \overline{|10^5 \eta|^2}^3 \times \overline{(1 + 0.1 V_{\text{shear}})^{-2}}, \end{aligned}$$

where  $H$  is the relative humidity (%) at 600 hPa, is  $\eta$  the absolute vorticity at 850 hPa ( $\text{s}^{-1}$ ),  $V_{\text{shear}}$  is the magnitude of the vertical wind shear ( $\text{ms}^{-1}$ ) between 850 hPa and 200 hPa, and  $V_{\text{pot}}$  is the maximum tropical cyclone potential intensity (PI) ( $\text{ms}^{-1}$ ) defined by Emanuel (1986, 1995, 1999) and modified by Bister and Emanuel (1998, 2002) to take into account of dissipative heating. The bar indicates seasonal (June–September) climatology and  $\delta$  represents the difference between recent epoch (1981–2010) and earlier (1951–1980) epoch of individual parameter. As the GPI has a good skill in representing the parameters affecting the genesis potential of MDs over the BoB, as seen in the supplementary material, we use it for this study to address the changes in such environmental factors that affected the frequency in the occurrence of MDs over the BoB.

### 2.2.2. Moisture budget

Applying mass continuity equation and vertical integration to the water vapor budget proposed by Yanai *et al* (1973), Zangvil *et al* (2004) represented the traditional atmospheric moisture budget equation (MBE) as

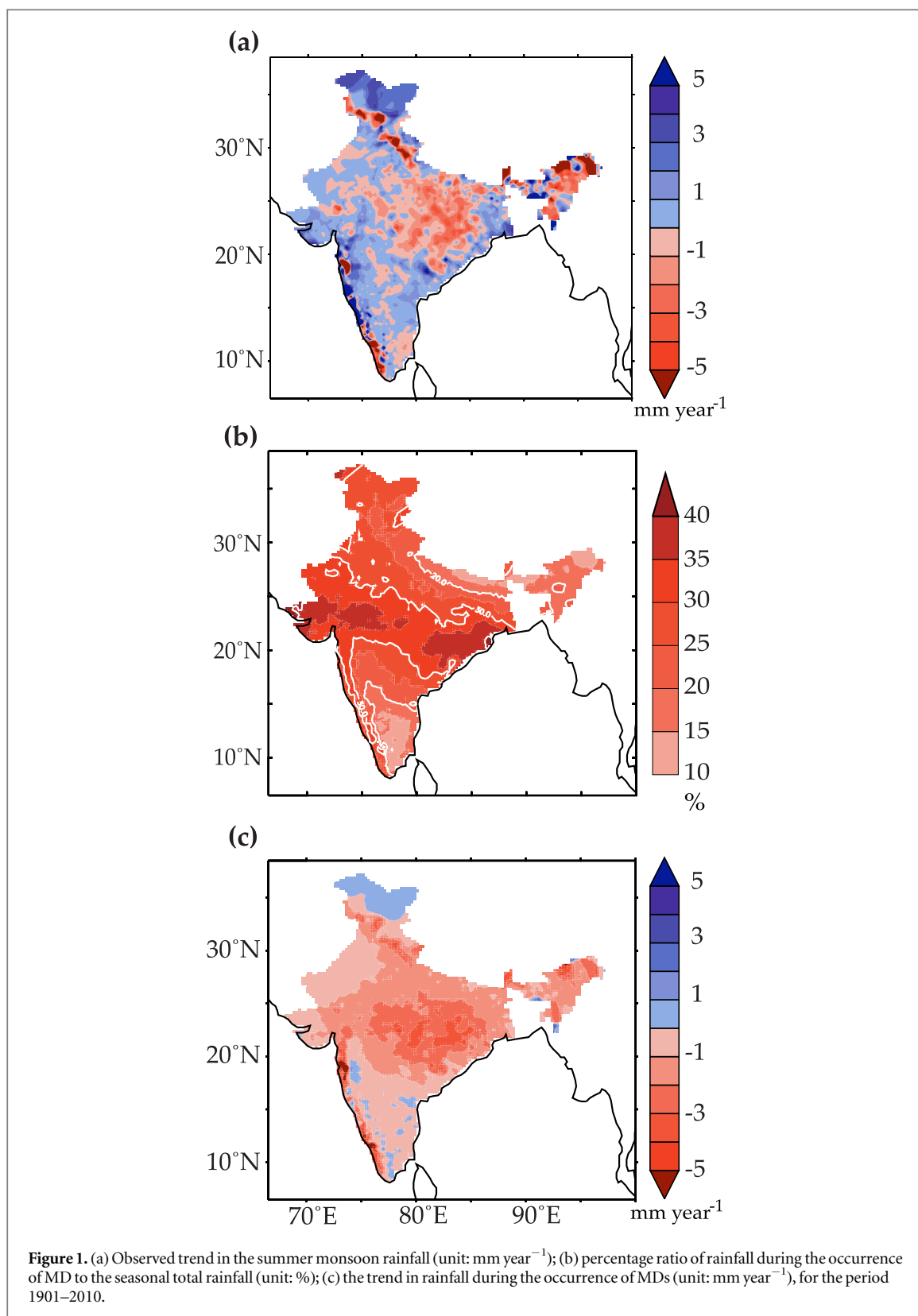
$$\begin{aligned} \frac{1}{g} \frac{\partial}{\partial t} \int_S^T q dp + \frac{1}{g} \int_S^T \vec{V} \cdot \nabla q dp \\ + \frac{1}{g} \int_S^T q \nabla \cdot \vec{V} dp = E - P \end{aligned} \quad (2)$$

where,  $g$  is the acceleration due to gravity,  $S$  and  $T$  represents the surface and top level of atmosphere, and

$E$  and  $P$  are the surface evaporation and precipitation rate, respectively. The first term in the left hand side of the equation (2) is the time change of atmospheric precipitable water, often called also ‘storage term’, which is negligible for large scale analysis (Jin *et al* 2011). The second and third terms are the horizontal water vapor advection and horizontal velocity divergence. The sum of second and third term is named as moisture flux divergence. Compared to the previous studies, moisture budget calculated by NCEP data shows appreciable match between left-hand side and right-hand side of MBE over the BoB (figure S4 in supplementary material).

## 3. Results and discussions

Long term variation (1901–2010) of the monsoon rainfall over the Indian region shows decreasing trends in most parts of the country, with significant decrease observed in the central-eastern parts of the mainland as seen in figure 1(a). Recently, Roxy *et al* (2015) also had reported this decreasing trend in all India rainfall. In the Indian subcontinent, particularly in the core monsoon zone above which the monsoon trough lies, a large fraction of seasonal rainfall occur during the passage of MD. The ratio of rainfall in this region during the occurrence of MD to the seasonal mean rainfall varies in the range of 35–45%, which is quite substantial (figure 1(b)). It may be noted that even the west coast of India receives significant amount of rainfall during the occurrence of MD over the BoB. This is not surprising as it is well known that the orographic rainfall over the west coast of India has links to the large-scale convection over the BoB (Srinivasan and Nanjundiah 2002 Francis and Gadgil 2006). In this context, it is important to investigate whether the decrease in the rainfall over parts of the country has links to the decrease in the number of MDs. Figure 1(c) shows the spatial distribution of the long term trend in total rainfall received in association with MD in a given season. The rainfall of any day on which a MD is present over the BoB or the Indian subcontinent during summer monsoon season is considered as ‘rain associated with MD’. It is interesting to note that the rainfall associated with MD shows a significant negative trend over the core monsoon region, particularly over the central-eastern India and the west coast of India. However, the rainfall in non-MD days has shown no significant trend except a prominent positive trend over the west coast of peninsular India (figure not shown). Essentially the decrease in rainfall is associated with a decrease in rainy days associated with the MDs, which could be either due to a decrease in the number of such systems or a reduction in their life span. Hence it is appropriate to assess the long term trend in number of MD days (days in which MDs were present) rather than the actual number of such systems. Figure 2(a) depicts the variation of number of MD days, which shows a clear

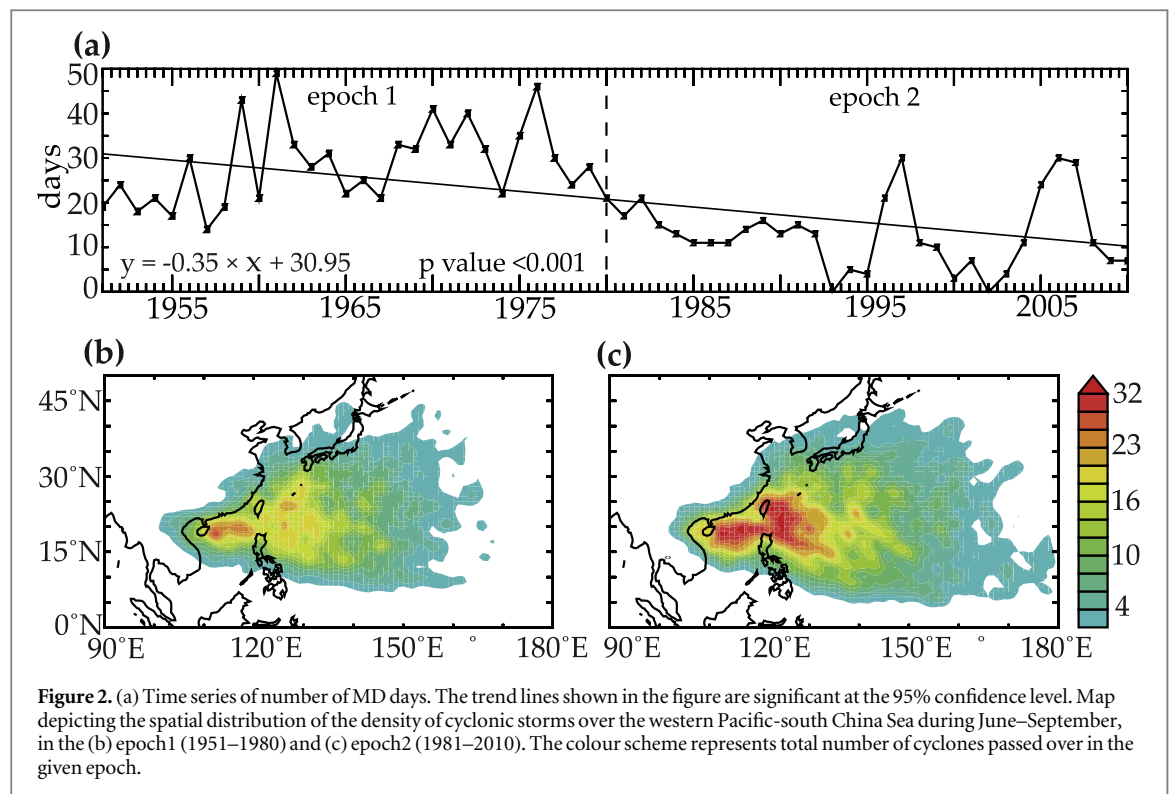


reduction in the number of such days after 1980. However, it may be noted that this decrease is essentially due to decrease in the number of MDs rather than changes in the life span of the systems (figure S1 in supplementary material).

Many studies reported that the majority of MDs over the BoB are attributed to re-gensis of westward-

propagating residual lows of tropical storms, or of other tropical disturbances from western Pacific–South China Sea (WTP–SCS) region (Koteswaram and Bhaskara Rao 1963, Ramanna 1969, Mooley and Shukla 1989, Krishnamurti *et al* 1977). It is interesting to note that the number of MDs over the BoB has shown a decreasing trend even though more cyclonic





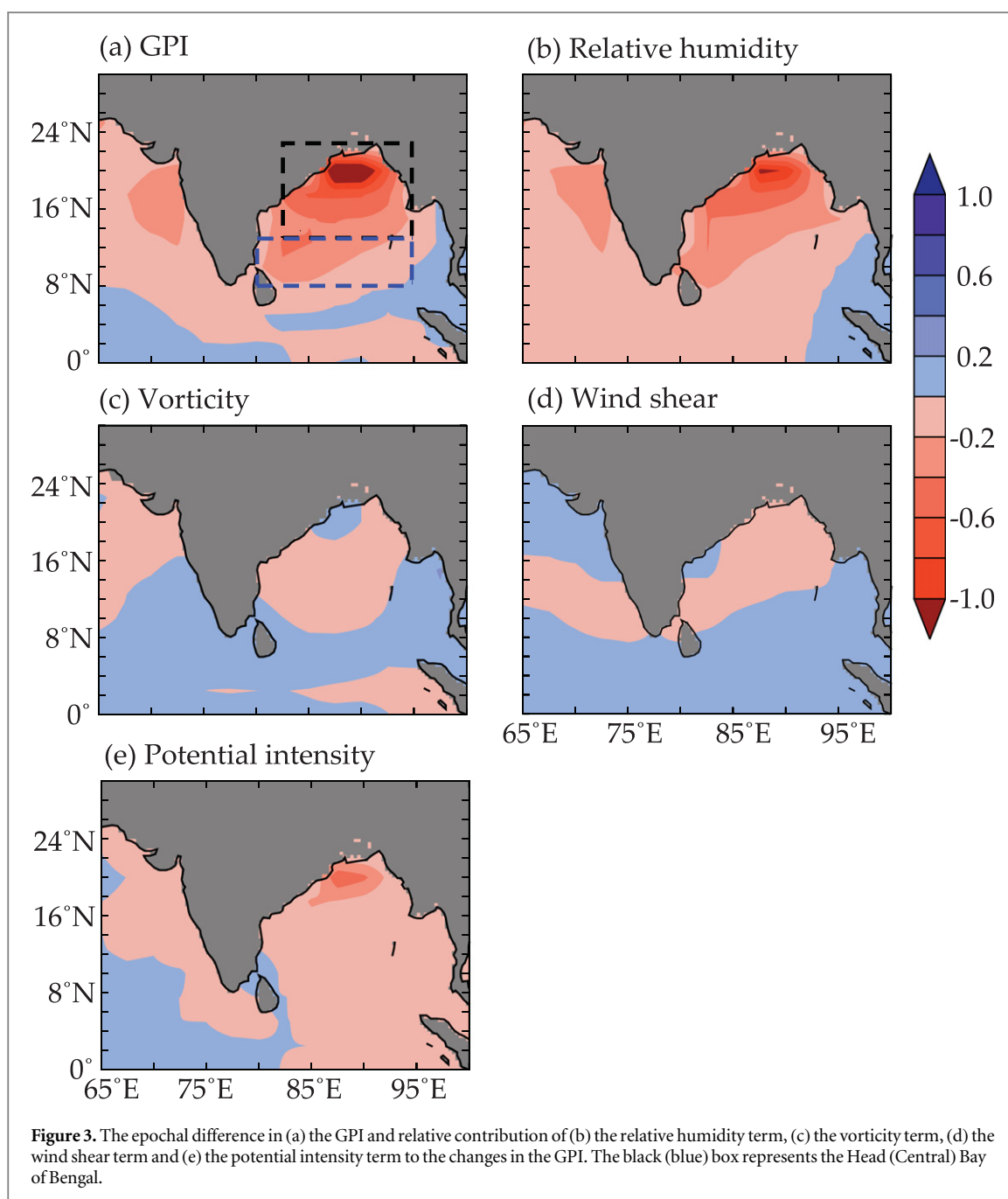
storms move westward from the WTP-SCS after 1980 compared to the earlier epoch (figures 2(b) and (c)). This suggests that either these systems are not reintensifying after they cross over to the BoB or there is considerable decrease in the number of MDs forming within the BoB basin. An important question which arises from these observations is essentially what changes in the environmental parameters which are responsible for the development and intensification of a MD have occurred in the recent epoch (1981–2010, epoch 2) compared to the previous one (1951–1980, epoch 1). In order to address this question, next we analyse the changes in each of the terms in the GPI equation.

### 3.1. Variation in the environmental factors responsible for the formation of MDs

The difference in the GPI between epoch 2 and epoch 1 clearly shows a decrease in the genesis potential over the head BoB (figure 3(a)) in epoch 2. The maximum epochal difference is about 1 (note that, GPI is a dimensionless quantity) where the climatological GPI is about 4.5 (which means that the reduction in GPI is approximately 22% of its mean value). A clear reduction in the GPI is observed in association with the decreasing trend in the frequency MDs (table 1). To assess the relative contribution of large-scale environmental parameters on the reduction in MD activity in different epochs, each of the terms in equation (1) is examined (figure 3) separately. Relative contributions (in percentage ratio) of the terms in the right-hand side of equation (1) to the reduction of GPI averaged over

the head BoB and central BoB are also presented in table 2. It may be noted that the key process responsible for the reduction in the GPI in the epoch 2 is the decrease in the mid-tropospheric relative humidity (figure 3(b)). The relative humidity term contributes around 62% and 72% of the total GPI reduction over the head BoB and the central BoB respectively (table 2). This is consistent with the results of Prajeesh *et al* (2013) which showed that the weakening trend in the mid-tropospheric relative humidity is a major factor in reducing the MD frequency. The strong spatial correspondence between the relative humidity term and net change in GPI ( $\delta$ GPI) clearly demonstrates the dominant contribution of mid-tropospheric relative humidity on the observed decrease in number of MDs.

The potential intensity term plays a secondary role in the decrease of GPI during epoch 2 (figure 3(e)). It contributes around 21% (25%) over the head BoB (central BoB) of the total GPI decrease. The vorticity term has a relatively lesser contribution to the reduction of GPI over the BoB during summer monsoon season (around 9% over the head BoB and 6% in the central BoB). It is interesting to note that the wind shear term has a positive (8%) contribution to the reduction of the GPI over the head BoB, while its contribution is almost negligible and negative (−3%) over the central BoB. We found that the GPI analysis using ERA-20C reanalysis data also yields similar results over the head BoB (figure S3 and table S1 in supplementary material). As it is clear that the decrease in the availability of the mid-tropospheric relative humidity plays the most important role in the



**Figure 3.** The epochal difference in (a) the GPI and relative contribution of (b) the relative humidity term, (c) the vorticity term, (d) the wind shear term and (e) the potential intensity term to the changes in the GPI. The black (blue) box represents the Head (Central) Bay of Bengal.

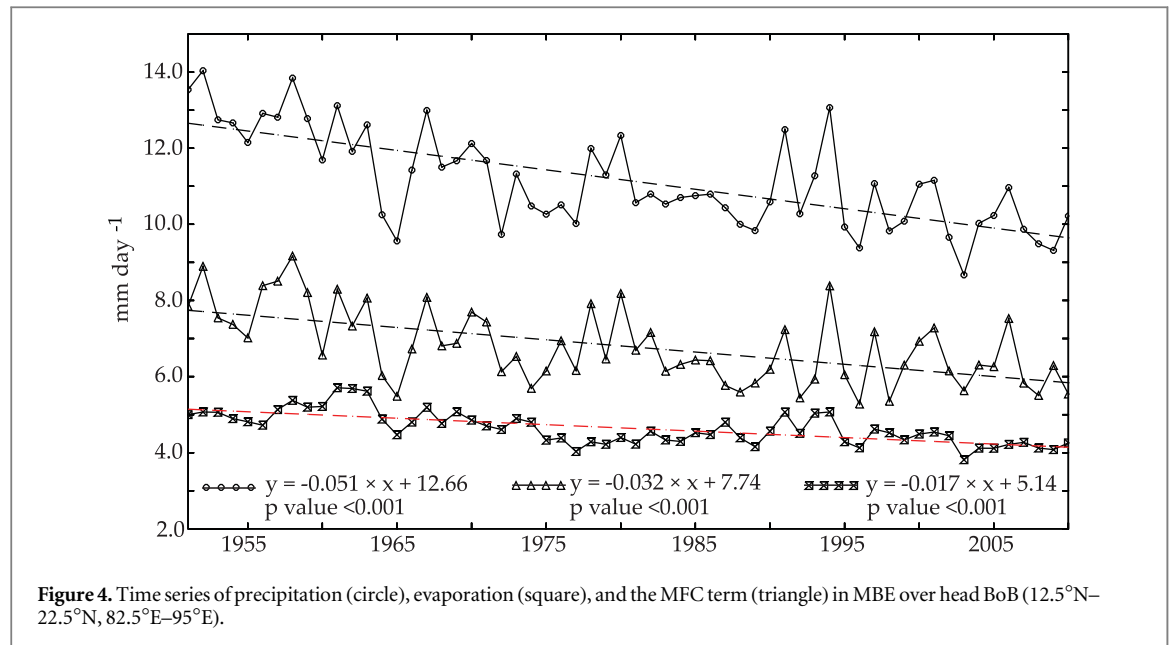
**Table 1.** Decadal mean frequency of monsoon depression (MD; wind speed 17–33 kt), cyclone (CS; wind speed 34–47 kt) and severe cyclone (SCS; wind speed 48–63 kt) formed in the BoB along with the mean GPI.

Decades	Frequency of formation of			GPI
	MD	CS	SCS	
1951–1960	5.90	0.80	0.10	1.88
1961–1970	5.50	0.70	0.10	1.41
1971–1980	4.70	1.10	0.70	1.51
1981–1990	3.00	0.70	0.20	1.08
1991–2000	2.00	0.30	0.00	1.06
2001–2010	2.50	0.60	0.10	1.14

**Table 2.** Seasonal estimate of relative contributions of the terms (in %), averaged over the head BoB (12.5°N–22.5°N, 82.5°E–95°E) and the central BoB (7.5°N–12.5°N, 80°E–95°E), on the right-hand side of equation (1) to the epochal difference in the GPI ( $\delta$ GPI) between recent (1981–2010) and earlier epoch (1951–1980).

GPI terms	Head BOB	Central BoB
Relative humidity	62.48	72.40
Vorticity	9.32	5.90
Wind shear	7.75	–2.89
Potential intensity	20.73	24.53

decreasing trend of MD, it is important to understand whether this reduction of relative humidity is due to changes in local evaporation or due to the changes in



the advection of moisture into the BoB. In order to answer this question, next we assess the relative roles of local and remote effects in the moisture budget over the BoB.

### 3.2. Moisture budget estimates

Moisture availability in a given atmospheric column is determined by the moisture advected and the local evaporation. The interannual variation of the seasonal moisture budget estimates over the head BoB (12.5°N–22.5°N, 82.5°E–95°E, where majority of the MD form) is depicted in figure 4. The contribution of moisture flux convergence (MFC), which is the negative of the moisture flux divergence in the MBE ( $\sim 6.79 \text{ mm day}^{-1}$ ), to the net moisture content is significantly higher compared to the local evaporation ( $\sim 4.64 \text{ mm day}^{-1}$ ) over the head BoB. Being a region with excess of precipitation compared to the local evaporation during the summer monsoon season (figure S5 in supplementary material), it is not surprising that there is substantial moisture convergence to the head BoB. It may be seen that both the local evaporation and MFC are decreasing at rates of  $0.017 \text{ mm day}^{-1} \text{ year}^{-1}$  and  $0.032 \text{ mm day}^{-1} \text{ year}^{-1}$  respectively over the head BoB (figure 4). The percentage contribution of the MFC term is higher (65%) than local evaporation (35%) to the decreasing trend in the total moisture flux also.

The decrease in the MFC should be either due to the decrease in the moisture advected into the region or due to the increase in the moisture advected out of the region or a combination of the both. Following Zangvil *et al* (2004), we quantitatively estimated the outflow and the inflow of the moisture of the head BoB

by modifying the MFD term in the MBE (equation (2)) as  $\frac{OF}{A} - \frac{IF}{A}$  where as  $OF$ ,  $IF$  and  $A$  represent the outflow, inflow and the surface area respectively. The estimates show that both the total inflow (TIF) and total outflow (TOF) over the head BoB are decreasing, with TIF decreasing at a higher rate ( $0.10 \text{ mm day}^{-1} \text{ year}^{-1}$ ;  $p \text{ value} < 0.001$ ) than the TOF ( $0.04 \text{ mm day}^{-1} \text{ year}^{-1}$ ;  $p \text{ value} 0.005$ ) during the period 1951–2010. This suggests that the decrease of moisture advected into the head BoB is the major factor for the declining moisture over BoB.

All the terms of the MBE and the related parameters for the earlier (1951–1980) epoch and the recent epoch (1981–2010) and their differences are shown in table 3. In the recent epoch, all terms in the MBE show lower values compared to the earlier epoch. The advection terms (TIF and TOF) have higher epochal difference ( $-2.3 \text{ mm day}^{-1}$  and  $-1.15 \text{ mm day}^{-1}$ ) compared to evaporation ( $-0.46 \text{ mm day}^{-1}$ ). In addition, the recycling ratio, the ratio of local evaporation to the total inflow, does not show any significant change (remains  $\sim 0.15$ ) for both epochs. This indicates that even though the net moisture content over the head BoB is decreasing, the percentage contribution of local evaporation and the TIF to the net moisture content remains same in both epochs. As the local evaporation contribute only 15% to the net moisture content, the variation in the TIF is the major factor for the increasing trend of dryness over the head BoB.

For the detailed investigation of TIF and TOF, we calculated the inflow and the outflow of moisture through all the boundaries of study area (head BoB; 12.5°N–22.5°N, 82.5°E–95°E). The inward moisture



**Table 3.** Moisture budget components calculated over the head BoB (12.5°N–22.5°N, 82.5°E–95°E) during recent (1951–1980) and earlier (1981–2010) epoch and their differences.

		1951–1980 (earlier)	1981–2010 (recent)	Difference (recent– earlier)
West	Inflow	15.240	14.280	–0.960
	Outflow	0.046	0.011	–0.035
East	Inflow	0.004	0.000	–0.004
	Outflow	12.230	10.810	–1.420
South	Inflow	12.010	10.350	–1.660
	Outflow	0.000	0.000	0.000
North	Inflow	0.413	0.745	0.332
	Outflow	7.388	7.690	0.302
Total Inflow (TIF)		27.670	25.370	–2.300
Total Outflow (TOF)		19.670	18.520	–1.150
TIF–TOF		8.001	6.854	–1.147
Avg Precipitation (P)		11.960	10.490	–1.470
Avg Evaporation (E)		4.879	4.418	–0.461
P–E		7.076	6.076	–1.000
Recycling ratio (R)		0.151	0.150	–0.001

transport over the head BoB is mostly through western (14.74 mm day<sup>–1</sup>) and southern boundaries (11.18 mm day<sup>–1</sup>), while the outward moisture transport is mainly through eastern (11.52 mm day<sup>–1</sup>) and northern (5.54 mm day<sup>–1</sup>) boundaries of the head BoB. The epochal difference shows a decrease in the moisture inflow through both western (0.96 mm day<sup>–1</sup>) and southern (1.66 mm day<sup>–1</sup>) boundaries (table 3). The moisture outflow through the eastern boundary also decreased in recent epoch (1.42 mm day<sup>–1</sup>), while the outflow through the northern boundary increased (0.30 mm day<sup>–1</sup>) (table 3). The decrease in the inflow of moisture through southern and western boundaries and increase in the outflow through northern boundary cause the observed decrease in the moisture content over the head BoB.

Interestingly, the epochal difference in vertically integrated moisture transport (VIMT) shows a decreasing trend into the head BoB (figure 5(a)). It may be noted that the changes in the lower level (700 hPa to 1000 hPa) moisture transport play a key role in the decreasing trend of VIMT. The epochal change in horizontal wind at 850 hPa, where the core of the low level jet (LLJ) present (Findlater 1969, Joseph and Raman 1966) and VIMT show strong spatial correspondence (figure 5(a) and (b)). The VIMT and LLJ have decreased in the recent epoch over the eastern Arabian Sea, the head BoB, and land over the east Asia, while it has increased over the northwest Pacific. Further, cross equatorial flow of moisture transport and the LLJ has weakened over the western Indian Ocean and strengthened over the western Pacific region. The strong spatial correspondence in the epochal changes in the LLJ and VIMT suggest that the weakening of LLJ is associated with the declining trend of moisture over the head BoB.

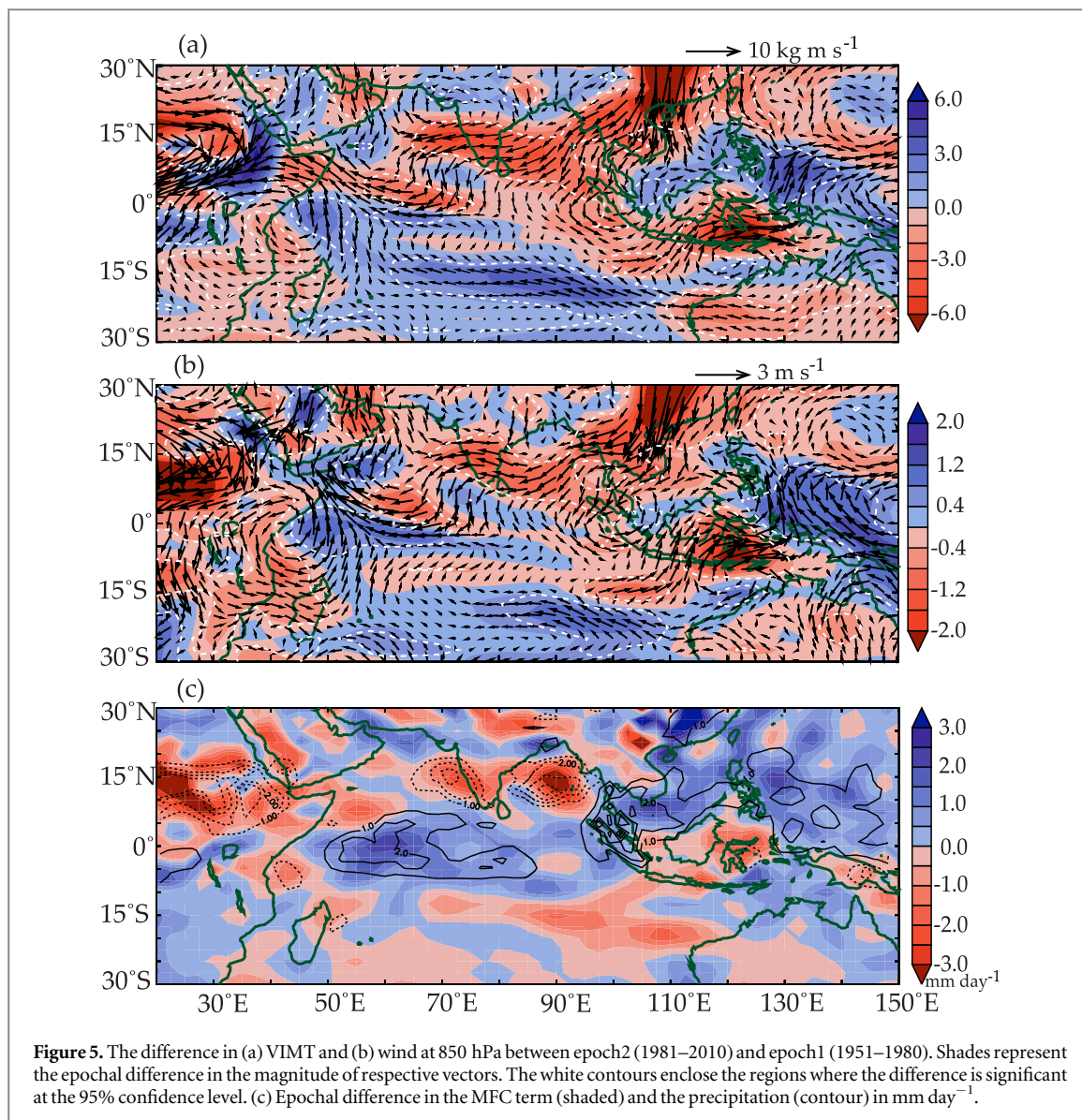
Anomalous convergence of VIMT seen over western equatorial Indian Ocean, leads to relatively higher accumulation of moisture over this region. It may be interesting to note that there is an increase in the rainfall over the western equatorial Indian Ocean in the recent epoch associated with an increased MFC (figure 5(c)). Hence, the observed weakening of the LLJ (which represents the strength of monsoon circulation Joseph and Simon 2005) in the recent decades might have reduced the moisture transport to the BoB, which can lead to a decrease in the moisture content over the BoB and hence cause reduction in the formation/intensification of MD.

#### 4. Summary and conclusions

Rainfall over the central-eastern parts of India during the summer monsoon season is showing a decreasing trend (1.49 mm year<sup>–1</sup>) in the recent years. In this paper we showed that this decreasing trend in rainfall is associated with the decreasing trend in the number of MD days (0.15 year<sup>–1</sup>). We also showed that the reduction in the mid-tropospheric humidity is mainly responsible for the decrease in MD days. A moisture budget analysis suggested that compared to the changes in local evaporation, decrease in the moisture flux convergence (negative of moisture flux divergence) contributes significantly to the observed dryness over BoB in the recent years. It is also found that the observed weakening of moisture advection into the BoB has strong spatial correspondence with the variation in the intensity of the low level jet. Interestingly, there is an anomalous increase in the moisture convergence flux over the western equatorial Indian Ocean and enhanced precipitation over this region. The observed rapid warming of the western equatorial Indian Ocean could be reducing the meridional tropospheric temperature gradient, which leads to the weakening of summer monsoon circulation as suggested by Roxy *et al* (2015).

A study by Nieves *et al* (2015) reported that the observed decrease in the sea surface temperature in the Pacific Ocean during recent years is compensated by warming in subsurface of the Pacific Ocean and the Indian Ocean. Apart from this, the western equatorial Indian Ocean warming could be also associated with the asymmetry of ENSO teleconnection; El Niño events induce warming in Indian Ocean through Walker circulation and La Niña events failed to do the reverse (Roxy *et al* 2014). Further, increase in magnitude and frequency of El-niño events in recent decades may accelerate this warming (Roxy *et al* 2014).

Many studies using sensitivity experiments based on the numerical models have shown that the changes in the land-sea thermal contrast can modulate the monsoon circulation in the global warming scenario (Chou 2003, Wu *et al* 2012, Kamae *et al* 2014, Ma and Yu 2014). Increase in the aerosol concentration can enhance land surface cooling in the southern Asia



which could adversely affect the land-sea thermal contrast and hence weaken the monsoon circulation (Meehl *et al* 2008, Bollasina *et al* 2011, Dong *et al* 2014, Lau and Kim 2010, Sanap *et al* 2015). This might affect the transport of moisture into the BoB, which has a pivotal role in the genesis/intensification of monsoon depressions. Dong and Zhou (2014) used coupled climate model experiments to show that the long term changes in the surface latent heat and longwave fluxes favour basin wide warming of the Indian Ocean and the warming in the western Indian Ocean is particularly stronger to produce an equatorial dipole structure. Roxy *et al* (2015) also showed that the western equatorial Indian Ocean warming results in the weakening of monsoon circulation as seen as the weakening of Hadley circulation in the observation and model simulations. They suggested that the response of the Indian ocean to the global warming could lead to anomalous moisture convergence over the western equatorial Indian Ocean which could dampen the monsoon circulation. This observation is consistent

with our findings in this paper that the primary cause for the decrease in the number of MDs over the BoB is the reduction of moisture advected to the head BoB due to decrease in the strength of the low level jet. Hence, the decreasing trend in the number of MDs could be one of the manifestations of the response of Indian monsoon to the global warming.

### Acknowledgments

S Vishnu is grateful to ESSO-INCOIS, Ministry of Earth Sciences (MoES) and Dept. of Meteorology and Oceanography, Andhra University for providing the necessary facilities and to University Grants Commission (UGC) for funding to pursue this work. Prof Sulochana Gadgil is acknowledged for very useful discussions. We would also like to acknowledge the three anonymous reviewers, whose comments and suggestions greatly improved the final manuscript. This is ESSO-INCOIS publication 238.

## References

- Bister M and Emanuel K A 1998 Dissipative heating and hurricane intensity *Meteor. Atmos. Phys.* **55** 233–40
- Bister M and Emanuel K A 2002 Low frequency variability of tropical cyclone potential intensity 1. Interannual to interdecadal variability *J. Geophys. Res.* **107** 4801
- Bollasina M A, Ming Y and Ramaswamy V 2011 Anthropogenic aerosols and the weakening of the South Asian summer monsoon *Science* **334** 502–5
- Camargo S J, Emanuel K A and Sobel A H 2007 Use of a genesis potential index to diagnose ENSO effects on tropical cyclone genesis *J. Clim.* **20** 4819–34
- Camargo S J, Wheeler M C and Sobel A H 2009 Diagnosis of the MJO modulation of tropical cyclogenesis using an empirical index *J. Atmos. Sci.* **66** 3061–74
- Chou C 2003 Land–sea heating contrast in an idealized Asian summer monsoon *Clim. Dyn.* **21** 11–25
- Ding Y and Sikka D R 2006 *Synoptic Systems and Weather The Asian Monsoon* (Berlin: Springer) pp 131–201
- Dong L, Zhou T and Wu B 2014 Indian ocean warming during 1958–2004 simulated by a climate system model and its mechanism *Clim. Dyn.* **42** 203–17
- Dong L and Zhou T 2014 The Indian Ocean sea surface temperature warming simulated by CMIP5 models during the twentieth century: competing forcing roles of GHGs and anthropogenic aerosols *J. Clim.* **27** 3348–62
- Emanuel K A 1986 An air–sea interaction theory for tropical cyclones: I. Steady-state maintenance *J. Atmos. Sci.* **43** 585–605
- Emanuel K A 1995 Sensitivity of tropical cyclones to surface exchange coefficients and a revised steady-state model incorporating eye dynamics *J. Atmos. Sci.* **52** 3969–76
- Emanuel K A 1999 Thermodynamic control of hurricane intensity *Nature* **401** 665–9
- Emanuel K A and Nolan D S 2004 Tropical cyclone activity and global climate Preprints *26th Conf. on Hurricanes and Tropical Meteorology* (Miami, FL: Am. Meteorol. Soc.) pp 240–1
- Findlater J 1969 A major low-level air current near the Indian Ocean during the northern summer *Q. J. R. Meteorol. Soc.* **95** 362–80
- Francis P A and Gadgil S 2006 Intense rainfall events over the west coast of India *Meteor. Atmos. Phys.* **94** 27–42
- Gadgil S and Gadgil S 2006 The Indian monsoon, GDP and agriculture *Econ. Pol. Wkly* 4887–95
- Gadgil S, Vinayachandran P N, Francis P A and Gadgil S 2004 Extremes of the Indian summer monsoon rainfall, ENSO and equatorial Indian Ocean oscillation *Geophys. Res. Lett.* **31** L12213
- Girishkumar M S, Suprit K, Vishnu S, Thanga Prakash V P and Ravichandran M 2014 The role of ENSO and MJO on rapid intensification of tropical cyclones in the Bay of Bengal during October–December *Theo. Appl. Climatol.* **120** 797–810
- Goswami B N, Venugopal V, Sengupta D, Madhusoodanan M S and Xavier P K 2006 Increasing trend of extreme rain events over India in a warming environment *Science* **314** 1442–5
- Gray W M 1968 Global view of the origin of tropical disturbances and storms *Mon. Weather Rev.* **96** 669–700
- Gray W M 1979 Hurricanes: their formation, structure and likely role in the tropical circulation *Meteorology Over the Tropical Oceans* **77** 155–218
- Guhathakurta P and Rajeevan M 2008 Trends in the rainfall pattern over India *Int. J. Climatol.* **28** 1453–69
- Jadhav S K and Munot A A 2009 Warming SST over Bay of Bengal and decrease in formation of cyclonic disturbances over the Indian region during southwest monsoon season *Theo. Appl. Climatol.* **96** 327–36
- Jin F J, Kitoh A and Alpert P 2011 Climatological relationships among the moisture budget components and rainfall amounts over the Mediterranean based on a super-high-resolution climate model *J. Geophys. Res.* **116** D09102
- Joseph P V and Raman P 1966 Existence of low level westerly jet stream over peninsular India during July *Ind. J. Meteor. Geophys.* **17** 407–10
- Joseph P V and Simon A 2005 Weakening trend of the southwest monsoon current through peninsular India from 1950 to the present *Curr. Sci.* **89** 687–94
- Kalnay E *et al* 1996 The NCEP/NCAR 40-year reanalysis project *Bull. Am. Meteorol. Soc.* **77** 437–70
- Kamae Y, Watanabe M, Kimoto M and Shioyama H 2014 Summertime land–sea thermal contrast and atmospheric circulation over East Asia in a warming climate—: Past changes and future projections *Clim. Dyn.* **43** 2553–68
- Kitoh A, Endo H, Krishna Kumar K, Cavalcanti I F, Goswami P and Zhou T 2013 Monsoons in a changing world: a regional perspective in a global context *J. Geophys. Res.* **118** 3053–65
- Koteswaram P and Bhaskara Rao N S 1963 Formation and structure of Indian summer monsoon depressions *Aus. Meteor. Mag.* **41** 2–75
- Krishnamurti T N, Molinari J, Pan H and Wong V 1977 Downstream amplification and formation of monsoon disturbances *Mon. Weather Rev.* **105** 1281–97
- Kumar J R and Dash S K 2001 Interdecadal variations of characteristics of monsoon disturbances and their epochal relationships with rainfall and other tropical features *Int. J. Climatol.* **21** 759–71
- Lau W K and Kim K M 2010 Fingerprinting the impacts of aerosols on long-term trends of the Indian summer monsoon regional rainfall *Geophys. Res. Lett.* **37** 16
- Li Z, Yu W, Li T, Murty V S N and Tangang F 2013 Bimodal character of cyclone climatology in Bay of Bengal modulated by monsoon seasonal cycle *J. Clim.* **26** 1033–46
- Ma J and Yu J Y 2014 Paradox in South Asian summer monsoon circulation change: lower tropospheric strengthening and upper tropospheric weakening *Geophys. Res. Lett.* **41** 2934–40
- Mandke S K and Bhide U V 2003 A study of decreasing storm frequency over Bay of Bengal *J. Ind. Geophys. Uni.* **7** 53–8
- Meehl G A, Arblaster J M and Collins W D 2008 Effects of black carbon aerosols on the Indian monsoon *J. Clim.* **21** 2869–82
- Mooley D A and Shukla J 1989 Main features of the westwards moving low pressure area systems which form over the Indian region during the summer monsoon season and their relation to the monsoon rainfall *Mausam* **40** 137–52
- Nieves V, Willis J K and William C P 2015 Recent hiatus caused by decadal shift in Indo-Pacific heating *Science* **349**.6247 532–5
- Pai D S, Latha S, Rajeevan M, Sreejith O P, Satbhai N S and Mukhopadhyay B 2014 Development of a new high spatial resolution (0.25° × 0.25°) Long period (1901–2010) daily gridded rainfall *Data Set Over India and Its Comparison With Existing Data Sets Over The Region Mausam* **65** 1–18
- Pant G B and Parthasarathy S B 1981 Some aspects of an association between the Southern Oscillation and Indian summer monsoon *Arch. Meteorol. Geophys. Bioklimatol. Series B* **29** 245–52
- Patwardhan S K and Bhalme H N 2001 A study of cyclonic disturbances over India and the adjacent ocean *Int. J. Climatol.* **21** 527–34
- Pottapinjara V, Girishkumar M S, Ravichandran M and Murtugudde R 2014 Influence of the atlantic zonal mode on monsoon depressions in the bay of bengal during boreal summer *J. Geophys. Res. Atmos.* **119** 6456–69
- Prajeesh A G, Ashok K and Rao D V B 2013 Falling monsoon depression frequency: a Gray-Sikka condition perspective *Scientific Report* **3** 1–8
- Rajeevan M, De U S and Prasad R K 2000 Decadal variation of sea surface temperatures, cloudiness and monsoon depressions in the north Indian Ocean *Curr. Sci.* **79** 283–5
- Ramanna G R 1969 Relationship between depressions of Bay of Bengal and tropical storms of the China Sea *Ind. J. Meteor. Geophys.* **20** 148–50
- Rao B R S, Rao D V B and Rao V B 2004 Decreasing trend in the strength of tropical easterly jet during the Asian summer

- monsoon season and the number of tropical cyclonic systems over Bay of Bengal *Geophys. Res. Lett.* **31** L14103
- Rao V B, Ferreira C C, Franchito S H and Ramakrishna S S V S 2008 In a changing climate weakening tropical easterly jet induces more violent tropical storms over the north Indian Ocean *Geophys. Res. Lett.* **35** L15710
- Rayner N A, Parker D E, Horton E B, Folland C K, Alexander L V, Rowell D P, Kent E C and Kaplan A 2003 Global analyses of sea surface temperature, sea ice, and night marine air temperature since the late nineteenth century *J. Geophys. Res.* **108** 4407
- Roxy M K, Ritika K, Terray P and Masson S 2014 The curious case of Indian Ocean warming *J. Clim.* **7** 8501–9
- Roxy M K, Ritika K, Terray P, Murtugudde R, Ashok K and Goswami B N 2015 Drying of Indian subcontinent by rapid Indian Ocean warming and a weakening land-sea thermal gradient *Nat. Commun.* **6** 7423
- Sanap S D, Pandithurai G and Manoj M G 2015 On the response of Indian summer monsoon to aerosol forcing in CMIP5 model simulations *Clim. Dyn.* **45** 2949–61
- Sivakumar M V K, Das H P and Brunini O 2005 Impacts of present and future climate variability and change on agriculture and forestry in the arid and semi-arid tropics *Clim. Change* **70** 31–72
- Sikka D R 1977 Some aspects of the life history, structure and movement of monsoon depressions *Pure Appl. Geophys.* **115** 1501–29
- Sikka D R 1980 Some aspects of the large scale fluctuations of summer monsoon rainfall over India in relation to fluctuations in the planetary and regional scale circulation parameters *Proc. Indian Acad. Sci. Earth Planet. Sci.* **89** 179–95
- Sikka D R and Gadgil S 1980 On the maximum cloud zone and the ITCZ over Indian, longitudes during the southwest monsoon *Mon. Weather Rev.* **108.11** 1840–53
- Srinivasan J and Nanjundiah R S 2002 The evolution of Indian summer monsoon in 1997 and 1983 *Meteor. Atmos. Phys.* **79** 243–57
- Wang B, Liu J, Kim H J, Webster P J, Yim S Y and Xiang B 2013 Northern Hemisphere summer monsoon intensified by mega-El Niño/southern oscillation and Atlantic multidecadal oscillation *Proc. Natl Acad. Sci.* **110** 5347–52
- Wu G, Liu Y, He B, Bao Q, Duan A and Jin F F 2012 Thermal controls on the Asian summer monsoon *Sci. Rep.* **2** 1–7
- Yanai M, Esbensen S and Chu J H 1973 Determination of bulk properties of tropical cloud clusters from large-scale heat and moisture budgets *J. Atmos. Sci.* **30** 611–27
- Yanase W, Satoh M, Taniguchi H and Fujinami H 2012 Seasonal and intra seasonal modulation of tropical cyclogenesis environment over the Bay of Bengal during the extended summer monsoon *J. Clim.* **25** 2914–30
- Zangvil A, Portis D H and Lamb P J 2004 Investigation of the large-scale atmospheric moisture field over the Midwestern United States in relation to summer precipitation: 2. recycling of local evapotranspiration and association with soil moisture and crop yields *J. Clim.* **17** 3283–301