

## 3D simulation of boreal forests: structure and dynamics in complex terrain and in a changing climate

This content has been downloaded from IOPscience. Please scroll down to see the full text.

2015 Environ. Res. Lett. 10 105006

(<http://iopscience.iop.org/1748-9326/10/10/105006>)

View [the table of contents for this issue](#), or go to the [journal homepage](#) for more

Download details:

IP Address: 210.77.64.105

This content was downloaded on 13/04/2017 at 10:21

Please note that [terms and conditions apply](#).

You may also be interested in:

[Potential change in forest types and stand heights in central Siberia in a warming climate](#)

N M Tchebakova, E I Parfenova, M A Korets et al.

[Fire disturbance and climate change: implications for Russian forests](#)

Jacquelyn K Shuman, Adrianna C Foster, Herman H Shugart et al.

[The effects of climate, permafrost and fire on vegetation change in Siberia in a changing climate](#)

N M Tchebakova, E Parfenova and A J Soja

[Spatial heterogeneity of greening and browning between and within bioclimatic zones in northern West Siberia](#)

Victoria V Miles and Igor Esau

[Climate-induced larch growth response within the central Siberian permafrost zone](#)

Viacheslav I Kharuk, Kenneth J Ranson, Sergei T Im et al.

[Evaluating the sensitivity of Eurasian forest biomass to climate change using a dynamic vegetation model](#)

J K Shuman and H H Shugart

[Climate-induced mortality of spruce stands in Belarus](#)

Viacheslav I Kharuk, Sergei T Im, Maria L Dvinskaya et al.

[Diverse growth trends and climate responses across Eurasia's boreal forest](#)

Lena Hellmann, Leonid Agafonov, Fredrik Charpentier Ljungqvist et al.

[The frequency of forest fires in Scots pine stands of Tuva, Russia](#)

G A Ivanova, V A Ivanov, E A Kukavskaya et al.

## Environmental Research Letters



## LETTER

## 3D simulation of boreal forests: structure and dynamics in complex terrain and in a changing climate

## OPEN ACCESS

## RECEIVED

5 August 2015

## REVISED

16 September 2015

## ACCEPTED FOR PUBLICATION

19 September 2015

## PUBLISHED

21 October 2015

Ksenia Brazhnik and Herman H Shugart

University of Virginia, Environmental Sciences Department, USA

E-mail: [ksenia@virginia.edu](mailto:ksenia@virginia.edu)**Keywords:** boreal treeline, spatially-explicit simulation, gap dynamics, climate sensitivity, treeline migration, ecotone shift

Content from this work may be used under the terms of the [Creative Commons Attribution 3.0 licence](#).

Any further distribution of this work must maintain attribution to the author(s) and the title of the work, journal citation and DOI.

**Abstract**

To understand how the Siberian boreal forests may respond to near-future climate change, we employed a modeling approach and examined thresholds for significant and irreversible changes in forest structure and composition that are likely to be reached by mid-21st century. We applied the new spatially-explicit gap-dynamics model SIBBORK toward the understanding of how transition zones, namely treelines, which are notoriously undersampled and difficult to model, may change in the near future. We found that a 2 °C change in annual average air temperature significantly altered the structure, composition, and productivity of boreal forests stands both in the northern and the southern treeline ecotones. Treeline migration occurs at smaller temperature changes. Based on the current (1990–2014) observed warming trends, a 2 °C increase in annual average temperature compared to historical climate (1961–1990) is likely to be experienced at the northern treeline by 2040 and at the southern treeline by 2050. With regards to the forest biome, the most significant warming to date has been predicted and observed in Siberia. A 2 °C increase in annual average temperature compared to the second half of the 19th century is smaller than the predictions of even the most conservative RCP2.6 climate change scenario (IPCC 2013), and has previously been assumed to not likely result in dramatic changes to ecosystems or biome shifts. We show that at a +2 °C change, biome shifts from forest to steppe are likely to occur across a large area in southern Siberia. These changes in land cover will inevitably result in changes in the biodiversity, carbon storage, and the ecosystem services provided by the boreal forests of southern Siberia.

**Introduction**

Boreal forests contain approximately half of the terrestrial carbon (Gower *et al* 2001), which is mostly stored in soils and permafrost (Strauss *et al* 2013). However, changes in boreal forest vegetation structure, composition and productivity can affect how the below-ground carbon is exchanged with the atmosphere (Betts 2000, Bonan 2008, Hollinger *et al* 2010, Ma *et al* 2012, Groisman and Gutman 2013, Kuusinen *et al* 2014). For example, increased tree mortality from wildfires, insect outbreaks, and other disturbances, release carbon to the atmosphere. These disturbances and associated changes in species composition additionally can lead to albedo changes and more exposed soils, which may facilitate further release of carbon from soils and permafrost (Krankina *et al* 2005).

Simultaneously, a warmer environment may facilitate increased productivity, especially in forests where precipitation and air temperature increase concurrently.

Modeling allows us to synthesize field data, to understand forest processes, and to extrapolate for conditions not currently observed, such as future climate. Any model is based on simplifications and assumptions, which carry with them a certain level of uncertainty. Our study employs a new spatially-explicit gap dynamics model, SIBBORK, which has been validated for forest composition and structure for southern- and middle-taiga ecotones (Brazhnik and Shugart 2015). SIBBORK has a high spatial resolution, and does not assume climate–vegetation links utilized in other models that have been used to assess potential changes in boreal vegetation (e.g., SiBCliM,

Tchebakova *et al* 2009). SIBBORK does not include chilling requirements for growth and regeneration that could drive especially the southern boundary of species ranges, or frost tolerance that may limit the northward distribution. The species ranges in SIBBORK are reproduced based on interspecific competition in combination with species-specific tolerances to limitations on four environmental factors deemed of primary importance for forest vegetation processes (Pastor and Post 1986, Urban 1990): available light, soil moisture, soil fertility, and growing degree days. The model explicitly considers the fully-coupled three-dimensional light-environment including the effect of available light on tree growth, and the feedback with the amount of foliage affecting available light throughout the canopy. The model does address the multitude of other ways in which vegetation potentially affects the local microclimate. The current version of SIBBORK does not include permafrost or disturbances, whereas changes in both have been forecast for the near future in Siberia and may contribute to current treeline location and future migration. Nonetheless, SIBBORK contains several strengths that render it the appropriate model for this investigation. In contrast to many models that employ parameterizations at the plant functional type level (e.g., FORMIX3, Huth *et al* 1998), SIBBORK utilizes species-specific parameterizations, which include tolerances to environmental stressors and reflect differences in vascular and root structure. For example, larch is more drought-tolerant than spruce due to difference in root structures (Babushkina *et al* 2010), and pine is more drought-tolerant than broadleaf species due to differences in vascular structure (Bauweraerts *et al* 2014). The model outputs are at the individual tree level, in contrast to models that evaluate cohorts or size classes. Furthermore, SIBBORK does not require or assume landscape homogeneity, which allows for heterogeneous landscapes and associated gradients to be simulated. Vegetation responds to the environmental conditions on the landscape, and we are therefore able to resolve the differential responses of vegetation, which include differences in stand structure and composition, based on the simulated conditions on the landscape. Application of SIBBORK to the simulation of transition zones and the response of vegetation in these ecotones presents a new approach to evaluating treeline migration with changes in the thermal regime and simultaneously provides a rigorous test of this new model's capabilities.

There is uncertainty in how these changes in forest structure and composition will affect the role of Russian boreal forests in the global carbon cycle. To understand how the boundaries of the Siberian boreal forest may shift in the near future and to provide a rigorous test for a new gap dynamics model, we applied the new gap dynamics vegetation model SIBBORK to the investigation of potential changes at the northern and southern treeline transition zones in central

Siberia, which has some of the fastest recorded warming rates (Gruza *et al* 2015). These shifts in temperature regimes are likely to drive change in forest structure in the near future, in as little as decades. This will likely have a significant effect on how carbon is cycled between the boreal ecosystem and the atmosphere.

## Methods

A thorough description of this new gap dynamics model can be found in Brazhnik and Shugart (2015). Briefly, SIBBORK is an individual-based gap model, which tracks the establishment, growth, and mortality of individual trees on 10 m × 10 m plots, which are arranged in a grid along user-specified terrain. Tree location on the terrain is resolved at the plot scale for a maximum stand density. Since it retains plots and specifies environmental conditions at the plot-level resolution, SIBBORK is not a continuous space model *sensu* Grimm and Railsback (2005) for competition and other interactions. Tree establishment, growth and mortality are kept track of on an annual basis through the state variables of diameter at breast height (DBH) and crown base. The governing equations in SIBBORK address tree growth, the interactions among trees through shading, and the interactions between trees and their environment. The four environmental factors explicitly parameterized are growing degree days above a base temperature of 5° (GDD<sub>5</sub>), soil moisture as a function of precipitation, evapotranspiration and runoff, available light throughout the canopy as a function of foliage density, and soil fertility, which caps the annual gross primary productivity. The environmental conditions (incident radiation, air temperature, soil fertility) are specified at the plot-level, which significantly enhances the resolution of the conditions on the landscape and allows for simulation of vegetation response to changes in those conditions.

In a transition zone simulation, environmental conditions change along a transect or across a region. Artificially compressed gradients (i.e. radiation, temperature) can be imposed within the simulation domain. At the southern boreal treeline in central Siberia, the transition is along a steepened gradient due to the presence of complex terrain. On mountain slopes, transitions between ecotones occur along 100 s of meters, whereas similar transitions occur along 100 s of km on flat terrain (Holtmeier and Broll 2005, Soja *et al* 2007, Kharuk *et al* 2010a). Using the ASTER GDEM (METI and NASA 2011) resampled at 10 m × 10 m resolution, the incident radiation is computed using the Area Solar Calculator (Fu and Rich, 2002) in ArcGIS (ESRI v10.2 2014). An environmental lapse rate of 6.5 °C km<sup>-1</sup> is applied to extrapolate the temperature from the nearest weather station to the simulated landscape based on elevation

(Polikarpov 1986). Downscaling of precipitation to the resolution of several meters is poorly understood, therefore, in the model, the entire simulated region receives the same monthly precipitation. Soil fertility, field capacity, and wilting point are specified for each plot based on soil type using data and soil nomenclature from Onuchin (1962) and Stolbovoi and Savin (2002).

A treeline is a transition between a region dominated by arboreal vegetation and one with a general absence of trees (Stevens and Fox 1991). These transitions occur at the northern or southern edge of tree dominance, or on a more local scale, such as along an elevational gradient or along the boundary of a body of water. The drivers of northern treeline are poorly understood, but likely include a combination of the following: the distribution of continuous permafrost (Kryuchkov 1973), the average position of the polar front (Pielke and Vidale 1995), the 10 °C–12 °C July isotherm (Anuchin 1986), the length of the growing season (Stevens and Fox 1991), incident radiation during the growing season (MacDonald *et al* 2000), winds (Holtmeier and Broll 2005), the balance between precipitation (P) and potential evapotranspiration (PET) (Hogg and Hurdle 1995), and other components of the local climate (Esper and Schweingruber 2004, Kharuk *et al* 2006, Sun *et al* 2011). In contrast, the southern treeline of the boreal forest experiences a large degree of climatic continentality, and has different potential drivers, which may include a combination of the local temperature/precipitation regimes (Chytry *et al* 2008), the 19 °C–20 °C July isotherm (Anuchin 1986), the P-PET balance (Kharuk *et al* 2013b), winds (Holtmeier and Broll 2010), fire regime (Ivanova *et al* 2010), and competition with shallow-rooted grasses, which may be better at utilizing the meager amounts of precipitation received during the growing season than deep-rooted, large-structured trees (Stevens and Fox 1991). Additionally, the microclimates associated with complex terrain, as well as resource and vegetation patchiness, can promote tree establishment and growth even when the surrounding conditions are not favorable to arboreal vegetation. Not all of these environmental factors are captured by SIBBORK, however, the simulation of transition zones, such as treelines, provides a rigorous test for the strength of SIBBORK in simulating three-dimensional terrain and associated gradients, and the resulting heterogeneous response of vegetation to the conditions on the landscape.

We selected the relatively data-rich northern tree-line ecotone in the Karsnoyarsk Region of central Siberia for simulation with SIBBORK to better understand how the structure and dynamics of this vegetation may change with shifts in temperature and precipitation regimes. The topography at northern treeline is relatively flat (figure 2(a)), with poor drainage and low soil fertility on gleyzem soils (Stolbovoi and Savin 2002) underlain by continuous permafrost

(Kotlyakov and Khromova 2002). Along the Yenisei River meridian, the treeline is observed between the World Meteorological Organization (WMO) weather stations of Dudinka (#23 074, 69.4° N, 86.18° E, 19 m above mean sea level or amsl) and Turukhansk (#23 472, 65.47° N, 87.56° E, 32 m amsl), 440 km to the south. Average monthly temperatures and precipitation totals were computed for these two stations using the meteorological record from 1936–1990 (NCDC 2005a, NCDC 2005b). The climates at the two stations set the conditions for the southern and northern edges of the simulated transect, with a linear interpolation of monthly temperatures in between to specify the thermal regime at the plot-level. The ArcGIS Area Solar Calculator (Fu and Rich 2002) was used to compute monthly radiation at the plot-level for Igarka (#23 274, 67.28° N, 86.32° E, 30 m amsl), located between Dudinka and Turukhansk, which was then validated against observations from the nearest World Radiation Data Centre ([wrdc-mgo.nrel.gov](http://wrdc-mgo.nrel.gov)) station in Olenek (68.30° N, 112.26° E). The northern treeline is discontinuous, dominated by larch (*Larix sibirica*), with a maximum productivity of up to 100 m<sup>3</sup> ha<sup>-1</sup> (wood volume) found along the river and stream banks (Bartalev 2010, Bartalev *et al* 2011, Huttich *et al* 2014). Environmental conditions specified in SIBBORK simulation of northern treeline are listed in the top row of table 1.

In contrast, the southern taiga treeline occurs in the complex terrain of the generally east–west-oriented Altay–Sayan mountain system (Ivanova *et al* 2010) and mountain ranges of northern Mongolia. Treelines are found for both the lower and higher elevational limits of forest. Although the north-western Altay–Sayan receives considerable precipitation on windward slopes (up to 1600 mm yr<sup>-1</sup>; Chytry *et al* 2008), the south-central Altay–Sayan region, and specifically the Tannu-Ola, Sengilen, and Obruchev ranges are characterized by high continentality, with average July temperatures exceeding 20 °C in the valleys and basins, annual precipitation of 200–500 mm and PET of 150–300 mm yr<sup>-1</sup> (Samoilova 1973, Ivanova *et al* 2010). Both slopes are in a rain shadow, but the south-facing slopes receive more insolation, which drives higher PET demands and results in drier soils and vegetation dominated by grasses rather than trees.

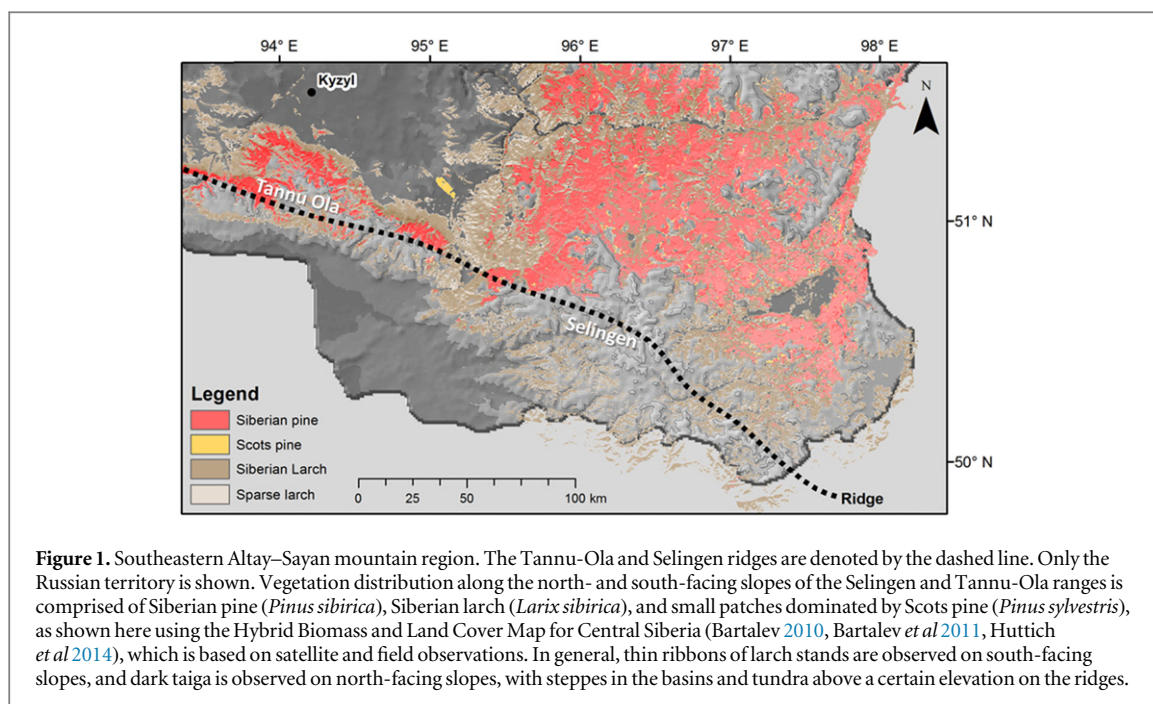
The distribution of vegetation differs based on elevation and slope aspect, with coniferous forests dominating the north-facing slopes, and steppe and hemiboreal forests prevalent on south-facing slopes, called ‘expositional forest-steppe’ (Sedel’nikov 1979, Wilmking *et al* 2004, Dulamsuren *et al* 2005b, Kulagin *et al* 2006, Chytry *et al* 2008, Kharuk *et al* 2009, 2010a, 2010b, Timoshok *et al* 2014). Species composition differs among the different sub-regions within the Altay–Sayan Mountains. Although there is variability between individual mountain ranges, on average the south-facing slopes below 1500 m amsl are dominated by the steppe ecotone. An alpine belt,

**Table 1.** Environmental conditions at northern and southern limits of the boreal forest in central Siberia.

Lat. °N long. °E alt. (m)	Aspect	Slope	Plot size (m <sup>2</sup> )	Simulation domain (plots, ha)	Mean monthly precipitation (mm)	Dominant soil type(s)	Soil field capacity (cm)	Soil wilting point (cm)
69.4 86.4 19.0 51.4	None	Flat	100	12 × 181, 21.72	30–59	Gleyzems	62.5	31.25
94.2 100–3000	North/south	sloped, ridge	100	12 × 581, 69.72	3–47	Cambisols, kastanozems	26.5	13.25
Mean monthly temperature (°C)	Mean monthly precipitation (mm)	Mean monthly radiation (W m <sup>-2</sup> )	Mean monthly radiation (growing season) (W m <sup>-2</sup> )	Relative direct and diffuse solar radiation ratio (growing season)				
–27.7 to +13.5	30–59	191	251	0.33/0.67				
–30.1 to +19.9	3–47	285	303	0.5/0.5				

*Note:* top row—topographic, climatological and edaphic conditions at Dudinka, near northern treeline.

Bottom row—topographic, climatological and edaphic conditions near Kyzyl, in southern Alay–Sayan mountain region.



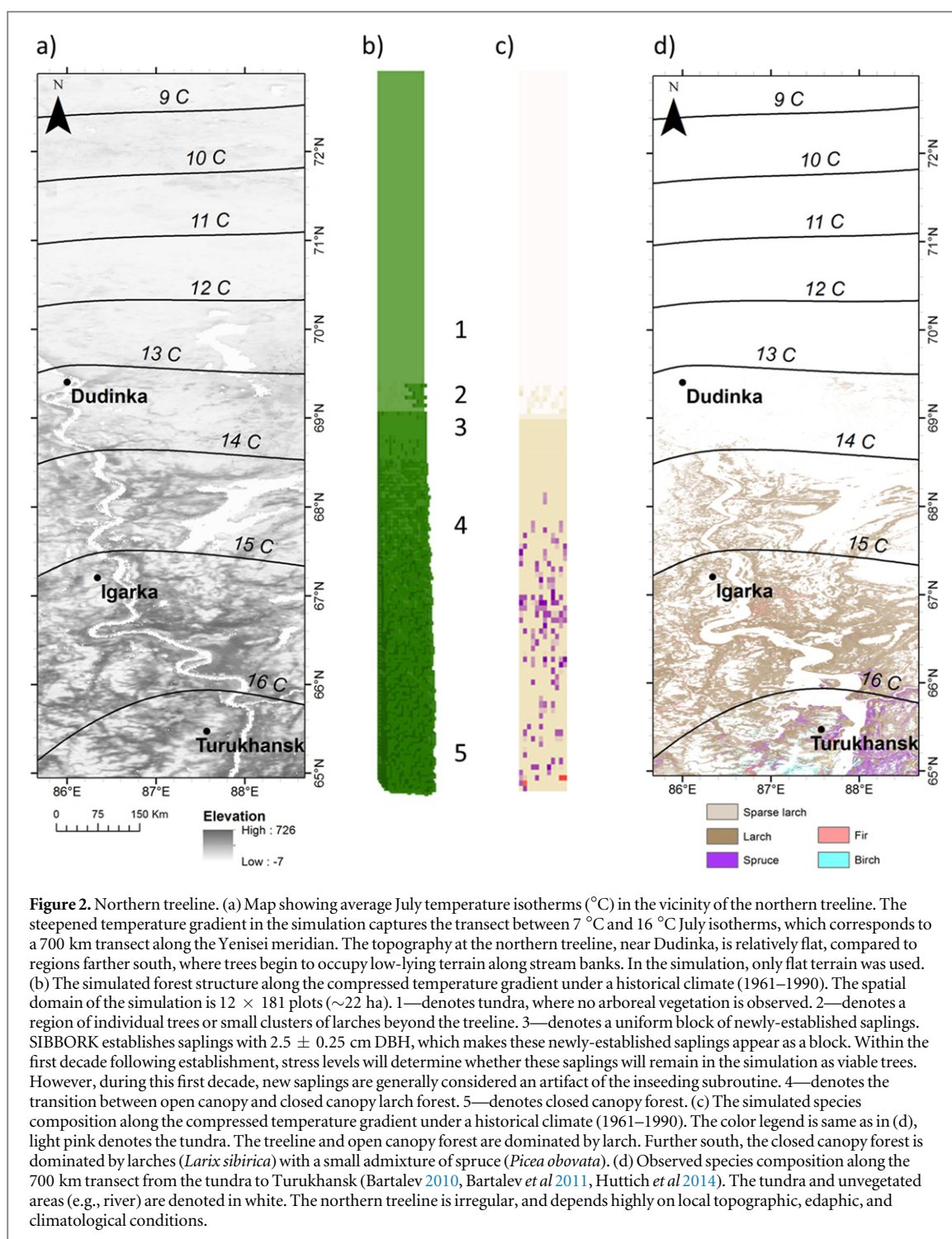
containing larch (*Larix sibirica*), Siberian fir (*Abies sibirica*), and Siberian cedar (*Pinus sibirica*, also called Siberian pine or Siberian Stone pine) stands is found 1500–2000 m, above which alpine tundra dominates. Along north-facing slopes, dark taiga, comprised of Siberian fir, Siberian spruce (*Picea obovata*), and Siberian cedar, extend up to 1750 m, with the subalpine belt found 1750–2100 m, and tundra above that (Gorchakovskiy and Shiyatov 1978, Isachenko et al 1988, Istomov 2005, Chytry et al 2008, Kharuk et al 2013b), although in some locations the transition to tundra is found higher, at 2200–2400 m (Ovchinnikov and Vaganov 1999). The variability of vegetation belts along the Altay–Sayan mountain range is often on the order of 300–500 m and can be up to 1000 m (Monsrud and Tchebakova 1996).

To simulate the southern treeline, an artificial digital elevation model for an idealized 3000 m tall ‘mountain’ with south- and north-facing slopes was generated. This DEM was used to compute the incident radiation in ArcGIS and the elevation-based temperature adjustment from the nearest WMO weather station located in Kyzyl (#36 096, 51.4° N, 94.23° E, 629 m amsl) using the 6.5 °C km<sup>-1</sup> lapse rate (Poliarpov et al 1986). GIS-generated monthly radiation was validated against observations from the nearest World Radiation Data Centre station in Irkutsk (51.16° N, 104.21° E). PET and GDD<sub>5</sub> were computed along the mountain slopes using plot-level monthly temperature and radiation input, and simulation-wide precipitation (200–500 mm yr<sup>-1</sup>; Samoilo, 1973, NCDC 2005b). We did not adjust the precipitation received on the north- versus the south-facing slope of the idealized mountain in the simulation, and focused more on the average conditions representative of the Tannu Ola and Selingén ridges, which are most

proximal to the southern treeline in the Krasnoyarsk region (figure 1).

A soil fertility gradient was generated based on description of mountain soils in that region, with more fertile soils along the foothills, and shallower, less fertile soils toward the top of the ridge (Samoilova 1973, Chytry et al 2008, Chlachula and Sukhova 2011). Soil fertility in SIBBORK is specified as a cap on gross annual productivity (GPP). Simulated plots along the lower slopes were assigned a GPP cap of 6 t ha<sup>-1</sup> yr<sup>-1</sup>, whereas GPP in plots at the top of the ridge was capped at 1 t ha<sup>-1</sup> yr<sup>-1</sup>. The GPP limit was estimated based on the correlation between site index and forest productivity in forestry yield tables (Shvidenko et al 2006) and a map of biological productivity for Russia (Isachenko 1985). Soils in these mountains are mostly well draining cambisols, with kastanozems in the arid valleys where arboreal vegetation is generally absent (Samoilova 1973, Stolbovoi and Savin 2002, Ivanova et al 2010). Field capacity and wilting point were computed from a georeferenced database of soils (Stolbovoi and Savin 2002) for the average cambisols found on Sayan mountain slopes. Environmental conditions specified in SIBBORK simulation of southern treeline are specified in the bottom row of table 1.

To minimize computational expense, the spatial domain of the northern treeline simulation was limited to 2 km × 120 m (22 ha). A compressed thermal gradient was created via temperature adjustment to each row of plots within this swath of landscape. The generated July temperature gradient is shown in figure 2(a), and stretches between 7 and 16 °C. This temperature gradient corresponds to an approximately 700 km long transect along the Yenisei meridian, as determined from temperature interpolation



between the Dudinka, Igarka, and Turukhansk WMO weather stations. Conversely, for the simulation of the southern treeline, an idealized 100–3000 m amsl mountain was created ( $6 \text{ km} \times 120 \text{ m}$ , 70 ha), with half of the area on the north-facing and the other half on the south-facing slopes. Elevation-based adjustment to air temperature was applied, but the thermal gradient was not compressed, so the distances and elevation within the simulation represent actual distances and elevation gradients.

For all simulations, the historical climate, which is described by monthly average temperatures and

precipitation sums, was defined by the WMO pre-1990 record, as in Gruzina *et al* (2015). Simulations were initialized from bare ground (no trees, but seeds available), with in seeding turned on for all species of interest to the timber industry in the Krasnoyarsk Region. The start year of the simulation was assigned based on the average age of the forest reported for each region, which is based on the mean fire return interval for the region of interest:  $\sim 100$  for northern treeline (Pautova 1976, Mitrofanov 1977, Deyeva 1985, 1987, Esper and Schweingruber 2004, Kharuk *et al* 2005, 2006), 60–80 years for southern Siberian mountains

**Table 2.** Observed warming trends by location and season during 1990–2014 from Gruza *et al* (2015).

Site	Winter	Spring	Summer	Autumn
Units	(°C yr <sup>-1</sup> )	(°C yr <sup>-1</sup> )	(°C yr <sup>-1</sup> )	(°C yr <sup>-1</sup> )
Northern treeline	0.02	0.1	0.03	0.02
Southern treeline	0	0.055	0.045	0.028

(Onuchin 1986, Houghton *et al* 2007, Buryak *et al* 2009, Ivanova *et al* 2010). Wildfire and other disturbances rarely occur at northern treeline, so the average age of the stands can be in excess of 100 years (Esper and Schweingruber 2004). In contrast, frequent disturbances, such as annual ground fires on the dry south-facing slopes (Ivanova *et al* 2010), significant variability in crown fire frequency over the 20th century, and an increased occurrence of insect outbreaks (Kondakov 2002) in the Altay–Sayan mountains maintain a younger forest, but the more moist north-facing and upper slopes have some old trees in excess of 400 years (Ovchinnikov and Vaganov 1999, Istomov 2005).

To approximate the average stand age in the simulation, estimated based on the fire return interval for each ecotone, the first year of the simulation was initialized from bare ground corresponding to the calendar year 1890 and 1910, in the simulation of the northern and southern treeline ecotones, respectively. In the year 1990, warming trends were applied as seasonal linear monotonic increases to the simulated monthly temperature based on the observed seasonal warming trends for each region (Buermann *et al* 2014, Gruza *et al* 2015). Both, historical and warmed air temperatures were adjusted at the plot-level for elevation relative to the nearest weather station. The historical climate parameters and the warming trends are specified in tables 1 and 2, respectively. Model outputs from 150 replicates were recorded at 5 year increments. The height and biovolume, both of which are function of DBH, were computed for each tree on each plot and averaged across the replicates. Raster maps of the most frequently dominating species (mode), as well as Lorey's height and biovolume, were generated at plot-level resolution. (Note: biovolume is a field-estimated parameter for the volume of the tree trunk, commonly reported in forestry yield tables and field surveys. This is in contrast to biomass, measurements of which require destructive sampling, and is often computed from field-estimated biovolume using bulk wood density, instead.) The precipitation regime was not altered alongside warming during these simulations, as no appreciable changes in growing season precipitation were observed in the Altay–Sayan mountains since the 1970s (Kharuk *et al* 2013a, Gruza *et al* 2015), and although annual precipitation has somewhat increased at the northern treeline, this

transition zone is not water limited and increase in soil moisture is not likely to significantly affect the arboreal vegetation growing there.

## Results

Based on very simple parameterization of climatological and environmental conditions, in which the plots receive an enhanced temperature adjustment based on the distance from the nearest weather station, creating a steepened temperature gradient across the northern treeline ecotone, equal receipt of precipitation on each plot, and GIS-based incident radiation for the latitude of interest, SIBBORK generates annual PET and GDD<sub>5</sub> at the plot level. In this simulated environment, SIBBORK plants saplings and grows trees based on species-specific tolerances and silvicultural information. In this case, SIBBORK planted and grew predominantly larches, the height, biovolume and density of which decreased to the north. North of a certain point along the air temperature gradient, no saplings were established. This constitutes the northern forest limit—the treeline—in the simulation (figures 2(b) and (c)).

The simulated treeline coincides with the 12 °C July isotherm and the 30 cm yr<sup>-1</sup> PET isoline in the simulation, similar to the conditions observed at the northern treeline (Kolosova 1982, Malysheva 1993). Trees become stunted north of 500 °C GDD<sub>5</sub>. The established larch saplings are stressed due to insufficient heat during the growing season and succumb to stress-related mortality within the first few decades of life north of 400 °C GDD<sub>5</sub>, and are not able to establish north of 300 °C GDD<sub>5</sub>. This latter cutoff is in agreement with the Sayan Mountain model (Monseud and Tchebakova 1996), which also draws a division between tundra and taiga vegetation at 300 °C GDD<sub>5</sub>. South of 500 °C GDD<sub>5</sub>, canopy dominant larch trees achieve 20–24 m in height, with average biovolume of 102 ± 39 m<sup>3</sup> ha<sup>-1</sup>, and an admixture of spruce begins to appear. This compares well to observed biovolume of 75–100 m<sup>3</sup> ha<sup>-1</sup> in larch stands between the 14 °C and 15 °C July isotherms (Bartalev, 2010). The likely reason the simulated biovolume appears a little high is because the small saplings are not excluded from the biovolume calculation. Bartalev (2010) does not report the minimum DBH used for biovolume calculation in his database.

The structure and composition of the simulated forest along these thermal transitions are shown in figures 2(b) and (c). If there are no disturbances and the forest is allowed to grow for several centuries, spruce plays a more dominant role south of 500 °C GDD<sub>5</sub> by year 400 (this corresponds to region 5 in figures 2(b) and (c)). To the south of that, mixed dark conifer taiga prevails. In the simulation of the northern treeline, trees essentially stop growing where they are supposed to. Species ranges are not specified in



SIBBORK. Species stop growing whenever the environmental conditions are not favorable to seedling establishment, or where the trees are too stressed to obtain >10% of age- and species-specific optimal diameter growth and succumb to stress-related mortality, as is the case north of the treeline. To the south, species (e.g. larch) may be outcompeted by other species (e.g. spruce), for which the site conditions are more favorable. GDD<sub>5</sub> is not the only driving factor for the northern treeline and species distribution, but here provides a systematic way to describe the orientation of stands of different structures and composition along a (compressed) thermal gradient. The simulated species distribution closely resembles the observed species distribution between the tundra and Turukhansk, and simulates the location of the northern treeline very close to the observed treeline along the Yenisei River meridian, as shown in figures 2(c) and (d).

Within the first few decades of warming corresponding to year 1990–2020, the sparse, unstable, severely stunted larch saplings at the northern treeline are able to establish farther north, up to the new 400 °C GDD<sub>5</sub> isoline, with unstable saplings extending north to the new 300 °C GDD<sub>5</sub> isoline. Colonization to the north appears almost immediate, on the order of years to decades, as conditions change to allow regeneration. This may be an artifact of the sapling establishment subroutine, which plants trees at a DBH of  $2.5 \pm 0.25$  cm. Siberian larch of this diameter can be 4.7–6.4 m tall and 16–40 years old, depending on site index, which makes it seem as though trees, not saplings, appear beyond the treeline mere years after the warming trend is applied. This rapid response could potentially be delayed through modification to the in-seeding subroutine or if spatially-explicit dispersal processes were included in the model (Kharuk *et al* 2006). However, not enough data are available on small saplings with DBH less than 2.5 cm in this region for validation of a new sprouting subroutine. With regards to vegetation responses in the spatial and temporal domains, regeneration of larches has been observed >3 km from the nearest treeline (Kharuk *et al* 2006), and rapid treeline equilibration with environmental conditions is seen in some paleoecological as well as in more recent records (Clark 1998, Kullman and Kjallgren 2006), thus, the limit on seed dispersal may not need to be as stringent. As warming continues over the course of 150 years, however, the treeline in the simulation does not continue to advance northward. Instead, the stands south of the treeline accrue biomass, and a gentle decrease in maximum tree height is observed between what used to be the treeline under the historical climate, where full mature trees now grow, and the new treeline.

For the simulation of the southern boreal boundary, SIBBORK computes PET and GDD<sub>5</sub> on each plot based on temperature extrapolated from the nearest WMO station based on elevation and radiation computed for the north- and south-facing slopes of a given

steepness. Slopes of both aspects receive the same amount of precipitation. SIBBORK appropriately simulates a drier environment on the south-facing slope and a 12 °C July isotherm around 2000 m amsl on the north-facing slope. Because of differential environmental conditions, different species are able to establish and become dominant at different elevations on the two opposite slopes. On the south-facing slope, no trees occur in the simulation up to 1400 m. Between 1400 and 2200 m, larches dominate, with stunted and stressed larches occurring close to the lower (1400–1500 m) and upper (2100–2200 m) elevational treelines. Larches at the lower tree line are stressed by insufficient soil moisture, whereas at the upper timberline they are stressed by insufficient heat. Above 2200 m no arboreal vegetation is simulated. On the north-facing slope, the vegetation is starkly different—dark conifers (fir, spruce, Siberian cedar) dominate the slope up to 1800 m. The Lorey's height of the mixed conifer forest reaches 22–24 m at lower elevations, and gradually decreases to 5 m at 1800 m. Above 1800 m, larches gain dominance, but these trees are significantly shorter ( $3.7 \pm 0.7$  m) than the stands observed on the south-facing slope at the same elevation. Above 2040 m the larch populations are unstable, severely stunted, and stressed by insufficient GDD<sub>5</sub>. No arboreal growth occurs in the simulation above 2180 m on the north-facing slope. The simulated elevational distribution of boreal vegetation is remarkably similar to observed vegetation belts in the Altay–Sayan mountain system (table 3).

Within the first few decades of warming (this corresponds to years 1990–2030), the lower treeline on the south-facing slope retreats uphill up to 2000 m. Larches are able to establish sparsely at 1600–2000 m, but they are drought-stressed and do not survive more than a few decades. Meanwhile, on the north-facing slopes, the larch stands grow taller, and the admixture of spruce in the 1600–2000 m belt increases. As warming continues over the course of 150 years (this corresponds to years 2110–2150), the spruces almost completely replace the larches on the north-facing slope, while on the south-facing slope the lower treeline retreats to 2000 m. By the year 2100, the upper treeline advances to 3000 m, which is the highest elevation simulated.

## Discussion

Overall, the SIBBORK simulation of the environmental conditions, as well as vegetation structure and composition at the northern and southern boreal treeline ecotones matches field observations.

Larch dominates the northern treeline in central Siberia. The treeline is not a continuous wall of forest, but rather a gradual decrease in stand density from south to north, until just a few individual trees or clumps of trees are surrounded by tundra (Aksenov

**Table 3.** SIBBORK model output (bottom row) compared to descriptions of vegetation belts by aspect and elevation in the Altay–Sayan mountain region found in the literature. Note that aspect is not always specified in descriptions of vegetation belts, and so may include the highest and lowest elevations observed for certain vegetation, describing a larger range than may be encountered on a slope of a given aspect. Each article describes different regions within the Altay–Sayan mountain region, and it is understandable that the climate at the same aspect and elevation on various mountain ranges is likely to be different due to local conditions, location of the mountain range within the mountain system, differences in local lapse rates, and the location of this elevation band relative to the overall mountain height (Kammer *et al* 2007). ‘None’ signifies no arboreal vegetation at the specified elevation and aspect.

Source	Tundra	Subalpine belt	Forest belt	Steppe
Samoilova 1973	In west and central: >1900–2000 m In south and eastern: >1400–1500 m		1000–1900 m	S:300–1000 m
Polikarpov <i>et al</i> 1986	S: >1600 m N: >1400 m	S: 600–1600 m	N: 300–1400 m	S: <600 m N: <300 m
Gorchakovskiy and Shiyatov 1978	>1500–2200 m	—	—	—
Isachenko <i>et al</i> 1988	S: >2000 m N: >2100 m	S: 1500–2000 m N: 1750–2100 m	S: none S: <1750 m	S: <1500 m N: none
Rakovskaya and Davydova 1990	S: >2200–2400 m N: >1200–2000 m	S: 800–2200 m N: 800–2000 m	S: 700–1800 m N: 200–1400 m	S: <700 m N: <200 m
Ovchinnikov and Vaganov 1999	S: >2200 m N: >2000–2200 m	—	—	—
Moiseev 2002	>1600 m	1300–1600 m	<1440 m	—
Chytry <i>et al</i> 2008	S: >2000 m N: >1600–1750 m		600–1950 m	<600 m
Kharuk <i>et al</i> 2010b	>2570 m		1800–2500 m	—
Kharuk <i>et al</i> 2013b	1350–1500 m	1100–1350 m	600–1100 m	S: <600 m
SIBBORK (Simulated)	S: 2200 N: 2100	S: 1340–2000 m N: 1800–2000 m	S: none N: <1800 m	S: <1500 m N: none

*et al* 2002, Holtmeier and Broll 2005). In the simulation, the northernmost stands are sparse and stunted, with tree height and biovolume increasing southward along the simulated transect. Just to the east of Dudinka, along the lower slopes of the Putorana Plateau, stands with average heights of 6.2 m and biovolume of 4–33 m<sup>3</sup> ha<sup>-1</sup> have been observed, albeit for birch stands. In our simulation, northern treeline is comprised of larch stands with Lorey’s height of 7.2 ± 2.6 m, and biovolume of 6–10 m<sup>3</sup> ha<sup>-1</sup>. Biovolume for larch-dominated treeline along the Yenisei River meridian is not available, and often only described as ‘sparse larch’ (Bartalev 2010).

The gradual decrease in stand density is appropriately simulated by SIBBORK, with few individual trees separate from the low density open canopy forest (region 2 in figure 2(b)), and biovolume increasing from 7 ± 1.3 m<sup>3</sup> ha<sup>-1</sup> near the treeline to 45.9 ± 14.2 m<sup>3</sup> ha<sup>-1</sup> at the 14 °C July isotherm. Spruce is not encountered until the transition from very poorly drained gleyzems soils to moderately well drained podzolic soil, 200–300 km south of the northern treeline along the Yenisei River (Stolbovoi and Savin 2002, Bartalev 2010, Bartalev *et al* 2011, Huttich *et al* 2014). Spruce begins to appear just north of the 16 °C July isotherm in the simulation, and dominates stands south of the 16.3 °C July isotherm that are more than 400 years old. Spruce in 200-year old simulated stands have a biovolume of 104 ± 78 m<sup>3</sup> ha<sup>-1</sup> (not shown). In younger stands (<200-years old), spruce appears as an admixture just north of the 16 °C July isotherm, where at least 600 GDD<sub>5</sub> are accumulated annually. This agrees well with observations of

100–200-year disturbance regimes (predominantly fire) that maintain younger, larch-dominated stands (Pautova 1976, Mitrofanov 1977, Deyeva 1985, 1987, Esper and Schweingruber 2004, Kharuk *et al* 2005, Kharuk *et al* 2006), and observations of spruce stands with an average biovolume of 100–125 m<sup>3</sup> ha<sup>-1</sup> at the northernmost range of spruce along the Yenisei River (Bartalev 2010), which is situated near the 16 °C July isotherm.

Although Monserud and Tchebakova (1996) examined the thermal requirements for the tundra, subalpine taiga, montane taiga, and dark-needled montane taiga in southern Siberia, the thermal limits for the ecotones are also likely to be valid for the northern treeline thermal gradient. They found that tundra generally exists in regions where the total thermal accumulation is less than 300 °C GDD<sub>5</sub>, sparse and subalpine vegetation is found between 300 and 550 °C GDD<sub>5</sub>, and dark taiga occurs in regions that acquire at least 750 °C GDD<sub>5</sub> during the growing season. The transitions between no arboreal vegetation and sparse larch stands occur in the simulation around the 300 °C GDD<sub>5</sub>. The stands, dominated by larch, just as in the subalpine taiga ecotone, become thicker and taller between 300 and 500 °C GDD<sub>5</sub>, at which point a small admixture of spruce (a dark needle-leaf conifer) begins to occur, with almost complete spruce and mixed dark taiga dominance south of the 16.3 °C July isotherm, which is approximately collocated with the 750 °C GDD<sub>5</sub> isoline. The model simulation appropriately reproduces the observed species distribution along a thermal gradient. Field observations from the northern treeline ecotone in Siberia reveal that individual

trees can establish few (Kharuk *et al* 2006) to tens of kilometers (MacDonald *et al* 2000) from the nearest tree stand. These observations facilitate the interpretation of fast (decades) colonization of the tundra upon warming in our simulations, which do not include a spatially-explicit seed dispersal subroutine.

Northward expansion of sparse larch stands into the tundra, and the increasing density and crown closure of what used to be sparse stands near the northern treeline have been observed in various regions of northern Siberia, with rates of treeline advancement of 3–10 m yr<sup>-1</sup> near Khatanga (Kharuk *et al* 2006, Sun *et al* 2011), 1–4 m yr<sup>-1</sup> in the Polar Urals (Devi *et al* 2008), 4–14 m yr<sup>-1</sup> in the Polar Urals (Kharuk and Fedotova 2003), and comparable rates at numerous sites between those two locations (Esper and Schweingruber 2004), with likely increase in colonization rate as climate warms and as the new young tree-line individuals reach reproductive maturity (Kharuk *et al* 2006) and are able to provide a more sheltered environment for establishment of new saplings. If the reproductive processes are temperature controlled, rapid advance of the northern treeline is likely (Grace *et al* 2002). Saplings that have established north of the 19th century treeline have experienced slow growth, often growing no more than 4 m tall in 50 years (Esper and Schweingruber 2004). SIBBORK also simulates slow growth of northernmost saplings, which reach 5.3 ± 1.0 m over the same time frame. Increasing crown closure has been observed near the historical northern treeline (Kharuk and Fedotova 2003, Kharuk *et al* 2006). SIBBORK appropriately simulates an increase in foliage density in trees located at the historical northern treeline following a period of warming.

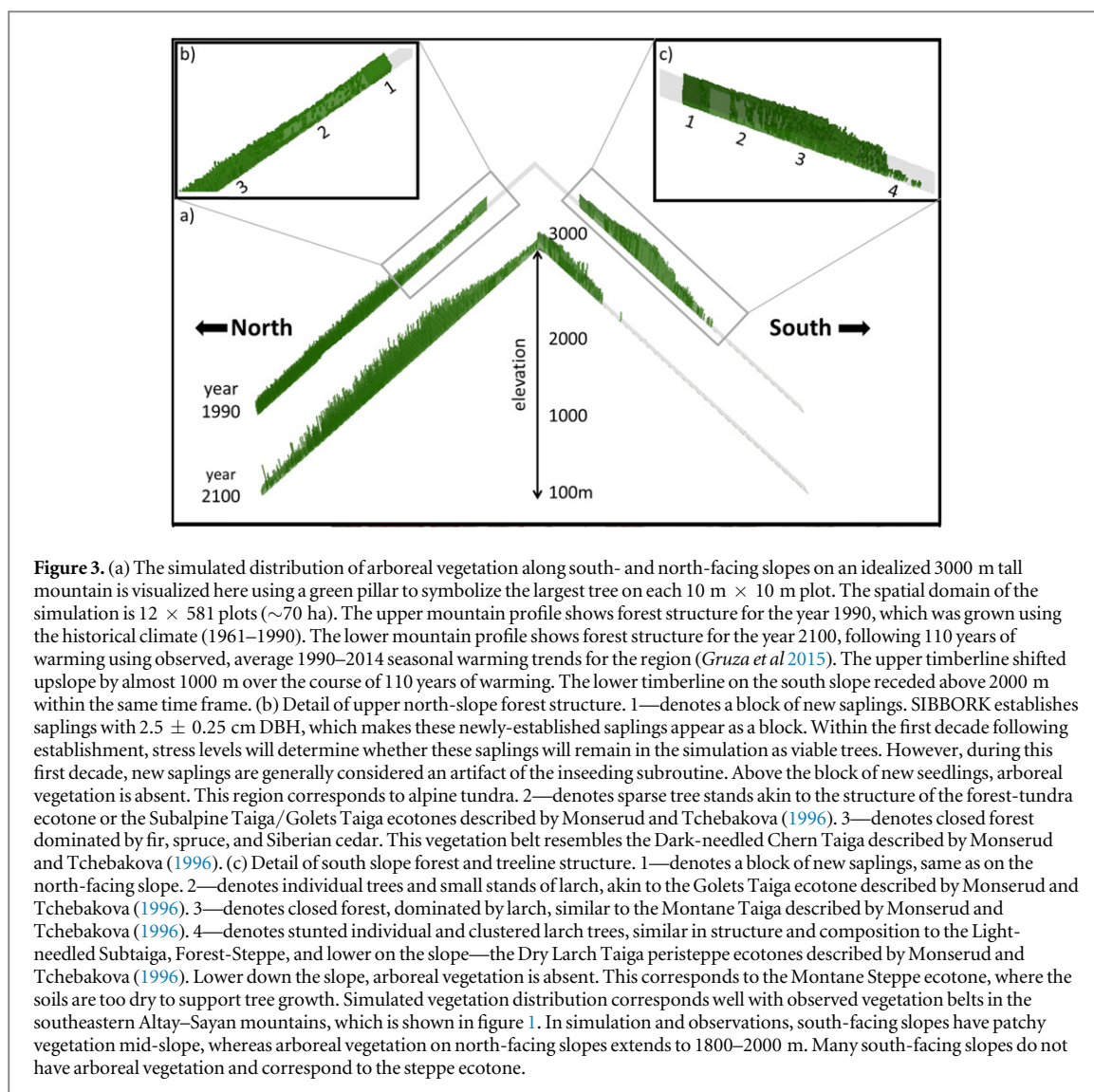
The mountains of southern Siberia stretch for over 10 650 00 km<sup>2</sup> and include the Altay–Sayan ranges, as well as the Zabaikal'e region to the south and east of Lake Baikal, where forests and forest-steppe cover 80% of the territory (Samoylova 1973). Along the southern boundary of the boreal forest, ribbons of forest appear predominantly on north-facing and upper slopes in the Alay–Sayan mountain region. The forest belt, thus, has a lower treeline limit on south-facing slopes dictated by soil moisture conditions, and an upper timberline on slopes of all aspects driven by temperature (Samoilova 1973, Dulamsuren *et al* 2005a).

In SIBBORK, we are able to monitor which environmental factor exerts the greatest limitation on growth of each individual tree. In the simulation, the trees along the upper treeline are most limited by insufficient growing degree days, whereas the growth of trees along the lower treeline on the south-facing slope is most severely limited by insufficient plant available water and too great of a fraction of growing season spent in drought, where soil moisture is below the wilting point.

Larch dominates both the lower and upper treeline on south-facing slopes, with occasional admixtures of

pine (*Pinus sylvestris*) and birch (*Betula spp.*) (Babushkina *et al* 2010). Stand density and tree height near and at the forest boundary are smaller than in the middle of the forest belt (Samoilova 1973), and our simulations appropriately reproduce this observed patchiness near the upper and lower treelines (figure 3). The larch stands at the lower treeline are stressed, and this boundary is likely to recede as temperatures warm without corresponding increases in precipitation (Dulamsuren *et al* 2009, 2011). A 300 m upward retreat of the lower treeline due to increased tree mortality was recently observed in the Altay mountains in just 6 years (Kharuk *et al* 2013b). Germino and colleagues found that higher sunlight, such as may be available at the upper or lower treelines on south-facing slopes, compared to north-facing slopes or flat terrain, in combination with warm temperatures and water stress, inhibit the growth of *Picea* and *Abies* saplings in montane regions (Germino *et al* 2002). These species are generally not found on south-facing slopes in the Altay–Sayan mountains, and in the Zabaikal'e region just to the east (figure 1). In our simulations, these species are appropriately absent from south-facing slopes, which are dominated by larch, with small patches of pine and birch (figure 3). Lorey's height for northern-aspect mid-slope forests in the simulation exhibit a range of 7–17 m (mean ± std: 9.9 ± 2.2 m), which compares well with observed heights in birch-fir-pine forests in the Khamar–Daban mountains of the Zabaikal'e region, just to the east of the Altay–Sayan complex (range: 7–14 m, mean ± std: 10.8 ± 3.6 m) in 40–60 year old stands (Onuchin 1986). Additionally, simulated forest biovolume on south- (range: 8–150 m<sup>3</sup> ha<sup>-1</sup>) and north-facing (range: 7–49 m<sup>3</sup> ha<sup>-1</sup> for 80-year old stands; 100–181 m<sup>3</sup> ha<sup>-1</sup> for 200-year old stands when plots with young saplings regenerating in recently-formed gaps with biomass of less than 1 kg/plot are excluded from calculation) slopes correspond well with observed biovolume in the Selingen range (range: N 100–175 m<sup>3</sup> ha<sup>-1</sup>; S sparse-150 m<sup>3</sup> ha<sup>-1</sup>; sparse denotes <100 m<sup>3</sup> ha<sup>-1</sup>, Bartalev 2010). Figure 3 represents the simulated species distribution along south- and north-facing slopes in the mountains of southern Siberia.

In the early 1990s, forests of the Krasnoyarsk region were assessed to be a weak sink for atmospheric carbon (Krankina and Dixon 1994), however, with increasing air temperatures not accompanied by any significant changes in precipitation in the southern part of this region, forest vegetation is likely to be stressed from temperature-induced drought, especially in southern Siberia (Allen *et al* 2010), and the increased mortality is likely to shift the role of these forests into sources of atmospheric carbon. As warming forces forests to recede higher uphill (migration of the lower timberline), but the upper timberline advances at a slower rate, there is the likelihood of significantly decreasing forest cover in this region. It has been



hypothesized that increasing PET demands as a result of increasing air temperatures accompanied by only meager, if any, increases in precipitation, will stress and decrease the productivity of the boreal forests in Siberia (Briffa *et al* 1998, Knorre *et al* 2006, Allen *et al* 2010), Europe (Dirnbock *et al* 2003), Canada (Hogg and Hurdle 1995, Ma *et al* 2012), and Alaska (Bonan and Shugart 1989, Barber *et al* 2000), and potentially result in biome shifts (Sitch *et al* 2008, Buermann *et al* 2014).

Regeneration and advancement of arboreal alpine vegetation in continental montane areas may be more sensitive to changes in the soil moisture than to the thermal regime (Holtmeier and Broll 2005), and as the climate in southern Siberia becomes warmer and drier, grasses may significantly outcompete tree saplings, especially on dry soils (Ivanova *et al* 2010). Others have forecast the rapid (decades to centuries) upslope migration of the lower and upper treelines (Tinner and Kaltenreider 2005), as well as the migration of the southern boreal forest boundary northward over the next few decades (Tchebakova *et al* 2009). The

upward retreat of the lower treeline on the south-facing slopes in the Altay–Sayan mountains has been observed in the last decade, most pronounced on south- and southeast-facing slopes, where forest receded upslope by over 200 m in just 7 years (Kharuk *et al* 2013b). Similarly, increased drought-induced mortality of birch was observed in the forest-steppe region on south-facing slopes in Transbaikalia mountains to the east of Lake Baikal and only a few hundred kilometers east of the simulated region (Kharuk *et al* 2013a), effectively shifting the lower treeline upslope by 22–40 m within the first decade of the 21st century. Increased drought-induced mortality has been observed in aspen (*Populus tremuloides*) stands in the Rocky Mountains in the US (Andregg *et al* 2013) and Canada (Hogg *et al* 2008) with similar rates of retreat.

With regards to the upper timberline, a shift of 160 m since the 1890s has been noted (Istomov 2005), which expands on the shift of 100 m observed in the Western Sayan Mountains between 1976 and 2000 (Kharuk *et al* 2010a), with the greatest regeneration

above treeline observed on north- and northwest-facing slopes. Other field studies report similar rates of upward timberline migration in the latter half of the 20th century along the southern boundary of the boreal forest in Russia ( $63 \pm 37$  m in 42 years, Kharuk *et al* 2010b) and Scandinavia ( $165 \pm 20$  m in 50 years; Kullman 2000, 2001, 2004). In addition to the treeline shifts, there are also shifts of species ranges along the slopes, with SIBBORK appropriately reproducing the upward shift in Siberian cedar and fir populations, the beginnings of which have already been observed in Altay (Moiseev 2002). Shifts in optimum elevation of plant species, which focuses on the center of distribution range, rather than just the upper or lower montane limit, of  $2.94 \pm 1.09$  m yr<sup>-1</sup> have been observed in the mountains of western Europe since 1971 (Lenoir *et al* 2008), showing that the observed warming with no appreciable change in precipitation regime affects the entire range of species, and not just the range boundaries. Furthermore, increased stand density and crown closure has been observed at the upper alpine treeline, sometimes in addition to, and sometimes in lieu of pronounced upslope timberline advance (Kullman 2001). This change in stand structure has also been appropriately simulated by SIBBORK.

Previous modeling studies have suggested that a significant loss of forest is likely to occur in mountain areas with a +2 °C change in average annual temperature in Europe (Dirnbock *et al* 2003) and North America (Chapin *et al* 2004), especially when the precipitation regime does not concurrently change or becomes drier. The +2 °C also appears as an important threshold for the substantial decrease in forest-covered area along the simulated mountain slopes of southern Siberia in our study. The area occupied by pine-larch forests in Tuva (southern Sayan) has decreased by 70% since 1990, due to increased tree mortality and fire activity, and decreased regeneration post disturbance (Buryak *et al* 2009, Ivanova *et al* 2010). Retreat of forests from the simulated southeastern Altay–Sayan region (Tuva basin) has been forecast based on observations of warming and drying conditions in the region (Tchebakova 2006). The replacement of forest-steppe with steppe at the lower treeline has already been observed following fire and permafrost retreat (Monserud and Tchebakova 1996). This ecotone shift is likely to persist with warming and an increase in drought mortality and fire frequency in the coming decades, and is simulated appropriately by SIBBORK, even though the simulation does not include explicit parameterizations of disturbances and permafrost.

Numerous environmental factors that may affect treeline location, such as permafrost, winds, snowpack, and seed dispersal, are not included in this version of SIBBORK, so it is entirely possible that the northern treeline, which appears to be a function of air temperature in the simulation, may have completely

other drivers. The model essentially simulates the theoretical treeline, based on environmental conditions, and as those conditions change, the colonization of areas that become favorable or retreat from regions that become no longer favorable may occur significantly faster than observed in nature, as the model does not address the increased susceptibility of young saplings to stress, compared to mature individuals, and does not explicitly represent seed dispersal.

Crawford and colleagues suggested that the northern treeline in Siberia may actually retreat south with warming due to increased soil and permafrost melt resulting in paludification (Crawford *et al* 2003). Since permafrost is not included in the current version of SIBBORK, the possibility of this feedback is not represented in our simulations. Increases in stand density and canopy closure have been observed at the upper timberline in southern Siberia (Kharuk *et al* 2010a, b). In SIBBORK, however, the maximum stand density limit is static and specified in the model driver at the plot level. Although the simulation can contain less than the maximum number of stems per plot due to unfavorable conditions, the possibility of future environmental conditions facilitating denser stands may not be sufficiently accommodated by the static limit on maximum stand density. Wind is an important factor in maintaining not only the northern forest boundary, but also the upper timberline (Resler *et al* 2005, Kullman and Kjallgren 2006), and lack of parameterization for this factor may result in establishment of saplings in sheltered areas on the terrain not due to shelter from the wind, but rather due to decreased incident radiation and, therefore, PET demands, again, missing the exact combination of driving factors for the location of the treeline, but getting the gist of it with the limited environmental factors that are explicitly resolved in the simulation.

Our model does not consider the differences in allometric relationships observed between trees within a forest compared to those on the exposed treeline edge (Hogg and Hurdle 1995). It is assumed that the environmental conditions along the treeline edge will differ from those within the closed canopy, and the growth of treeline trees will be adjusted in the simulation based on the stress those individuals experience. Kharuk and his colleagues (Kharuk *et al* 2013a) have found that in areas with increased tree mortality from temperature-induced drought stress, vegetation underlain by patches of permafrost was not adversely affected by increased temperatures, because the thawing of the permafrost active layer provided sufficient soil moisture throughout the growing season. Our simulation can be improved to reflect this heterogeneous response using a spatially-explicit parameterization for permafrost and associated soil processes. Additionally, with more local precipitation data available from field sites in southern Siberia (Monserud and Tchebakova 1996, Kharuk *et al* 2009, 2010c, 2013b), it will be possible to adjust

precipitation by elevation and slope aspect, which would improve the resolution of local environmental conditions and the associated vegetation response to changes in these conditions. Disturbances, such as wildfire and insect outbreaks, are not included in this version of the SIBBORK model. An increase in the frequency and extent of these disturbances has already been observed across the Eurasian boreal forest (Buermann *et al* 2014), and their incidence is expected to continue to increase. Presence of disturbance shifts the forest age structure to a younger forest, with greater dominance by pioneer species, such as birch and pine. Repeated fires inhibit regeneration of arboreal species, promote dominance of grass species (Kukavskaya *et al* 2013), and expedite the shift from a forest to a grassland or steppe biome (Kukavskaya *et al* 2014).

Our investigation extends and supports the forecasts by other modeling studies (Scholze *et al* 2006, Sitch *et al* 2008, Tchebakova *et al* 2009). More specifically, we extend the work of Tchebakova and her colleagues (Tchebakova *et al* 2009), which forecast changes to Siberian vegetation by 2020, and drastic changes in forest structure and the shift from the boreal forest to the steppe biome for the southern half of the Siberian boreal forest by 2080. Our model SIBBORK forecasts the same biome shift within the same timeframe, even though the model structure and input parameters for our SIBBORK model differs significantly from the static climate–vegetation equilibrium assumption of the Siberian BioClimatic Model SiBCliM (Tchebakova *et al* 2009). However, as SIBBORK has a much higher spatial resolution than SiBCliM, we are able to resolve that it is primarily the forests on south-facing slopes that will be affected by drought-induced mortality, whereas forests on north-facing slopes and on slopes that are windward to moisture-carrying airmasses (west-facing along Yenisei Kryazh, northwest-facing Altay), will change in structure and composition but will not be replaced by the steppe biome in that time frame. Montane ecosystems are considered particularly vulnerable to climate change (Fischlin *et al* 2007). Tchebakova and her colleagues also developed and applied the Sayan Mountain model to predict the potential vegetation in the mountainous regions of southern Siberia, with  $0.17^\circ \times 0.17^\circ$  spatial resolution. Our investigation extends their work through application of our model toward understanding vegetation shifts in the southern mountains of Siberia at a higher spatial resolution ( $10\text{ m} \times 10\text{ m} \times 1\text{ m}$ ). Additionally, SIBBORK is able to simulate three-dimensional terrain and the distribution of vegetation along topography-associated environmental gradients, as well as changes in environmental conditions over time. Field observations have shown that the changes in forest structure and treeline location strongly depend on topographic features (Kharuk *et al* 2010b). SIBBORK offers a unique understanding of the heterogeneous response of vegetation in a compressed transition zone along an

elevational gradient to spatially and temporally heterogeneous changes in environmental conditions.

## Conclusions

The SIBBORK gap dynamics model keeps track of the establishment, growth, and mortality of millions of trees across tens of hectares of artificial or real terrain, and simulates heterogeneous response of vegetation to the conditions on the landscape. SIBBORK appropriately reproduces transition zone vegetation, with the structure and composition closely approximating the observed forests at the northern and southern boreal forest limits, including the upper and lower elevational treelines in the complex terrain of southern Siberian mountains. The ability to appropriately simulate vegetation distribution in central Siberia and at the transition zones, not only provides a rigorous test of the model's capabilities, but also helps us understand the potential response of these ecosystems with continued warming. Alarming, the loss of forest at the southern treeline in the simulation far exceeds the rate and amount of forest gained at the northern and upper elevational treelines, however, this is consistent with observations from Siberia, Scandinavia, and North America. A spatially-explicit gap dynamics model that is able to simulate forest structure and composition across tens of hectares provides a strong platform for understanding what near-future changes in forest vegetation and the associated carbon cycling are likely in different regions of the Siberian boreal forest.

Observed warming trends in the Siberian boreal forest exceed predicted trends for this time period (IPCC 2013, Gruza *et al* 2015). It is likely that not only will the forest vegetation be responding to larger climate changes than predicted, especially in mountainous southern Siberia (Tchebakova 2006), but also that the rate of response may be faster than anticipated. Boreal forests in Siberia have experienced significant decline, both in the wood stock ( $\text{m}^3\text{ ha}^{-1}$ ) and area covered since 1980s (Shvidenko and Nilsson 2002). The observed increase in wildfires and insect outbreaks in recent decades, which has resulted in the dieback of millions of hectares of forest in southern Siberia (Soja *et al* 2007) makes this investigation particularly pertinent. Furthermore, Hansen and colleagues have found that during the first decade of the 21st century, the ratio of forest loss to forest gain was 2.1 for boreal forests, with Russia experiencing greatest forest loss compared to the rest of the globe (Hansen *et al* 2013). This forest dieback has occurred with less than  $+2^\circ\text{C}$  increase in annual average temperature, demonstrating that the boreal forest ecosystems may be much more sensitive to warming than previously anticipated.

## Acknowledgments

The authors are thankful to Mr Whittlesey for programming consultation and helpful comments on the earlier versions of this manuscript, and to Dr C Huttig for providing the dataset Hybrid Biomass and Land Cover Map for Central Siberia (Bartalev, 2010), portions of which were used in model validation and generation of figure 1 and figures 2(a) and (d) in this manuscript. We also express our gratitude to the two anonymous reviewers, whose comments and suggestions helped improve the manuscript.

## References

- Aksenov D *et al* 2002 *Atlas of Russia's Intact Forest Landscapes* (Russia: Global Forest Watch) p 72
- Allen C D *et al* 2010 A global overview of drought and heat-induced tree mortality reveals emerging climate change risks for forests *Forest Ecol. Manage.* **259** 660–84
- Anderegg W R, Kane J M and Anderegg L D 2013 Consequences of widespread tree mortality triggered by drought and temperature stress *Nat. Clim. Change* **3** 30–6
- Anuchin N P 1986 *Forest Encyclopedia* vol II (Moscow, USSR: Soviet Encyclopedia) pp 455–7 (in Russian)
- Babushkina E A, Knorre A A, Vaganov E A and Bryukhanova M V 2010 Transformation of climatic response in radial increment of trees depending on topo-ecological conditions of their occurrence *Geogr. Nat. Resour.* **32** 80–6 (in Russian)
- Barber V A, Juday G P and Finney B P 2000 Reduced growth of Alaskan white spruce in the twentieth century from temperature-induced drought stress *Nature* **405** 668–73
- Bartalev S 2010 Hybrid biomass and land cover map for central Siberia ZAPAS: *Assessment and Monitoring of Forest Resources in the Framework of EU-Russia Space Dialogue* (<http://zapas.uni-jena.de>)
- Bartalev S A, Egorov V A, Ershov D V, Isaev A S, Loupian E A, Plotnikov D E and Uvarov I A 2011 The vegetation mapping over Russia using MODIS spectroradiometer satellite data *Contemporary Earth Remote Sensing From Space* **8** 285–302 (in Russian)
- Bauweraerts I, Ameye M, Wertin T M, McGuire M A, Teskey R O and Steppe K 2014 Water availability is the decisive factor for the growth of two tree species in the occurrence of consecutive heat waves *Agric. Forest Meteorol.* **189** 19–29
- Betts R A 2000 Offset of the potential carbon sink from boreal forestation by decreases in surface albedo *Nature* **408** 187–90
- Bonan G B 2008 Forests and climate change: forcings, feedbacks, and the climate benefits of forests *Science* **320** 1444–9
- Bonan G B and Shugart H H 1989 Environmental factors and ecological processes in boreal forests *Annu. Rev. Ecol. Systematics* **20** 1–28
- Brazhnik K and Shugart H H 2015 SIBBORK: new spatially-explicit gap model for Boreal forest in 3-dimensional terrain *Ecol. Modelling* at press
- Briffa K R, Schweingruber F H, Jones P D, Osborn T J, Shiyatov S G and Vaganov E A 1998 Reduced sensitivity of recent tree-growth to temperature at high northern latitudes *Nature* **391** 678–82
- Buermann W, Parida B, Jung M, MacDonald G M, Tucker C J and Reichstein M 2014 Recent shift in Eurasian boreal forest greening response may be associated with warmer and drier summers *Geophys. Res. Lett.* **41** 1995–2002
- Buryak L V, Kalenskaya O P, Tolmachev A V and Yankovskii R V 2009 Forest fires and their after-effects in the Sushensky Bor National Park *Lesnoe Khozyaistvo* **3** 37–9
- Chapin F S III, Callaghan T V, Bergeron Y, Fukuda M, Johnstone J F, Juday G and Zimov S A 2004 Global change and the boreal forest: thresholds, shifting states or gradual change? *AMBIO: J. Hum. Environ.* **33** 361–5
- Chlachula J and Sukhova M G 2011 Regional manifestations of present climate change in the Altai, Siberia *Proc. ICEEA 2nd Int. Conf. on Environmental Engineering and Applications (Shanghai, China, 19–21 August 2011)* (*Int. Proc. of Chemical, Biological and Environmental Engineering and Applications* vol 17) ed Li Xuan pp 134–9
- Chytrý M, Danihelka J, Kubešová S, Lustyk P, Ermakov N, Hájek M and Pišút I 2008 Diversity of forest vegetation across a strong gradient of climatic continentality: Western Sayan mountains, southern Siberia *Plant Ecol.* **196** 61–83
- Clark J S 1998 Why trees migrate so fast: confronting theory with dispersal biology and the paleorecord *Am. Naturalist* **152** 204–24
- Crawford R M M, Jeffrey C E and Rees W G 2003 Paludification and forest retreat in northern oceanic environments *Ann. Bot.* **91** 213–26
- Devi N, Hagedorn F, Moiseev P, Bugmann H, Shiyatov S, Mazepa V and Rigling A 2008 Expanding forests and changing growth forms of Siberian larch at the Polar Urals treeline during the 20th century *Glob. Change Biol.* **14** 1581–91
- Deyeva N M 1985 Biomass amount in forest communities of the north-western part of Putorana Plateau *Russ. Bot. J.* **70** 54–8
- Deyeva N M 1987 Vegetative mass structure in forest phytocoenoses of the northern-western part of Plateau Putorana *Botanicheskii Zh. (Russ. Bot. J.)* **72** 505–11 (in Russian)
- Dirnböck T, Dullinger S and Grabherr G 2003 A regional impact assessment of climate and land-use change on alpine vegetation *J. Biogeogr.* **30** 401–17
- Dulamsuren C, Hauck M and Mühlenberg M 2005a Vegetation at the taiga forest–steppe borderline in the western Khentey Mountains, northern Mongolia *Annales Botanici Fennici* (Finland: Finnish Zoological and Botanical Publishing Board) pp 411–26
- Dulamsuren C, Hauck M and Mühlenberg M 2005b Ground vegetation in the Mongolian taiga forest–steppe ecotone does not offer evidence for the human origin of grasslands *Appl. Vegetation Sci.* **8** 149–54
- Dulamsuren C, Hauck M, Bader M, Osokhjargal D, Oyungerel S, Nyambayar S and Leuschner C 2009 Water relations and photosynthetic performance in *Larix sibirica* growing in the forest–steppe ecotone of northern Mongolia *Tree Physiol.* **29** 99–110
- Dulamsuren C, Hauck M, Leuschner H H and Leuschner C 2011 Climate response of tree-ring width in *Larix sibirica* growing in the drought-stressed forest–steppe ecotone of northern Mongolia *Ann. Forest Sci.* **68** 275–82
- Esper J and Schweingruber F H 2004 Large-scale treeline changes recorded in Siberia *Geophys. Res. Lett.* **31** L06202
- ESRI 2012 *ESRI ArcGIS version 10.1* ESRI, Redlands, CA, USA
- Fischlin A *et al* 2007 Eco-systems, their properties, goods and services *Climate Change 2007: Impacts, Adaptation and Vulnerability Contribution of Working Group II to the Fourth Assessment Report of the Intergovernmental Panel on Climate Change* ed M L Parry *et al* (Cambridge: Cambridge University Press) pp 211–72
- Fu P and Rich P M 2002 A geometric solar radiation model with applications in agriculture and forestry *Comput. Electron. Agric.* **37** 25–35
- Germino M J, Smith W K and Resor A C 2002 Conifer seedling distribution and survival in an alpine–treeline ecotone *Plant Ecol.* **162** 157–68
- Gorchakovskiy P L and Shiyatov S G 1978 The upper forest limit in the mountains of the boreal zone of the USSR *Arct. Alpine Res.* **10** 349–63
- Gower S T, Krankina O, Olson R J, Apps M, Linder S and Wang C 2001 Net primary production and carbon allocation patterns of boreal forest ecosystems *Ecol. Appl.* **11** 1395–411
- Grace J, Berninger F and Nagy L 2002 Impacts of climate change on the tree line *Ann. Bot.* **90** 537–44
- Grimm V and Railsback S F 2005 *Individual-Based Modeling and Ecology* (Princeton, NJ: Princeton University Press)

- Groisman P Y and Gutman G 2013 *Environmental Changes in Siberia: Regional Changes and their Global Consequences* (Dordrecht: Springer) p 357
- Gruza G V *et al* 2015 A Report on Climate Features on the Territory of the Russian Federation in 2014 (<http://meteorf.ru>) (in Russian)
- Hansen M C, Potapov P V, Moore R, Hancher M, Turubanova S A, Tyukavina A and Townshend J R G 2013 High-resolution global maps of 21st-century forest cover change *Science* **342** 850–3
- Hogg E H, Brandt J P and Michaelian M 2008 Impacts of a regional drought on the productivity, dieback, and biomass of western Canadian aspen forests *Can. J. Forest Res.* **38** 1373–84
- Hogg E H and Hurdle P A 1995 *The Aspen Parkland in Western Canada: A Dry-Climate Analogue for the Future Boreal Forest?* (Netherlands: Springer) pp 391–400
- Hollinger D Y, Ollinger S V, Richardson A D, Meyers T P, Dail D B, Martin M E and Verma S B 2010 Albedo estimates for land surface models and support for a new paradigm based on foliage nitrogen concentration *Glob. Change Biol.* **16** 696–710
- Holtmeier F K and Broll G 2005 Sensitivity and response of northern hemisphere altitudinal and polar treelines to environmental change at landscape and local scales *Glob. Ecol. Biogeogr.* **14** 395–410
- Holtmeier F K and Broll G 2010 Wind as an ecological agent at treelines in North America, the Alps, and the European Subarctic *Phys. Geogr.* **31** 203–33
- Houghton R A, Butman D, Bunn A G, Krankina O N, Schlesinger P and Stone T A 2007 Mapping Russian forest biomass with data from satellites and forest inventories *Environ. Res. Lett.* **2** 045032
- Huth A, Ditzer T and Bossel H 1998 *The Rain Forest Growth Model FORMIX3: Model Description and Analysis of Forest Growth and Logging Scenarios for the Deramakot Forest Reserve (Malaysia)* (Göttingen: Erich Goltze)
- Hüttich C, Korets M, Bartalev S, Zharko V, Schepaschenko D, Shvidenko A and Schmillius C 2014 Exploiting growing stock volume maps for large scale forest resource assessment: cross-comparisons of ASAR and PALSAR-based GSV estimates with forest inventory in central Siberia *Forests* **5** 1753–76
- IPCC 2013 *Climate Change 2013: The Physical Science Basis. Contribution of Working Group I to the Fifth Assessment Report of the Intergovernmental Panel on Climate Change* ed T G Stocker *et al* (Cambridge: Cambridge University Press) p 1535
- Isachenko A G 1985 Map of biological productivity *Landshafts of USSR* (Leningrad, USSR: Leningrad University Press) p 320
- Isachenko A G, Shlyapnikov A A, Robozertseva O D and Filipetskaya A Z 1988 *The Landscape Map of the USSR* (Moscow, USSR: General Ministry of Geodesy and Cartography of the USSR) (in Russian)
- Ivanova G A, Ivanov V A, Kukavskaya E A and Soja A J 2010 The frequency of forest fires in scots pine stands of Tuva, Russia *Environ. Res. Lett.* **5** 015002
- Istomov S V 2005 The current dynamics of the upper treeline in West Sayan mountains, actual questions of research and protection of the plant world *Trans. Reserve—Tigiretky* 211–4
- Kammer P M, Schöb C and Choler P 2007 Increasing species richness on mountain summits: upward migration due to anthropogenic climate change or re-colonisation? *J. Vegetation Sci.* **18** 301–6
- Kharuk V I, Dvinskaya M L and Ranson K J 2005 The spatiotemporal pattern of fires in northern Taiga larch forests of central Siberia *Russ. J. Ecol.* **36** 302–11
- Kharuk V I and Fedotova E V 2003 Forest-tundra ecotone dynamics *Arctic Environment Variability in the Context of Global Change* pp 281–99
- Kharuk V I, Im S T and Dvinskaya M L 2010a Forest-tundra ecotone response to climate change in the Western Sayan Mountains, Siberia *Scand. J. Forest Res.* **25** 224–33
- Kharuk V I, Im S T, Dvinskaya M L and Ranson K J 2010c Climate-induced mountain tree-line evolution in southern Siberia *Scand. J. Forest Res.* **25** 446–54
- Kharuk V I, Im S T, Oskorbin P A, Petrov I A and Ranson K J 2013b Siberian pine decline and mortality in southern Siberian mountains *Forest Ecol. Manage.* **310** 312–20
- Kharuk V I, Ranson K J, Im S T and Dvinskaya M L 2009 Response of *Pinus sibirica* and *Larix sibirica* to climate change in southern Siberian alpine forest-tundra ecotone *Scand. J. Forest Res.* **24** 130–9
- Kharuk V I, Ranson K J, Im S T and Naurzbaev M M 2006 Forest-tundra larch forests and climatic trends *Russ. J. Ecol.* **37** 291–8
- Kharuk V I, Ranson K J, Im S T and Vdovin A S 2010b Spatial distribution and temporal dynamics of high-elevation forest stands in southern Siberia *Glob. Ecol. Biogeogr.* **19** 822–30
- Kharuk V I, Ranson K J, Oskorbin P A, Im S T and Dvinskaya M L 2013a Climate induced birch mortality in Trans-Baikal lake region, Siberia *Forest Ecol. Manage.* **289** 385–92
- Knorre A A, Kirdeyanov A V and Vaganov E A 2006 Climatically induced interannual variability in aboveground production in forest-tundra and northern taiga of central Siberia *Oecologia* **147** 86–95
- Kolosova L N (ed) 1982 *Geographic Atlas for School Teachers* 4th edn (Moscow, USSR: General Ministry of Geodesy and Cartography of the USSR) (in Russian)
- Kondakov Y L 2002 Massive outbreaks of Siberian silkmoth in forests of Krasnoyarsky Krai *Entomological Investigations in Siberia* 2 25–74 (in Russian)
- Kotlyakov V and Khromova T 2002 Maps of permafrost and ground ice ed V Stolbovoi and I McCallum *Land Resources of Russia* (Laxenburg, Austria: International Institute for Applied Systems Analysis and the Russian Academy of Science) (CD-ROM. Distributed by the National Snow and Ice Data Center, Boulder)
- Krankina O N and Dixon R K 1994 Forest management options to conserve and sequester terrestrial carbon in the Russian federation *World Resour. Rev.* **6** 88–101
- Krankina O N, Houghton R A, Harmon M E, Hogg E H, Butman D, Yatskov M and Spycher G 2005 Effects of climate, disturbance, and species on forest biomass across Russia *Can. J. Forest Res.* **35** 2281–93
- Kryuchkov V V 1973 The effect of permafrost on the northern tree line *Permafrost: Proc. 2nd Int. Conf. (USSR Contribution)* (Washington, DC: National Academy of Science) pp 136–8
- Kukavskaya E, Buryak L V, Conard S G, Petkov A, Barrett K, Kalenskaya O P and Ivanova G 2014 Effects of repeated fires in the forest ecosystems of the Zabaikalye region, Southern Siberia *AGU Fall Meeting Abstracts* vol 1 pp 0456
- Kukavskaya E A, Buryak L V, Ivanova G A, Conard S G, Kalenskaya O P, Zhila S V and McRae D J 2013 Influence of logging on the effects of wildfire in Siberia *Environ. Res. Lett.* **8** 045034
- Kulagin A Y, Davydychev A N and Zaitsev G A 2006 Specific features of the growth of Siberian spruce (*Picea obovata* Ledeb.) at early stages of ontogeny in broadleaf-conifer forests of the Ufa plateau *Russ. J. Ecol.* **37** 66–9
- Kullman L 2000 Tree-limit rise and recent warming: a geoecological case study from the Swedish Scandes *Nor. Geografisk Tidsskr.* **54** 49–59
- Kullman L 2001 20th century climate warming and tree-limit rise in the southern Scandes of Sweden *Ambio: J. Hum. Environ.* **30** 72–80
- Kullman L 2004 A face of global warming—‘ice birches’ and a changing alpine plant cover *Geoöko* **25** 181–202
- Kullman L and Kjällgren L 2006 Holocene pine tree-line evolution in the Swedish Scandes: recent tree-line rise and climate change in a long-term perspective *Boreas* **35** 159–68
- Kuusinen N, Tomppo E, Shuai Y and Berninger F 2014 Effects of forest age on albedo in boreal forests estimated from MODIS and Landsat albedo retrievals *Remote Sens. Environ.* **145** 145–53



- Lenoir J, Gégout J C, Marquet P A, De Ruffray P and Brisse H 2008 A significant upward shift in plant species optimum elevation during the 20th century *Science* **320** 1768–71
- MacDonald G M *et al* 2000 Holocene treeline history and climate change across northern Eurasia *Quat. Res.* **53** 302–11
- Malysheva N V 1993 Forest density map ed N M Kiselyova *Ecological Atlas of Russia (2002)* (St. Petersburg, Russia: Karta Publishing House)
- Ma Z, Peng C, Zhu Q, Chen H, Yu G, Li W *et al* 2012 Regional drought-induced reduction in the biomass carbon sink of Canada's boreal forests *Proc. Natl Acad. Sci. USA* **109** 2423–7
- METI and NASA 2011 *Release Version 2 ASTER Global DEM* US Geological Survey/ASA LP DAAC
- Mitrofanov D P 1977 *Chemical Composition of Forest Plants in Siberia* (Novosibirsk, USSR: Nauka) pp 120 (in Russian)
- Moiseev P A 2002 Effect of climatic changes on radial increment and age structure formation in high-mountain larch forests of the Kuznetsk Ala Tau *Russ. J. Ecol.* **33** 7–13
- Monserud R A and Tchebakova N M 1996 A vegetation model for the Sayan Mountains, southern Siberia *Can. J. Forest Res.* **26** 1055–68
- National Climate Data Center (NCDC) 2005a *Global Synoptic Climatology Network C the former USSR Version 1.0* (Asheville, NC: NOAA National Climatic Data Center)
- National Climate Data Center (NCDC) 2005b *Daily and Sub-Daily Precipitation for the Former USSR Version 1.0* (Asheville, NC: NOAA National Climatic Data Center)
- Onuchin V S 1962 Several morphological features of Siberian larch in Tuva *Larch: Compilation* vol 29 (Krasnoyarsk: STI) pp 22–35 (in Russian)
- Ovchinnikov D V and Vaganov E A 1999 *Dendrochronological Characteristics of Larix Sibirica: I. At the Upper Treeline in Mountain Altai* vol 6 (Moscow: Nauka) pp 145–52 (in Russian)
- Pastor J and Post W M 1986 Influence of climate, soil moisture, and succession on forest carbon and nitrogen cycles *Biogeochemistry* **2** 3–27
- Pautova V N 1976 Aboveground plant mass and transpiration of some communities in forest-tundra zone *Trans. Limnological Institute of SO AN USSR* **22** 92–128 (in Russian)
- Pielke R A and Vidale P L 1995 The boreal forest and the polar front *J. Geophys. Res.: Atmos. (1984–2012)* **100** 25755–8
- Polikarpov N P, Chebakova N M and Nazimova D I 1986 *Klimat i gornye lesa Sibiri (Climate and mountain forests of Siberia)* (Novosibirsk, USSR: Nauka)
- Rakovskaya E M and Davydova M I 1990 *Physical Geography of USSR*, v2. (Moscow, USSR: Akademiya)
- Resler L M, Butler D R and Malanson G P 2005 Topographic shelter and conifer establishment and mortality in an alpine environment, Glacier National Park, Montana *Phys. Geogr.* **26** 112–25
- Samoilova G S 1973 *Types of Landscapes in Mountains of Southern Siberia* ed M P Neklyudova (Moscow, USSR: Moscow State University Press) (in Russian)
- Scholze M, Knorr W, Arnell N W and Prentice I C 2006 A climate-change risk analysis for world ecosystems *Proc. Natl Acad. Sci. USA* **103** 13116–20
- Sedel'nikov V P 1979 *Flora and Vegetation of High-Mountain Areas in the Kuznetsk Altay* (Novosibirsk, USSR: Nauka) (in Russian)
- Shvidenko A and Nilsson S 2002 Dynamics of Russian forests and the carbon budget in 1961–1998: an assessment based on long-term forest inventory data *Clim. Change* **55** 5–37
- Shvidenko A Z, Schepaschenko D G, Nilsson C and Buluy Y I 2006 *Tables and Models of Growth and Productivity of Forests of Major Forest Forming Species of Northern Eurasia (Standard and Reference Materials)* Ministry of Natural Resources of the Russian Federation, Moscow, Russia
- Sitch S, Huntingford C, Gedney N, Levy P E, Lomas M, Piao S L and Woodward F I 2008 Evaluation of the terrestrial carbon cycle, future plant geography and climate-carbon cycle feedbacks using five dynamic global vegetation models (DGVMs) *Glob. Change Biol.* **14** 2015–39
- Soja A J, Tchebakova N M, French N H, Flannigan M D, Shugart H H, Stocks B J and Stackhouse P W 2007 Climate-induced boreal forest change: predictions versus current observations *Glob. Planet. Change* **56** 274–96
- Stevens G C and Fox J F 1991 The causes of treeline *Annu. Rev. Ecol. Systematics* **22** 177–91
- Stolbovoi V and Savin I 2002 Maps of soil characteristics ed V Stolbovoi and I McCallum *Land resources of Russia* (Laxenburg, Austria: International Institute for Applied Systems Analysis and the Russian Academy of Science) (CD-ROM. Distributed by the National Snow and Ice Data Center, Boulder)
- Strauss J, Schirrmeyer L, Grosse G, Wetterich S, Ulrich M, Herzsich U and Hubberten H-W 2013 The deep permafrost carbon pool of the yedoma region in Siberia and Alaska *Geophys. Res. Lett.* **40** 6165–70
- Sun G, Ranson K J, Kharuk V I, Im S T and Naurzbaev M M 2011 Characterization and monitoring of tundra-taiga transition zone with multi-sensor satellite data *Eurasian Arctic Land Cover and Land Use in a Changing Climate* (Berlin: Springer) pp 53–77
- Tchebakova N M 2006 *Possible Transformation of Vegetation Cover in Siberia for Different Climate Change Scenarios* (in Russian)
- Tchebakova N M, Parfenova E and Soja A J 2009 The effects of climate, permafrost and fire on vegetation change in Siberia in a changing climate *Environ. Res. Lett.* **4** 045013
- Timoshok E E, Timoshok E N and Skorokhodov S N 2014 Ecology of Siberian stone pine (*Pinus sibirica* Du Tour) and Siberian larch (*Larix sibirica* Ledeb.) in the Altai mountain glacial basins *Russ. J. Ecol.* **45** 194–200
- Tinner W and Kaltenrieder P 2005 Rapid responses of high-mountain vegetation to early Holocene environmental changes in the Swiss Alps *J. Ecol.* **93** 936–47
- Urban D L 1990 *A Versatile Model to Simulate forest Pattern: A User's Guide to ZELIG Version 1.0* (Charlottesville, VA: University of Virginia)
- Wilmking M, Juday G P, Barber V A and Zald H S 2004 Recent climate warming forces contrasting growth responses of white spruce at treeline in Alaska through temperature thresholds *Glob. Change Biol.* **10** 1724–36