

LA-UR-13-22770

Approved for public release; distribution is unlimited.

Title: 2012 Update to the Site Discharge Pollution Prevention Plan, Revision
1 Los Alamos National Laboratory NPDES Permit No. NM0030759
LA-UR-13-22770 May 1, 2013 Overview

Author(s): Veenis, Steven J.

Intended for: Individual Permit Pollution Prevention Team, Public, EPA, NMED
Report
Environmental Programs

Issued: 2015-04-15 (rev.5)

Disclaimer:

Los Alamos National Laboratory, an affirmative action/equal opportunity employer, is operated by the Los Alamos National Security, LLC for the National Nuclear Security Administration of the U.S. Department of Energy under contract DE-AC52-06NA25396. By approving this article, the publisher recognizes that the U.S. Government retains nonexclusive, royalty-free license to publish or reproduce the published form of this contribution, or to allow others to do so, for U.S. Government purposes. Los Alamos National Laboratory requests that the publisher identify this article as work performed under the auspices of the U.S. Department of Energy. Los Alamos National Laboratory strongly supports academic freedom and a researcher's right to publish; as an institution, however, the Laboratory does not endorse the viewpoint of a publication or guarantee its technical correctness.

LA-UR-13-22770

Approved for public release; distribution is unlimited.

Title: 2012 Update to the Site Discharge Pollution Prevention Plan, Revision 1 Los Alamos National Laboratory NPDES Permit No. NM0030759
LA-UR-13-22770 May 1, 2013 Overview

Author(s): Veenis, Steven J.

Intended for: Individual Permit Pollution Prevention Team, Public, EPA, NMED

Issued: 2013-05-02 (Rev.5)



Disclaimer:

Los Alamos National Laboratory, an affirmative action/equal opportunity employer, is operated by the Los Alamos National Security, LLC for the National Nuclear Security Administration of the U.S. Department of Energy under contract DE-AC52-06NA25396. By approving this article, the publisher recognizes that the U.S. Government retains nonexclusive, royalty-free license to publish or reproduce the published form of this contribution, or to allow others to do so, for U.S. Government purposes. Los Alamos National Laboratory requests that the publisher identify this article as work performed under the auspices of the U.S. Department of Energy. Los Alamos National Laboratory strongly supports academic freedom and a researcher's right to publish; as an institution, however, the Laboratory does not endorse the viewpoint of a publication or guarantee its technical correctness.

2012 Update to the Site Discharge Pollution Prevention Plan, Revision 1

Los Alamos National Laboratory
NPDES Permit No. NM0030759
LA-UR-13-22770 • May 1, 2013

Overview



CONTENTS

- 1.0 Background 3
 - 1.1 Individual Permit 3
 - 1.2 2012 Update to the Site Discharge Pollution Prevention Plan, Revision 1 5
 - 1.3 Monitoring and Inspection Procedures 8
- 2.0 Site Discharge Pollution Prevention Team 9
- 3.0 Guide to the Updated Information in the 2012 SDPPP Update, Volumes 1–5 9
 - 3.1 Section 1, Site Descriptions 10
 - 3.2 Section 2, Control Measures 11
 - 3.3 Section 3, Storm Water Monitoring 11
 - 3.4 Section 4, Inspections and Maintenance 12
 - 3.5 Section 5, Compliance Status 12
- 4.0 Public Involvement 12
 - 4.1 Website Updates 12
 - 4.2 Email Notification 13
 - 4.3 Public Meetings 13
- 5.0 Watershed Protection Approach 13

Appendixes

- Appendix A Acronyms and Glossary 14
- Appendix B Control Measure Fact Sheets 18
- Appendix C Understanding the Analytical Results Plots 46
- Appendix D References 48

1.0 Background

1.1 Individual Permit

The U.S. Department of Energy (DOE) and Los Alamos National Security, LLC (LANS), collectively the Permittees, have prepared this Update to the Site Discharge Pollution Prevention Plan, Revision 1 (hereafter, the SDPPP Update) for the Individual Storm Water Permit pursuant to the requirements of National Pollutant Discharge Elimination System (NPDES) Permit No. NM0030759 (hereafter, the Individual Permit or Permit or IP), as authorized by the U.S. Environmental Protection Agency (EPA). The Individual Permit authorizes the discharge of storm water associated with historical industrial activities at Los Alamos National Laboratory (the Laboratory) from specified solid waste management units (SWMUs) and areas of concern (AOCs), collectively referred to as Sites. The Individual Permit does not regulate storm water discharges associated with current conventional industrial activities at the Laboratory. The Permit—[NPDES No. NM0030759](#)—incorporating the latest modifications became effective on November 1, 2010.

The Sites regulated under this Permit are a subset of the SWMUs and AOCs that are being addressed under the March 2005 Compliance Order of Consent (the Consent Order). The Consent Order fulfills the corrective action requirements in §3004(u) and §3008(h) of the Resource Conservation and Recovery Act (RCRA). A SWMU is a discernible unit at which solid wastes may have been “routinely and systematically released,” possibly resulting in a release of hazardous constituents. A Site that met the definition of a SWMU or AOC was evaluated for inclusion in the Permit based on the following criteria: (1) the SWMU/AOC is exposed to storm water (e.g., not capped or subsurface); (2) the SWMU/AOC contains “significant industrial material” (e.g., not cleaned up or has contamination in place); and (3) industrial materials from the SWMU/AOC could potentially impact waters of the United States.



The selection of SWMUs and AOCs for inclusion in the Permit was based on storm water data available at the time the Permit application was submitted. The investigation and remediation of SWMUs and AOCs under the Consent Order began before the effective date of the Individual Permit and continues concurrently with implementation of the Individual Permit.

The Individual Permit categorizes a Site as having had an “industrial activity” that creates a “point source discharge” and directs the Permittees to monitor representative storm water discharges from Sites at specified sampling points known as site monitoring areas (SMAs). An SMA is a single drainage area within a subwatershed and may include more than one Site. Storm water from a Site may drain to multiple subwatersheds and may be associated with multiple SMAs.

The Individual Permit contains nonnumeric technology-based effluent limitations, coupled with a comprehensive, coordinated inspection and monitoring program, to minimize pollutants in the Permittees’ storm water discharges associated with historical industrial activities from specified SWMUs and AOCs. The Permittees are required to implement site-specific control measures (including best management practices [BMPs]) to address the nonnumeric technology-based effluent limits, as necessary, to reduce or minimize pollutants in their storm water discharges to the extent achievable.

The Permit establishes target action levels (TALs) that are equivalent to New Mexico State water-quality criteria. These TALs are used as benchmarks to determine the effectiveness of control measures implemented under the Permit. That is, confirmation monitoring sample results for an SMA are compared with applicable TALs. If one or more confirmation monitoring result exceeds a TAL, the Permittees must take corrective action through the installation of measures reasonably expected to (1) meet applicable TALs at the Site, (2) achieve total retention of storm water discharges from the Site, (3) totally eliminate exposure of pollutants to storm water, (4) or demonstrate that the Site has a certificate of completion under the Consent Order. The Individual Permit requires that the Permittees certify to EPA completion of corrective action at each Site by a specific deadline based upon the Site’s status either as a high priority or moderate priority Site.

Where the Permittees have installed measures to minimize pollutants in their storm water discharges as required by Part I.A of the Permit at a Site or Sites, but are unable to certify completion of corrective action under Sections E.2(a) through E.2(d) (individually or collectively), the Permittees may submit an alternative compliance request to EPA. If EPA grants the alternative compliance request in whole or in part, it will issue a new individually tailored work plan for the Site or Sites. EPA will also extend the compliance deadline for completion of corrective action, as necessary, to implement this work plan. Corrective action will be accomplished on a case-by-case basis pursuant to an individually tailored compliance schedule determined by EPA. Figure 1 is a “road map” illustrating key activities in the Individual Permit and shows the steps involved in the corrective action process.

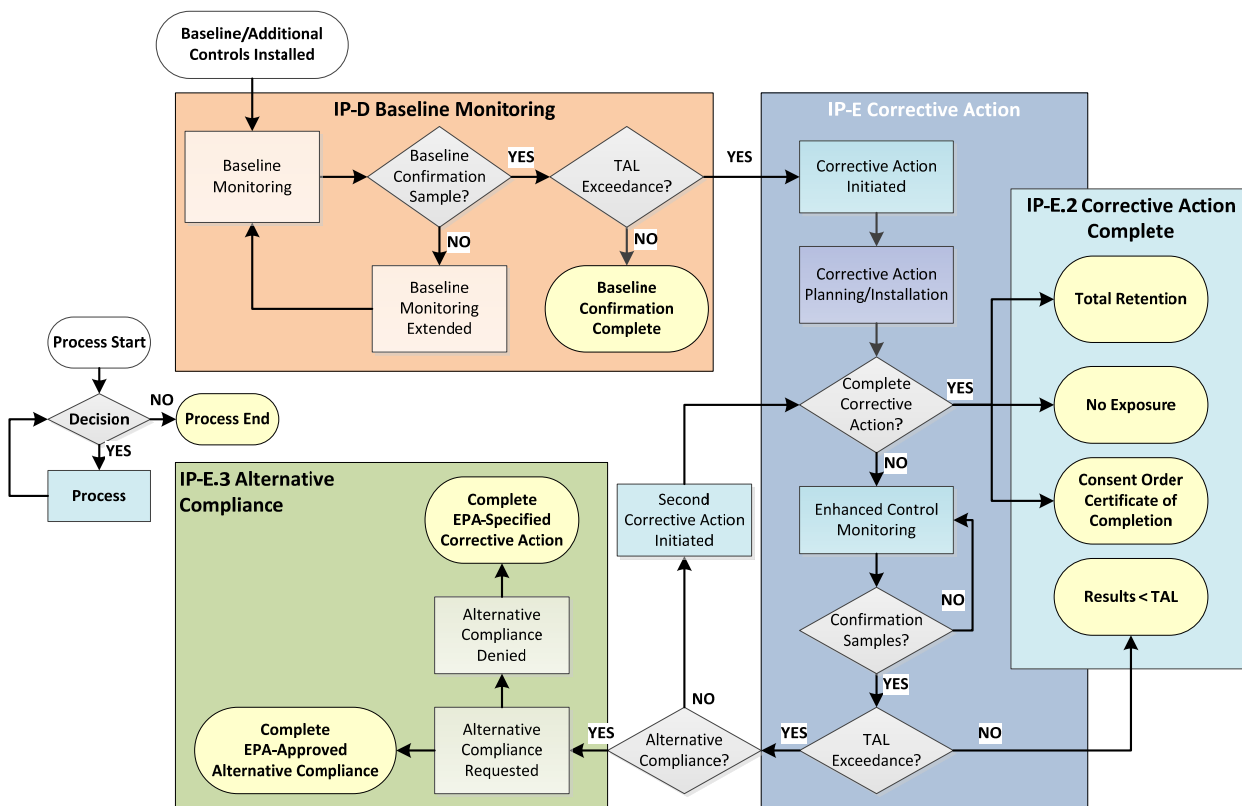


Figure 1 Permit compliance road map

1.2 2012 Update to the Site Discharge Pollution Prevention Plan, Revision 1

The SDPPP Update is written for use by Laboratory personnel and for review by EPA and the public. For each Site, the SDPPP Update

- describes the historical industrial activities,
- summarizes the available data regarding the nature and extent of any surface contamination related to the historical activities, and
- identifies the structural control practices implemented or that will be implemented to prevent the pollutants of concern from impacting storm water runoff quality.

Part I.F.4 of the Permit states that “The SDPPP shall be updated annually to fully incorporate all changes made during the previous year and to reflect any changes projected for the following year.”

The SDPPP Update also describes other relevant information, such as monitoring results, inspections and maintenance, and procedures. The report is intended to be a living document that is kept current throughout the year by maintaining records and relevant documents alongside the SDPPP. At the end of each field season, all changes made during the year and any projected for the coming year are incorporated into an update.



Construction of rock check dam in Mortandad Canyon



Construction of rock check dam in Mortandad Canyon

The original SDPPP was published, submitted to EPA, and placed on the Individual Permit website on April 30, 2011. The following year, the SDPPP was revised and was made available on the Permit website on May 1, 2012. Revision 1 is available at <http://www.lanl.gov/community-environment/environmental-stewardship/protection/compliance/individual-permit-stormwater/site-discharge-pollution-prevention-plan.php>. The SDPPP Update, together with Revision 1, meets the requirements of Part I.F of the Individual Permit. The reporting format has been redesigned this year to be web-friendly, making information about a specific Site or SMA easier to find, download, and print. Table 1 provides a crosswalk of SDPPP requirements with the location of the information.

Table 1 SDPPP Requirements

Part I Requirement		SDPPP Section
Part	Description	
F.1 (a)	Site Discharge Pollution Prevention Team	2012 Update, Overview Section 2.0, Site Discharge Pollution Prevention Team Update
F.1 (b)	Site Description: <ul style="list-style-type: none"> • historical activities at each Site • precipitation information • general location and Site maps 	<ul style="list-style-type: none"> • 2012 Update, V1–5, Section xxx.1,¹ Site Descriptions • 2012 Update, V1–5, Attachment 3, Precipitation Network • 2012 Update, V1–5, Figure xxx.1, IP website— http://www.lanl.gov/community-environment/environmental-stewardship/protection/compliance/individual-permit-stormwater/site-monitoring-area-maps.php
F.1 (c)	Receiving Waters and Watershed	SDPPP V1–5, Rev. 1, Section 300.3
F.1 (d)	Summary of Pollutant Sources	2012 Update, V1–5, Section xxx.1 Site Descriptions
F.1 (e)	Description of Control Measures	2012 Update, Overview Appendix B, Control Measure Fact Sheets; 2012 Update, V1–5, Section xxx.2 Control Measures
F.1 (f)	Schedules for Control Measure Installation	2012 Update, V1–5, Section xxx.2, Control Measures
F.1 (g)	Monitoring and Inspection Procedures	2012 Update, Overview Section 1.3, Monitoring and Inspection Procedures, IP website— http://www.lanl.gov/community-environment/environmental-stewardship/protection/compliance/individual-permit-stormwater-dev/site-discharge-pollution-prevention-plan.php
F.1 (h)	Signature Requirements	SDPPP V1–5, Rev 1., Section 100 No Signature in 2012 Update V1–5, as Rev. 1 is still applicable
F.2 (a)	Documentation: Dates of Training Sessions	2012 Update, Overview Section 2.0, Site Discharge Pollution Prevention Team Update
F.2 (c)	Documentation: Inspection Reports	2012 Update, V1–5, Section xxx.4, Inspections and Maintenance
F.2 (d)	Documentation: An accounting of and explanation of length of time taken to modify or implement measure following discovery of deficiency.	2012 Update, V1–5, Section xxx.4, Inspections and Maintenance; Table xxx-3, Maintenance during 2012
F.3 (a)	Required Modifications: Construction or change in design, operation or maintenance at the facility having a significant impact on the discharge, or potential for discharge, of pollutants from the facility.	2012 Update, V1–5, Section xxx.4, Inspections and Maintenance

Part I Requirement		SDPPP Section
Part	Description	
F.3 (b)	Required Modifications: Findings of deficiencies in control measures during inspections of based on analytical monitoring results.	2012 Update, V1–5, Section xxx.4, Inspections and Maintenance
F.3 (c)	Required Modifications; <ul style="list-style-type: none"> any change of monitoring requirement or compliance status. 	<ul style="list-style-type: none"> 2012 Update, V1–5, Attachment 5, Sampling Requirements and Plan 2012 Update, V1–5, Section xxx.5, Compliance Status; Table xxx-4, Compliance Status during 2012
F.3 (d)	Required Modifications: Any change of SMA location	2012 Update, V1–5, Section xxx.1, Site Descriptions, discussed in the last paragraph of the section and documented in the project map (Figure xxx.1) and in Attachment 4, Physical Characteristics.
F.3 (e)	Required Modifications: Summary of changes from the last year’s SDPPP.	2012 Update, V1–5, Attachment 1, Amendments
F.4	SDPPP updated annually to incorporate previous year changes and following year projections	2012 Update, V1–5
F.5	SDPPP Availability. Paper copy of current SDPPP to be immediately available at facility and copy of SDPPP to be made available on public website.	Copies of SDPPP V1–5, Rev. 1, and the 2012 Update, V1–5, are available in the Project Manager’s Office (Pueblo Complex), the Records Processing Facility (Pueblo Complex), and the Public Reading Room (Pojoaque, NM). The SDPPP is also available on the public website: http://www.lanl.gov/community-environment/environmental-stewardship/protection/compliance/individual-permit-stormwater-dev/site-discharge-pollution-prevention-plan.php
G.2	Post-Storm Inspections. Adverse weather events shall be documented and maintained with the SDPPP.	2012 Update, V1–5, Overview, 3.3 Storm Water Monitoring
I.1	Construction Activity Permit associated with Site Remediation. Steps taken to minimize discharges of contaminated runoff during remediation activity shall be included in the SDPPP Update	2012 Update, V1–5, Section xxx.4, Inspections and Maintenance; Table xxx-2 Control Measure Inspections during 2012 (Inspection Type is “Remediation Construction Activity”); Table xxx-3 Maintenance during 2012
I.2	Deletion of Site. Documents to support a request of site deletion must be kept with facility’s SDPPP.	Not yet applicable

Part I Requirement		SDPPP Section
Part	Description	
I.3	Watershed Protection Approach. EPA encourages the Permittees to voluntarily install watershed-based control measures, such as sediment barriers, to mitigate sediment or storm water runoff reaching the main channels of the canyons and/or the Rio Grande. The Permittees should include information and monitoring data regarding the installation of any such watershed-based control measures in the Annual Report or the SDPPP.	2012 Update, Overview, 5.0 Watershed Protection Approach
I.5	Reopener. This Permit may be reopened and modified in accordance with 40 C.F.R. § 122.62. Any changes to monitoring and/or control measure requirements made to the Permit in accordance with such a permit modification shall be addressed in the Annual Report and in the annual SDPPP update.	Not yet applicable

¹ Section xxx.1-5, the xxx refers to the number assigned to each SMA in the Update.

This Overview includes information pertaining to all five watershed-based SDPPP volumes and describes the updated information that is new this year. Appendixes to the Overview include acronyms and a glossary of terms used in this report (Appendix A); control measure fact sheets (Appendix B); a guide to understand the information presented in the data graphs (Appendix C); and references used throughout the report (Appendix D).

1.3 Monitoring and Inspection Procedures

Individual Permit procedures are reviewed annually and updated as needed throughout the year. Monitoring and inspection procedures that will be used in 2013 are listed below, and copies are posted on the IP website: <http://www.lanl.gov/community-environment/environmental-stewardship/protection/compliance/individual-permit-stormwater/site-discharge-pollution-prevention-plan.php>.

- EP-DIV-SOP-10013, Inspecting Storm Water Runoff Samplers and Retrieving Samples
- EP-DIV-SOP-5215, Processing Storm Water Samples
- EP-DIV-SOP-10004, Managing Electronic Precipitation Data for Storm Water Projects
- EP-DIV-SOP-10008, Installing, Setting Up, and Operating ISCO Samplers
- EP-DIV-SOP-20012, Post-Storm Inspection of NPDES Individual Permit Storm Water Control Measures and Installation and Maintenance of Non-Engineered Storm Water Control Measures
- EP-DIV-SOP-20125, Performing NPDES Storm Water Individual Permit Visual Inspections
- EP-DIV-SOP-20060, Certifying Individual Permit Storm Water Control Measures
- EP-DIV-SOP-xxxxx, Inspecting No Exposure, Engineered Retention and Watershed Storm Water Structures (in preparation, procedure number has not yet been assigned)

2.0 Site Discharge Pollution Prevention Team

To facilitate the implementation, maintenance, and revision of the SDPPP, a Site Discharge Pollution Prevention Team (PPT) has been established. The PPT is responsible for assisting in developing and revising the SDPPP as well as maintaining control measures and taking corrective actions for deficiencies. Team members generally have, at a minimum, a Bachelor’s degree and specialty qualifications, such as Certified Inspector of Sediment and Erosion Control (CISEC) and/or Certified Professional in Erosion and Sediment Control (CPESC).

The PPT consists of personnel whose selection is based on their familiarity with Site locations and surrounding operations. The specific responsibilities of the PPT are provided in Table 2. Each member of the PPT has access to electronic and paper copies of the Individual Permit and this SDPPP Update.

Table 2 PPT Roles and Responsibilities

PPT Title	Functional Responsibility
Surface Water and Canyons Investigation Project Manager	Responsible for managing implementation of Individual Permit requirements.
IP Compliance Team Lead	Responsible for ensuring compliance is met for the Individual Permit Storm Water Program.
IP Corrective Actions Field Project Lead	Responsible for implementation of Individual Permit field requirements by installing, inspecting, and maintaining control measures, and implementing corrective actions when TALs are exceeded. Provides training and develops qualifications for personnel.
IP Monitoring Field Project Lead	Responsible for implementation of storm water monitoring.
Lead Inspector	Responsible for coordinating Site inspections as required by the IP. Resolve issues related to successful conduct of operations.
Inspector	Responsible for conducting Site inspections as required by the IP. Coordinates with the Lead Inspector to resolve issues related to successful conduct of operations.
Pollution Prevention Team Members	Responsible for implementing and updating the SDPPP, assisting in maintaining control measures and implementing corrective actions for deficiencies, and completing training.

Employee training is essential for effective implementation of the SDPPP and success of the storm water program. Project personnel receive both formal and informal training in the execution of storm water management at the IP Sites. Formal training, which covers all aspects of the SDPPP, is conducted annually before the field season starts. A copy of the 2013 training module will be available on the IP website in May, and training logs will be maintained alongside the 2012 SDPPP Update. During the field season, daily tailgate meetings are conducted to inform personnel of work assignments, impending changes, and work-related issues.

3.0 Guide to the Updated Information in the 2012 SDPPP Update, Volumes 1–5

The SDPPP Update maintains the previous five-volume watershed organizational structure for administrative convenience (Table 3). For clarity, SMAs are uniquely and consecutively numbered from 1–250 across the five volumes, as presented in the last column of Table 3.

Table 3 SDPPP Update Organizational Structure: Volume, Watershed, and Associated SMAs

SDPPP Volume	Primary Watershed	Receiving Waters	SMA Numbers in the Contents Table
Volume 1	Los Alamos/Pueblo	Rendija Canyon Bayo Canyon Pueblo Canyon DP Canyon Los Alamos Canyon	1–64
Volume 2	Mortandad/Sandia	Mortandad Canyon Ten Site Canyon Cañada del Buey Canyon Sandia Canyon	65–128
Volume 3	Pajarito	Pajarito Canyon Starmers Canyon Twomile Canyon Threemile Canyon	129–179
Volume 4	Water/Cañon de Valle	Cañon de Valle Canyon Potrillo Canyon Water Canyon Fence Canyon	180–229
Volume 5	Ancho/Chaquehui	Ancho Canyon Chaquehui Canyon	230–250

The Site information, organized by SMA, has been updated as follows.

3.1 Section 1, Site Descriptions

Site descriptions have been updated using information that was not available at the time of the Permit application. At the end of each description, potential contaminants associated with industrial materials historically managed at the Site are identified. References used for the update are listed in Appendix D of the Overview.

A current project map is located at the end of each SMA chapter. Maps updated throughout the year will be posted on the IP website: <http://www.lanl.gov/community-environment/environmental-stewardship/protection/compliance/individual-permit-stormwater/site-monitoring-area-maps.php>.

SMA and Site boundaries can be viewed on the landscape by following the Google Earth link: http://www.lanl.gov/projects/envplan/control/sediment/ge_stormwater.php. This link is also available from the IP web site home page.

The final paragraph in this section identifies changes to the Site boundary, if they occurred. It describes why the boundary changed and lists implications of the change (e.g., did the SMA boundary also change? Was the sampler moved?). The updated boundary is shown on the project map, and physical characteristics that changed (sampler coordinates, SMA drainage area, and Site drainage area) are updated and footnoted in Attachment 4 of each SDPPP Update volume.

3.2 Section 2, Control Measures

The active control measure table has been updated to include the enhanced controls constructed in 2012 and to remove any controls that were retired. Control measures may be retired for several reasons; for example, the lifespan of the control type could expire or the control measure could be damaged by wildlife or flooding. In any case, the retired control measure is replaced with an equal or more effective measure. The fact sheets in Appendix B provide sufficient detail to identify and describe the baseline and enhanced control measures constructed at the Sites. Representative photographs of control measures are interspersed throughout the text in the SDPPP Update. Photographs of all baseline controls and enhanced controls are available by following the Construction Certification link on the IP website: <http://www.lanl.gov/community-environment/environmental-stewardship/protection/compliance/individual-permit-stormwater/construction-certifications.php>.

The established vegetation control measure is being surveyed in the field during the 2013 annual inspections. The location of this control measure will be added to the project maps, and the updated maps will be available on the IP website before the beginning of the monsoon season.

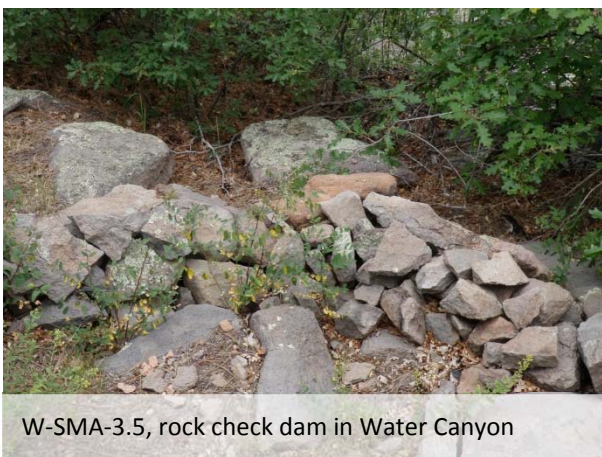


CHQ-SMA-7.1, established vegetation near Chaquehui Canyon

3.3 Section 3, Storm Water Monitoring

The monitoring section describes the storm water data, date of sample collection (if applicable), and the applicable TALs. New this year is a summary of the results from soil and sediment samples collected at the Site during Consent Order or previous investigations and an evaluation of the likelihood that a storm water TAL exceedance is related to historical industrial activities. This information will assist the PPT as it evaluates corrective action alternatives. The discussion is organized by Site and analyte.

Also new this year is a discussion of natural and anthropogenic background values for metals, gross alpha, and polychlorinated biphenyls in storm water that could be present in run-on from natural and anthropogenic sources and could influence TAL exceedances at the monitoring station.



W-SMA-3.5, rock check dam in Water Canyon

The storm water monitoring results are plotted on graphs located at the end of each SMA chapter. Organic and inorganic analytes are presented in different plots. A graphic explaining how to read the plot is presented in Appendix C.

The sampling plans for 2013 have been updated and provide more information this year. They are presented in Attachment 5 of each SDPPP Update volume.

There was no occurrence of adverse weather in any of the watersheds that impacted the PPT’s ability to conduct inspections within the 15-day window

required by the IP. However, in 2012, there were adverse weather events. In early June, there were several days with “red flag conditions,” which prohibits all field work because of extreme fire hazard. Flooding in upper Cañon de Valle was caused by elevated post–Las Conchas fire storm water runoff. The PPT reinspected and reevaluated all Sites potentially impacted by flooding. CDV-SMA-1.4, inspected on

July 11, 2012, received extensive damage to control measures and the storm water sampler; backup control measures were implemented until the damage could be repaired.

3.4 Section 4, Inspections and Maintenance

Control measure inspection tables and maintenance tables were updated for 2012. The precipitation network for each watershed and rain event data in 2012 is presented in Attachment 3 in each SDPPP Update volume.

3.5 Section 5, Compliance Status

The compliance status table has been updated for 2012. The terms used to track compliance status are defined in Appendix A of the Overview.



4.0 Public Involvement

4.1 Website Updates

The website structure has been redesigned to make IP documents easier to locate. The major links from the home page are as follows:

- **Public Meetings**—provides a link to the agenda and presentations for all meetings held to date.
- **Site Discharge Pollution Prevention Plan**—provides links to the five-volume 2012 SDPPP Update; the five-volume 2011 SDPPP, Revision 1, and monitoring and inspection procedures currently used by the PPT.
- **SMA Maps**—provides a direct link to each project map, maps are organized by SDPPP volume and updated when any change is made.
- **Reports**—provides links to the 2012 Annual Report, 2012 Compliance Status Report, the 2012 Target Action Level Exceedance Report, and Status Reports.
- **Construction Certifications**—provides links to the certification letters submitted to EPA following construction of enhanced controls and baseline controls.
- **Certification of Corrective Action Complete**—provides links to letters submitted to EPA that certify analytical results below TALs, total retention construction, construction to eliminate exposure, and certificates of completion received from NMED under the Consent Order.
- **Alternative Compliance**—provides links to the EPA submittal letter and alternative compliance package, provides links to underlying technical studies, and provides a place holder for public comments and the Permittees’ response to be submitted to EPA.
- **Miscellaneous EPA Submittals**—provides links to letters submitted to EPA regarding force majeure, certification of analytical results, boundary changes, and a request to extend the permit renewal application deadline.

4.2 Email Notification

A “Subscribe” link is available on the IP webpages, in the right column, that allows anyone with an email address to sign up to receive email updates about compliance with the Individual Permit. The public can also ask questions to the IP team from the “Get Expertise” link in the left column.

4.3 Public Meetings

Public meetings are held approximately every 6 months. Meetings are announced through the email notification process and in local newspapers. The next meeting will be held at Fuller Lodge on June 4, 2013, in Los Alamos, NM. The purpose of the meeting is to discuss the alternative compliance package submitted to EPA on May 1, 2013, and to answer questions from the public. An agenda will be available on the home page of the IP website in the “What’s New” section a week before the meeting.

5.0 Watershed Protection Approach

A watershed scale sediment transport mitigation project in Los Alamos and Pueblo Canyons has been implemented with the overall goal of minimizing the potentially erosive nature of storm water runoff, enhancing deposition of sediment, and reducing or eliminating access of contaminated sediments to flood erosion. The mitigation measures include the DP Canyon grade-control structure and associated wetlands; the Pueblo Canyon cross-vane structures, wing ditch, willow planting, wetlands, and grade-control structure; and the Los Alamos Canyon low-head weir, storm water retention basins, and associated willow planting. The watershed is monitored from May to October to evaluate the effects of the mitigation project.



Appendix A Acronyms and Glossary

Acronyms

AOC	area of concern
ATAL	average target action level
B	additional baseline control measure
BFM	bonded-fiber matrix
bgs	below ground surface
BMP	best management practice
BV	background value
CB	certified baseline control measure
CISEC	Certified Inspector of Sediment and Erosion Control
CMP	corrugated metal pipe
CMR	Chemistry and Metallurgy Research
COC	certificate of completion
Consent Order	Compliance Order on Consent
COPC	chemical of potential concern
CPESC	Certified Professional in Erosion and Sediment Control
CWA	Clean Water Act
CWWTP	Central Wastewater Treatment Plant
D&D	decontamination and decommissioning
DL	detectable level
DU	depleted uranium
EC	enhanced control
ECB	erosion-control blanket
EM	electromagnetic
EPA	Environmental Protection Agency (U.S.)
FFCA	Federal Facility Compliance Agreement
FGM	flexible-growth medium
FV	fallout value
FY	fiscal year
GPR	ground-penetrating radar
GSA	General Services Administration
HE	high explosives
HRL	Health Research Laboratory

Appendix A, Acronyms and Glossary (continued)

Acronyms (continued)

HYPO	high power
IA	interim action
ID	identification
IM	interim measure
IP	National Pollutant Discharge Elimination System (NPDES) Permit No. NM0030759
Laboratory	Los Alamos National Laboratory
LANL	Los Alamos National Laboratory
LANS	Los Alamos National Security, LLC
LASCP	Los Alamos Site Characterization Program
LLW	low-level waste
LOPO	low power
MD	munitions debris
MDA	material disposal area
MEC	munitions and explosives of concern
MLQ	maximum quantitation level
MSGP	Multi-Sector General Permit
MTAL	maximum target action level
NES	nuclear environmental site
NFA	no further action
NMED	New Mexico Environment Department
NNSA	National Nuclear Security Administration
NPDES	National Pollutant Discharge Elimination System
OD	open detonation
OEW	ordnance and explosives waste
OU	operable unit
OWR	Omega West Reactor
PBX	plastic-bonded explosive (potassium butyl xanthate)
PCB	polychlorinated biphenyl
Permittees	DOE and LANS
PF	permitted feature
PHERMEX	Pulsed High-Energy Radiographic Machine Emitting X-Rays
PLS	pure live seed
PPT	Pollution Prevention Team
PRS	Potential Release Sites (Laboratory database)

Appendix A, Acronyms and Glossary (continued)

Acronyms (continued)

RADS	radionuclides
RCRA	Resource Conservation and Recovery Act
RFI	RCRA facility investigation
RLW	radioactive liquid waste
RLWTF	radioactive liquid waste treatment facility
SAA	satellite accumulation area
SAFR	small arms firing range
SAL	screening action level
SDPPP	Site Discharge Pollution Prevention Plan
SMA	site monitoring area
SSL	soil screening level
SUPO	super power
SWMU	solid waste management unit
SWSC	Sanitary Wastewater Systems Consolidation (plant)
SWTS	Storm Water Tracking System
TA	technical area
TAL	target action level
TCLP	toxicity characteristic leaching procedure
TNT	trinitrotoluene(2,4,6-)
TRM	turf-reinforcement mat
TRU	transuranic
TSCA	Toxic Substance Control Act
TSD	treatment, storage, and disposal (unit)
ULR	unassigned land release
USFS	U.S. Forest Service
UTL	upper tolerance limit
UXO	unexploded ordnance
VCA	voluntary corrective action
VCP	vitrified clay pipe
WBR	Water Boiler Reactor
WQDB	Water Quality Database
WWTP	waste water treatment plant

Appendix A, Acronyms and Glossary (continued)

Glossary

Baseline Confirmation Complete—All confirmation monitoring results for all pollutants of concern at the SMA are at or below TALs, and corrective action is not required at the Sites. No further sampling is required.

Baseline Monitoring Extended—Baseline confirmation monitoring is in progress, and no storm water from a measurable storm event has been collected. There has been no TAL exceedance.

Corrective Action Initiated—A sample was collected during baseline confirmation monitoring and analytical results show at least one pollutant concentration is above TAL, resulting in initiation of corrective action. Corrective action may include installing enhanced control measures, installing control measures that totally retain storm water, installing control measures that totally eliminate the exposure of pollutants, or receiving a certificate of completion from NMED.

Enhanced Control Corrective Action Monitoring—Confirmation monitoring at an SMA is initiated to determine how well enhanced controls are performing. This monitoring occurs after certification that the enhanced control measures have been installed and are complete.

Corrective Action Complete—Completion of corrective action is demonstrated by one of the following:

- Analytical results from enhanced control monitoring show pollutant concentrations for all pollutants of concern at the Site to be at or below applicable TALs; or
- Control measures that totally retain and prevent the discharge of storm water have been installed at the Site; or
- Control measures that totally eliminate exposure of pollutants to storm water have been installed at the Site; or
- The Site has achieved RCRA “no further action” status or a certificate of completion from NMED.

Appendix B Control Measure Fact Sheets

Control Class	Control Type	Control Name
01	00	Seed and Mulch
	01	Seed and Wood Mulch
	02	Seed and Gravel Mulch
	03	Hydromulch
	04	Seeding
	05	Gravel Mulch
	06	Erosion Control Blanket
	07	Seed and Compost
02	00	Permanent Vegetation
	01	Grasses and Shrubs
	02	Forested/Needle Cast
	03	Vegetation Buffer Strip
	04	Established Vegetation
03	00	Berms
	01	Earthen Berm
	02	Base Course Berm
	03	Log Berm
	04	Asphalt Berm
	05	Silt Dike
	06	Straw Wattles
	07	Terra Tubes
	08	Retaining Wall
	09	Curbing
	10	Gravel Bags
	11	Eco-Block
	12	Rock Berm
	13	S-Fence
14	Coir Log	
04	00	Channel/Swale
	01	Earthen Channel/Swale
	02	Concrete/Asphalt Channel/Swale
	03	Rock Channel/Swale
	04	Culvert
	05	Water Bar
	06	Rip Rap
	07	Vegetated Swale
08	TRM-Lined Swale	

Appendix B, Control Measure Fact Sheets (continued)

Control Class	Control Type	Control Name
05	00	Sediment Traps and Basins
	01	Sediment Trap
	02	Sediment Basin
	03	Sand Filter
06	00	Check Dam
	01	Rock Dam
	02	Log Dam
	03	Juniper Bales
07	00	Gabions
	01	Gabions
	02	Gabion Blanket
08	00	Cap
	01	Earth Cap
	02	Rock Cap
	03	Concrete/Asphalt Cap
	04	Metal Cap

Appendix B, Control Measure Fact Sheets (continued)

Seed and Mulch

General Description

Seed and mulch will always be used in combination. Mulch includes wood, hydromulch, gravel, erosion control blankets, and turf reinforcement blankets.

Perennial vegetative cover from seeding has been shown to remove between 50% and 100% of total suspended solids from storm water runoff, with an average removal of 90%.

Control Function

Seed and mulch controls are used primarily for erosion control. However, these control measures can also be used for run-on, runoff, and sediment control if the storm water discharge is only sheet flow.

Construction Specifications/Installation Instructions

Complete Los Alamos National Laboratory (LANL) engineering standards are available.

Materials

Protect materials from deterioration during delivery and while stored at site.

Wood Mulch

- Wood straw mulch, wood chips, green-waste mulch, and bark chips are all accepted forms of wood mulch. Wood mulch application should completely cover the ground surface to provide adequate protection from raindrop impact and promote seed germination and seedling survival.

Gravel Mulch

- Gravel should be ¾ in. to 2 in. in diameter, round or crushed. Base course or any gravel with excessive fine material. Gravel mulch should be applied 3–6-in. thick over the soil surface.

Hydromulch

- Slopes flatter than 2:1—Provide mulch material consisting of 100% virgin wood fibers, combined with an organic plantago based tackifier. Bagged mulch/tackifier mix that is homogenous within the unit package may also be used.
- Slopes steeper than 2:1—Provide bonded-fiber matrix ([BFM] and flexible-growth medium [FGM] etc.) mulches.

Seed

Wet seed shall be rejected. Seed can be spread mechanically or by hand. Because of the potential to introduce trace elements into storm water, it is not recommend using fertilizers with storm water controls.

The following sources have a “LANL Storm Water Mix” of seed available that has been formulated to LANL specifications:

- Ranier Seed
- Granite Seed
- Curtis & Curtis, Inc.

Appendix B, Control Measure Fact Sheets (continued)

Blankets and Matting

- Slopes less than 1:1—Straw/coir blend blankets.
- For high flow channels or slopes steeper than 1:1, use permanent composite turf-reinforcement mat (TRM).
- Staples: U-shaped, 11 gauge or heavier steel wire, minimum leg length of 6 in. after bending, with a throat approximately 2 in. wide. Metal geotextile stake pins: a minimum of 6–8 in. long, a minimum 3/16 in. in diameter steel with a 1 ½-in. steel washer at the head of the pin.

Installation

Seed:

- Avoid seeding during windy weather or when topsoil is saturated or frozen.
- If necessary or feasible, loosen soil with disking, raking or harrowing. Remove large clods and stones, or other foreign material that would interfere with seeding equipment and erosion control blankets.
- Seed shall be applied uniformly using calibrated spreaders, cyclone seeders, mechanical drills, broadcast spreading, or hydroseeders. When drill seeding, plant seed mix at a rate of 30–35 pure live seed (PLS) lb/acre. When broadcast seeding, plant seed mix at a rate of 32–37 PLS lb/acre. To provide adequate seed-soil contact, incorporate broadcast seed into the soil by raking or chain dragging.
- Mulch shall be applied following the completion of seeding per requirements below.
- Where temporary watering is required for seeded areas, provide temporary water system that may be a sprinkler system, or a water truck with a spray boom. Do not drive trucks with spray systems on seeded areas, and ensure water force does not cause movement of mulch or seed on the ground.
- Reseed void areas greater than 6 ft² or repetitive voids greater than 2 ft² amounting to more than 10% of any area that appears the growing season following installation.
- Prohibit people and vehicles from traveling over the seeded areas.

Hydromulch:

- If hydraulically applying mulch as part of the broadcast seeding process, use a two-step process.
- Apply seed with a tracer. Once seed is applied, apply full complement of mulch. This shall allow seed to be in good contact with soil surface and not suspended in mulch matrix.
- Mix slurry in a tank with an agitation system and spray, under pressure, uniformly over soil surface. Apply mulch evenly across landscape at a minimum rate of 3000 lb/acre. When using plantago based tackifier as mulch, apply tackifier at a rate of 150 lb/acre.
- Use both horizontal and vertical movements in the applicator to achieve an even application of slurry material. Keep all materials in uniform suspension throughout mixing and suspension cycle when using hydraulic mulching equipment. Avoid overspray onto vegetated or other areas such as channels.

Appendix B, Control Measure Fact Sheets (continued)

BFM and FGM, Slopes 2:1 and Steeper:

- Mix and apply seed and soil amendments with small amount of mulch for visual metering.
- Hydraulically apply at a rate of approximately 3500 lb/acre over seeded area in accordance with manufacturer’s specified procedures to form a continuous uniform coverage. Apply from opposing directions to soil surface, reducing the “shadow effect” and assuring a minimum of 95% of soil surface coverage. Avoid overspray onto vegetated or other areas such as channels.

Erosion-Control Blankets (ECB) and Mats:

- At the top of the slope anchor the mat in a trench that is a minimum of 6 in. deep by 6 in. wide. Backfill the trench and compact the soil into the anchor trench.
- Ensure the blanket is unrolled in the direction of the water flow.
- Maintain direct soil contact during placement. Lay blankets loosely and maintain direct contact with soil. Do not place over protruding objects; rocks, grass, etc.
- Overlap the edges of adjacent parallel rolls a minimum of 4 in. and anchor mats approximately every 3 ft.
- If blanket splicing is required, provide a minimum 6 in. overlap between mats and place anchors, approximately 12 in. apart in the overlapped area.
- Anchor the matting to the ground using U-shaped wire staples or metal geotextile stake pins, driven flush with the ground surface.
- Do not use blankets on tuff slopes. Use hydraulic mulching on tuff slopes. Perennial species can provide permanent control. Annual species longevity is about two seasons.

Correct Purpose:

Erosion Control Blankets	Slopes Steeper than 1:1	Slopes Flatter than 1:1	Slopes Flatter than 1:2	Slopes Flatter than 1:3	Channels
Permanent blankets	X	X	X	X	X
BFM, FGM hydromulch		X	X	X	
Wood fiber hydromulch			X	X	
Straw/Coir blankets		X	X	X	

Inspection and Maintenance

Installation Inspection:

- Inspect control area for uniform application of seed and mulch.
- Ensure blankets are properly trenched, overlapped, and stapled in. Rocks are not equal to staples to anchor blankets to the soil. Check that rocks, sticks, or bushes are not interfering with the blankets’ contact with the ground.

Appendix B, Control Measure Fact Sheets (continued)

- Check that seed is under mulch, not on top or missing.
- Inspect seeded area for evidence of erosion (rills, gullies). Check for erosion and undermining. Backfill and compact any rills, storm water diversion and conveyance controls may be installed to divert concentrated flows away from seeded areas.
- ECBs should biodegrade in place; straw blankets last 2–3 yr at LANL.
- Repair torn or windblown blankets.
- Inspect reseeded areas for uniform growth of vegetation. Check for areas of vehicle or other impacts. Reseed void areas greater than 6 ft².
- Inspect existing vegetated areas for uniform growth of vegetation. Trees count towards total vegetative cover. Check for erosion. Storm water diversion and conveyance controls may need to be installed or use blankets to increase the erosion resistance of vegetated areas.

Failure Criteria

If control conditions meet the failure criteria, maintenance or replacement must be initiated to meet compliance with the Individual Permit (IP).

- Seed and mulch/hydromulch/ECB have not been properly installed and will obviously not function as required.
- Seed has not germinated after an appropriate amount of time and will obviously not function as required.
- Control has been damaged or degraded and will obviously not function as required.

Appendix B, Control Measure Fact Sheets (continued)

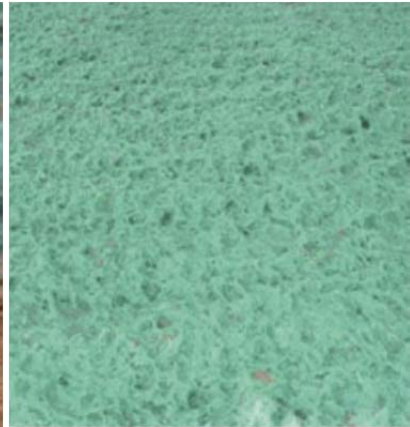
Visual Key for Proper Hydromulch Application (Flexterra-FGM shown below)



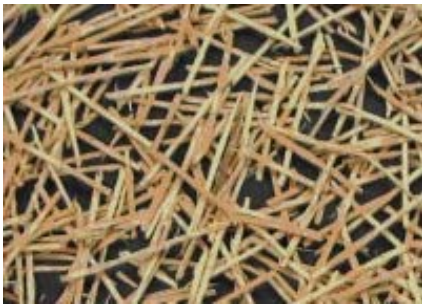
Improper Application



Improper Application



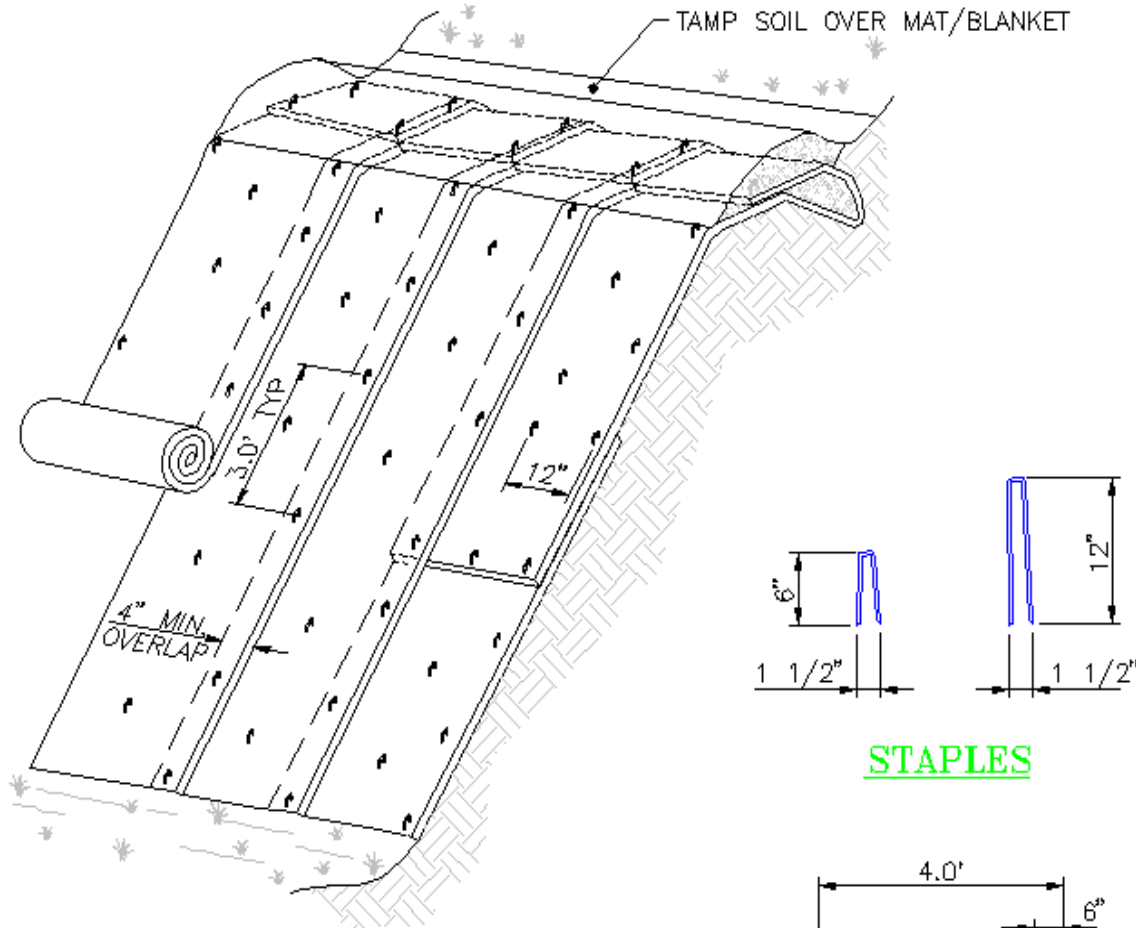
Proper Application
3000 lb/acre, 4.1-mm thick



Improper Application
Wood Straw at 70% Cover
Must be at 100% Cover

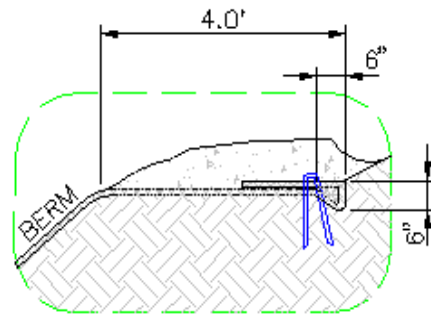
Appendix B, Control Measure Fact Sheets (continued)

**MATTING
SLOPE INSTALLATION**



**TYPICAL SLOPE
SOIL STABILIZATION**

STAPLES



NOTES:

1. SLOPE SURFACE SHALL BE FREE OF ROCKS, CLODS, STICKS AND GRASS. MATS/BLANKETS SHALL HAVE GOOD SOIL CONTACT.
2. APPLY PERMANENT SEEDING BEFORE PLACING BLANKETS. SEEDBED SHALL BE APPROXIMATELY 3-5 INCHES DEEP.
3. UNROLL MATTING IN THE DIRECTION OF WATER FLOW.
4. LAY BLANKETS LOOSELY AND STAKE OR STAPLE TO MAINTAIN DIRECT CONTACT WITH THE SOIL. DO NOT STRETCH.

Appendix B, Control Measure Fact Sheets (continued)

Permanent Vegetation

General Description

Established vegetation describes areas of existing mature vegetation that provides erosion control and storm-water infiltration. There are two broad categories of established vegetation at LANL: (1) low-growing vegetation is classified as grasses and shrubs and (2) piñon-juniper, ponderosa, pine and mixed conifer vegetation is classified as forested.

Control Function

Established vegetation is primarily used for erosion control, including sediment control, run-on control, and runoff control in situations with no concentrated flow.

Control Specifications

Any area of existing perennial vegetation that increases storm water infiltration and protects the soil from wind erosion, raindrop impact, or storm water overland flow.

Inspection and Maintenance

- Inspect for significant disturbances to vegetation (e.g., construction, fire, thinning, road building, and new storm water channels).
- Repair significant disturbances and reestablish vegetation with other appropriate control measures.

Failure Criteria

If control conditions meet the failure criteria, maintenance or replacement must be initiated to meet IP compliance.

- Existing vegetation has been damaged or degraded to the point that it no longer functions as a significant storm water control.

Appendix B, Control Measure Fact Sheets (continued)

Berms

General Description

This category of storm water control includes earthen berms, base-course berms, log berms, asphalt berms, silt dike, straw wattles, retaining walls, curbing, gravel bags, Eco-Block, rock berms, S-fence, and coir log.

Control Function

Berms are used primarily for run-on diversion of sheet flow and channelized flow and are also used for retention of run-on, runoff, and sediment control in low-flow applications. Diversion berms will be constructed primarily from earth, base course, or asphalt (berms and curbing). Retention berms will be constructed primarily from earth, base course, logs, or asphalt. Straw wattles, S-fence, rock berms, and gravel bags can be used along the toe, top, and face and at-grade breaks of slopes to shorten slope length and along the perimeter of exposed soil areas to reduce flow velocities and retain sediment. Filter fabric can be used where additional reductions in turbidity are required. Retaining walls are used primarily for slope stabilization and sediment control.

Construction Specifications/Installation Instructions

Materials:

- Earthen and base course berms, log berms, and wattles can be used for low-flow applications. Asphalt berms must be used for concentrated flows.
- Straw wattles must be at least 8 in. in diameter. To be effective, fiber rolls at the toe of slopes must be at least 20 in. in diameter. An equivalent installation, such as stacked smaller-diameter wattles, can be used to achieve a similar level of protection.

Berm Installation:

- Earthen berms require vegetative controls upon completion of construction to prevent erosion of the berm itself. Riprap should be used if additional armoring is necessary.
- Install asphalt berms and curbs per design drawings. In general, the base of a berm is twice as wide as the height of the berm.
- For areas with significant traffic, gravel or asphalt berms should be constructed.
- Berm fill material should be placed in 6 to 12-in. lifts and each lift compacted with a compactor or the appropriate earth-moving equipment.
- Stabilize the berms with seed and ECBs, seed and hydromulch, or other appropriate stabilization. See vegetation and riprap fact sheets for information on those types of berm stabilization.
- When used as a perimeter or downslope control, berms shall divert runoff to a sediment trapping control such as a sediment trap or basin.

Appendix B, Control Measure Fact Sheets (continued)

Wattle and Coir Log Installation:

- Install straw wattles along the contour with the ends of each wattle turned upslope to prevent runoff from flowing around the end. Overlap ends for extended length.
- Install wattles in shallow trenches dug 3 to 5 in. deep for soft, loamy soils and 2 to 3 in. deep for hard, rocky soils.
- Determine the vertical spacing for slope installations on the basis of the slope gradient and soil type. A good rule of thumb is as follows:
 - ❖ 1:1 slopes = 10 ft apart
 - ❖ 2:1 slopes = 20 ft apart
 - ❖ 3:1 slopes = 30 ft apart
 - ❖ 4:1 slopes = 40 ft apart
- Drive wood stakes or rebar through the middle of the wattle and deep enough into the ground to anchor the roll in place. About 3 in. of the stake should stick out above the roll, and the stakes should be spaced 3 to 4 ft apart. If rebar is used, ensure the end is capped. Alternately, wood stakes may be placed on each side of the wattle tying across with a natural fiber twine or staking in a crossing manner ensuring direct soil contact at all times.
- Backfill the upslope length of the wattle with the excavated soil and compact.

Installation of Other Berm Types:

- Log berms installation is similar to wattles. Logs must be delimbed, trenched in, and backfilled. If necessary, secure with wooden stakes on either side of the log.
- Rock berms must be constructed of large angular rock. Height and depth of the berm depends on the expected storm water flow. Ends of berm should be brought forward to help contain the flow.
- Gravel-bag berms must be constructed of bags of woven polypropylene, polyethylene, or polyamide fabric and filled with 0.5–1-in.-diameter gravel. Gravel bags must be packed closely with no gaps. Ends of berm should be brought forward to help contain the flow.
- Eco-blok rubber sediment control block installation is similar to gravel bag berms. Eco-blok can be staked down to soils or glued to asphalt or concrete. Specific installation details can be found online at www.eco-blok.com.
- Ertec S-fence is installed perpendicular to sheet flow. The fencing is trenched in 3-in. and backfilled. The fencing is attached to wooden stakes placed at all overlaps or no more than 80-in. apart. Fencing is fixed to wooden stakes with drywall screws. Detailed installation instructions and drawings can be found online at www.ertecsystems.com.
- Curbing will be adopted as a storm water control where it exists and where it serves a useful function. The LANL storm water program will not install curbing.
- Retaining walls will be constructed to appropriate engineering standards.

Appendix B, Control Measure Fact Sheets (continued)

Inspection and Maintenance

Berms:

- Ensure berms are tall enough to handle expected flows.
- Ensure earth and base-course berms are compacted adequately.
- Inspect for effectiveness in performing designed function.
- Inspect for damage such as scour, vegetation loss, bank stability, debris build-up, erosion, and rock displacement.
- Inspect the outlet point for erosion or other damage.
- Repair any decrease in berm height from settling or erosion immediately.

Wattles:

- Ensure the rolls remain firmly anchored in place and are not crushed or damaged by equipment traffic.
- Check that they are trenched in and no gaps exist under the wattles.
- Check that wattles are adequately aligned with the next wattle. Either overlapped uphill of the next or doglegged.
- Repair or replace split, torn, unraveled, or slumping wattles.
- Repair rills or gullies upslope of the wattle and any undercutting.
- Additional wattles can be placed on top of existing ones to increase sediment capacity.

Retaining Walls:

- Inspect walls for cracks, slumping, or slope changes that negatively impact design function.
- Repair damage that compromises design function.

Failure Criteria

If control conditions meet the failure criteria, maintenance or replacement must be initiated to meet Individual Permit (IP) compliance.

Berms:

- Berm is significantly eroded, damaged, or breached such that its function is compromised.
- Berm has visible evidence of significant scouring to the base or outlet.

Wattles:

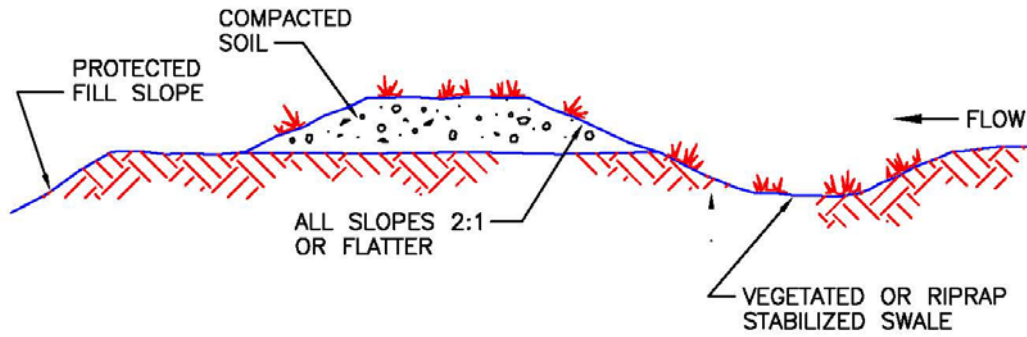
- Wattle is not firmly anchored to the ground.
- There are gaps under the wattle.
- The wattle has been damaged such that its function is compromised.

Retaining Walls:

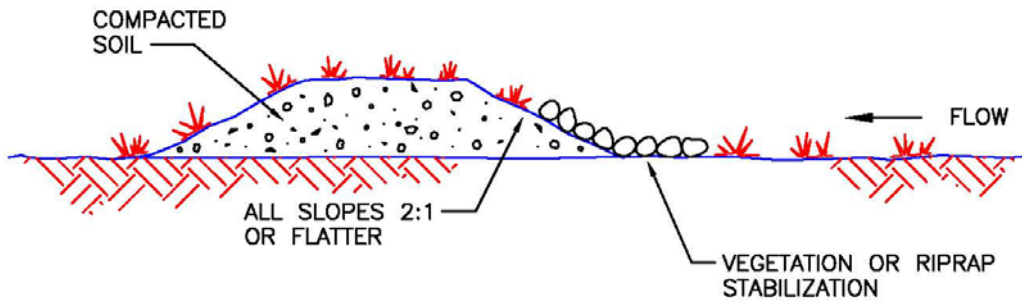
- Wall or portion of wall has collapsed or is damaged and is releasing material.

Appendix B, Control Measure Fact Sheets (continued)

EARTH BERM



TYPICAL FILL DIVERSION

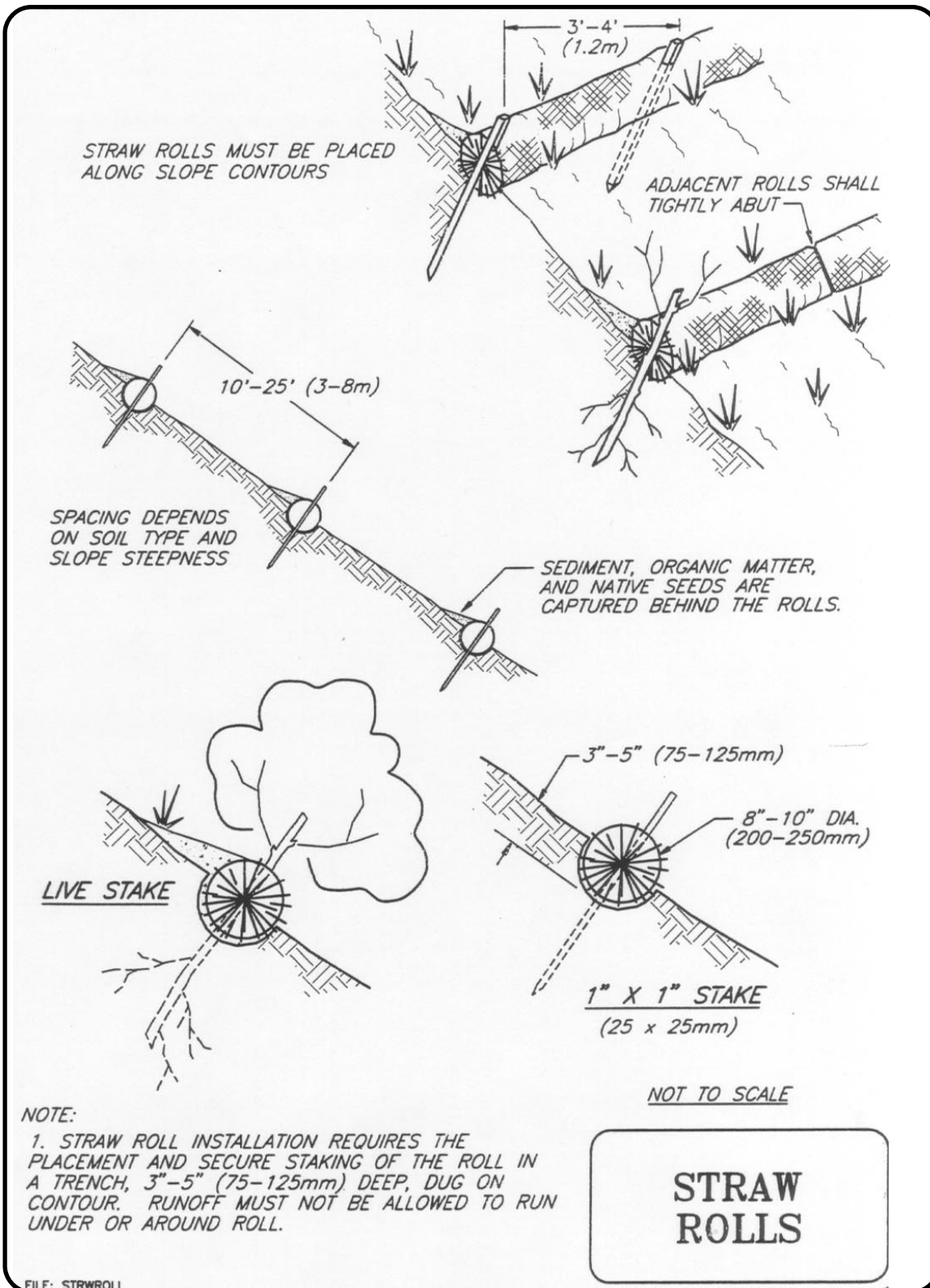


TYPICAL TEMPORARY DIVERSION DIKE

NOTES:

1. THE CHANNEL BEHIND THE BERM SHALL HAVE A POSITIVE GRADE TO A STABILIZED OUTLET.
2. THE BERM SHALL BE ADEQUATELY COMPACTED TO PREVENT FAILURE.
3. THE BERM SHALL BE STABILIZED WITH TEMPORARY OR PERMANENT SEEDING, MATTING, OR OTHER APPLICABLE MEASURES.

Appendix B, Control Measure Fact Sheets (continued)



Appendix B, Control Measure Fact Sheets (continued)

Channels and Swales

General Description

This category of storm water control includes earthen swales, concrete or asphalt swales, rock-lined (riprap) swales, vegetated swales, culverts, riprap outlet protection and water bars.

Control Function

Channels and swales are natural or constructed diversions that collect and convey concentrated flows of storm water runoff around an area. Lined channels or swales and culverts can also be used as erosion control if they transport storm water across a solid waste management unit (SWMU) or area of concern (AOC) without contacting it. Water bars are used to divert water off a roadway without blocking access. Riprap outlet protection is used to stabilize soil and sediment below a storm water source.

Construction Specifications/Installation Instructions

Materials:

- TRM, asphalt, concrete and riprap must be used for lined channels or swales. Earthen channels can be used for low flow run-on applications. Lined channels or swales should be used for high flow applications or any application transporting storm water across a SWMU or AOC.

Installation:

- Install channels and swales per the design drawings. Outlets shall be stabilized with riprap protection if appropriate.
- See vegetation and riprap field sheets for information on those types of channel and berm stabilization.
- Install culverts sized to the anticipated flow volumes. Outlets shall be stabilized with riprap protection, if appropriate.
- Install water bars per the design drawings. Water bars should be sized and spaced according to anticipated storm water volume. Water bar outlets may require riprap protection.
- Stones used in riprap should be angular to promote interlocking. If appropriate to the expected flow, use filter fabric underneath riprap applications.
- Riprap used in high-flow situations should be a minimum of 12 in. deep and should be placed in a trench excavated to 24 in. below the toe of the slope of the embankment or side of channel.

Inspection and Maintenance

- Ensure that channels and swales, culverts and water bars are sized to handle expected flows.
- Inspect control for effectiveness in controlling storm water runoff.
- Inspect control for damage such as scour, vegetation loss, bank stability, debris buildup, erosion, and rock displacement.
- Inspect the outlet point for erosion or other damage.

Appendix B, Control Measure Fact Sheets (continued)

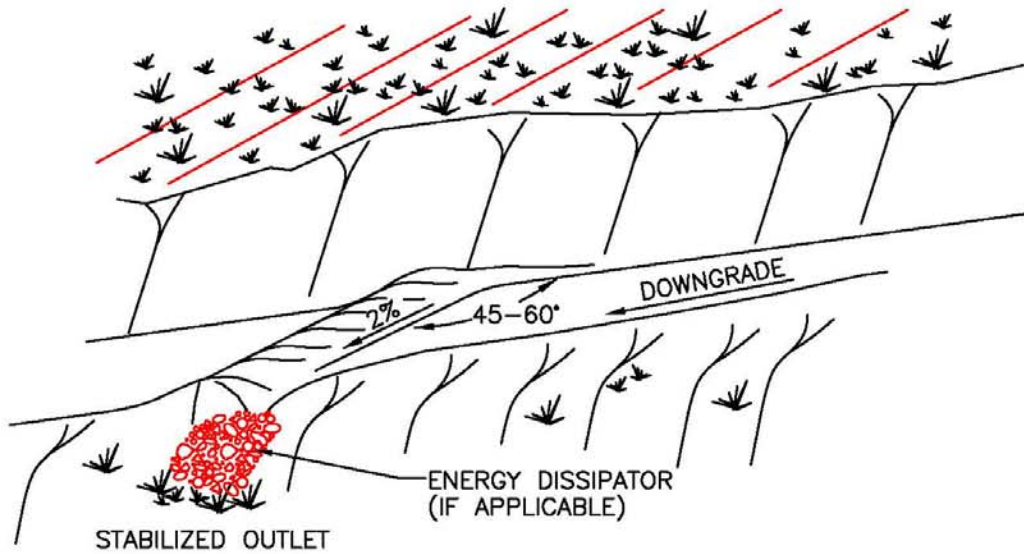
Failure Criteria

If control conditions meet the failure criteria, maintenance or replacement must be initiated to meet IP compliance.

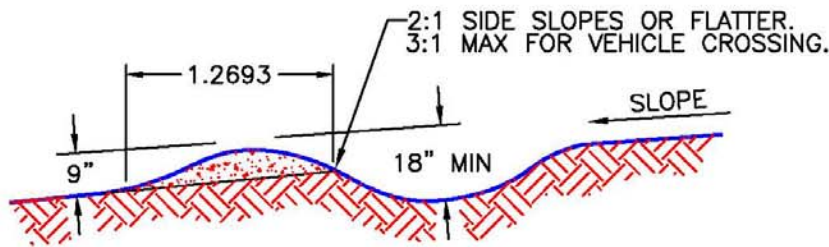
- Storm water has breached the control.
- The control has been damaged or degraded to the point where it is likely to be breached.
- The channel or swale lining been damaged or degraded resulting in scouring of underlying soils.
- There is significant scour at outlet of control.

Appendix B, Control Measure Fact Sheets (continued)

WATERBAR



WATERBAR



SECTION

NOTES:

1. FOR AREAS OF SIGNIFICANT VEHICULAR TRAFFIC, WATERBARS SHALL BE STABILIZED WITH GRAVEL.
2. DIVERSION BERMS SHOULD HAVE A MINIMUM POSITIVE GRADE OF 2%.
3. WATERBARS SHALL BE CONSTRUCTED AT AN ANGLE OF 46 TO 60 DEGREES FROM THE CENTERLINE.
4. WATERBARS SHALL OUTLET ONTO AREAS STABILIZED BY EITHER NATURAL OR CONSTRUCTED MEANS.

Appendix B, Control Measure Fact Sheets (continued)

Sediment Traps and Detention Basins

General Description

Sediment traps are used to detain sediment and runoff and release the runoff at a reduced rate through a controlled outlet structure. Sediment traps perform the same function as basins but are typically smaller in size and do not have pipe outlets.

Control Function

Sediment traps and detention basins are used primarily for sediment control. Under appropriate conditions, they may also be used for runoff control in the IP program.

Construction Specifications/Installation Instructions

Materials:

- Fill material for embankments should be free of roots, woody vegetation, and large stones.
- See vegetation and riprap sections for descriptions of those materials.
- For basins use the specified materials.

Installation:

- Detention basins should be designed by an engineer.
- Sediment trap cut and fill slopes should have a maximum slope of 3:1.
- Sediment trap outflow must discharge through a stabilized low point. Spillways should be designed to provide the trap with a 1.5 ft settling zone and a 1 ft sediment storage zone.
- The trap outlet area should be lined with filter fabric before of stone or gravel is emplaced. Stones used to construct the spillway should be between 6 and 12 in. in diameter and angular.
- Embankment fill material should be placed in 6 in. lifts and each lift compacted with a compactor or the appropriate earth moving equipment.
- Stabilize the embankment with seed and erosion control blankets, seed and hydromulch, or other appropriate stabilization.

Inspection and Maintenance

- Ensure that the outlet and spillway are lower than pond edges and are adequately stabilized.
- Inspect for effectiveness in controlling storm water runoff.
- Inspect inlet, outlet, and pond/trap slopes for damage such as vegetation loss, bank stability, debris build-up, erosion, and rock displacement.
- Inspect the inlet and outlet point for erosion or other damage. Inspect pipe outlets closely for debris.
- Sediment traps may require removal of deposited sediment from the trap floor and accumulated debris (trash, leaves, branches, etc.) at the outlet structure.

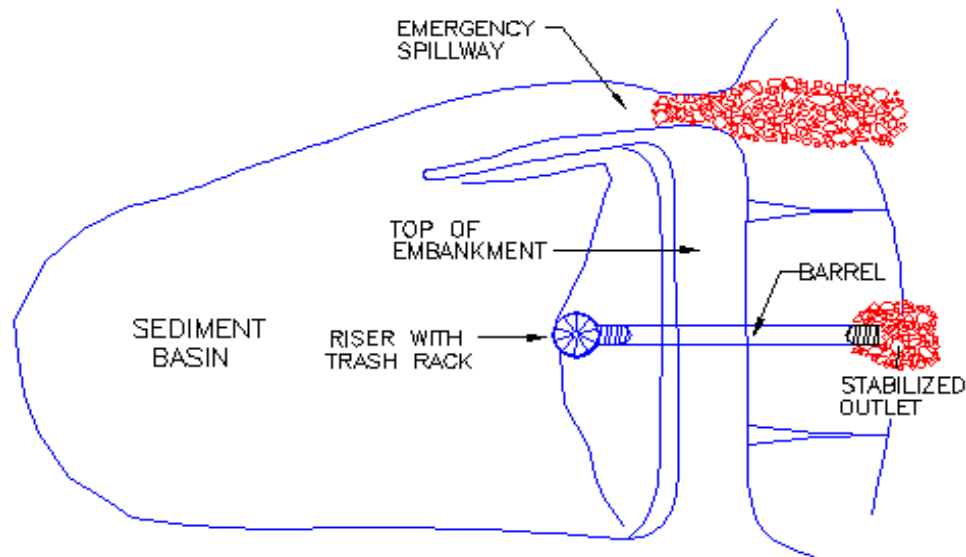
Appendix B, Control Measure Fact Sheets (continued)

Failure Criteria

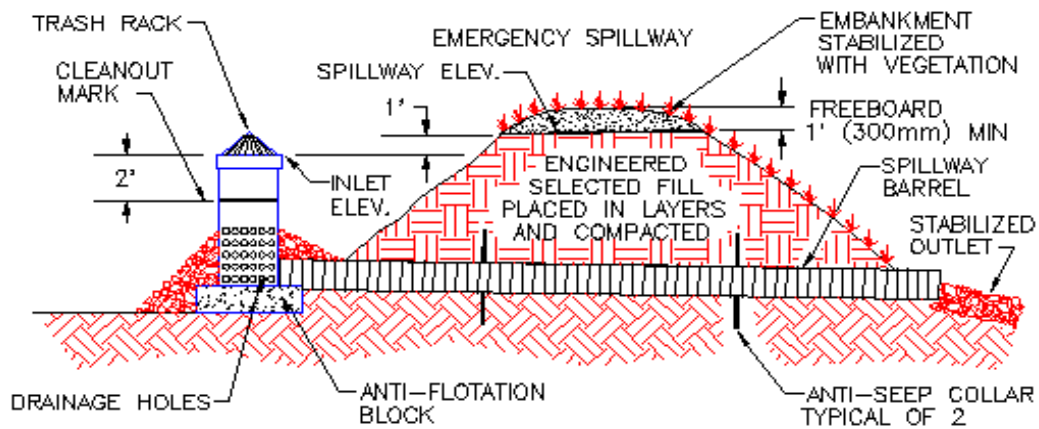
If control conditions meet the failure criteria, maintenance or replacement must be initiated to meet IP compliance.

- The basin outlet is plugged.
- The spillway or overflow is clogged or damaged.
- The control structure has been damaged or degraded and its function is compromised.

TYPICAL SEDIMENT BASIN



PLAN



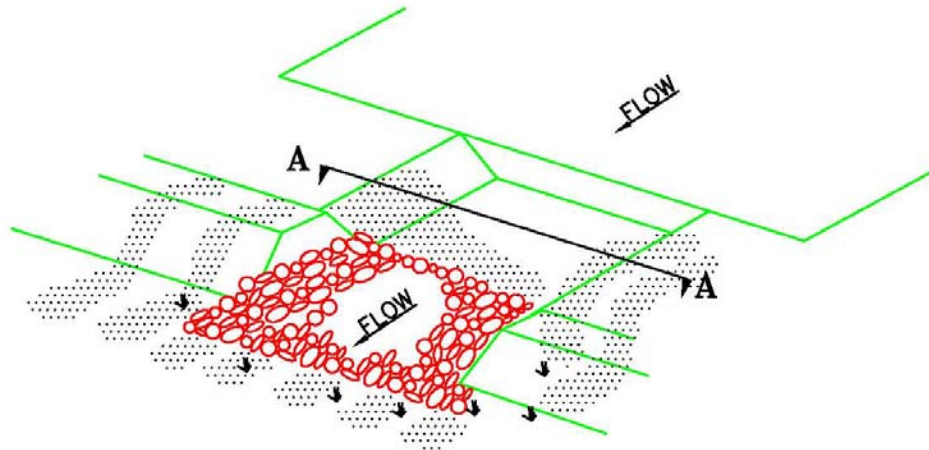
SECTION

NOTES:

1. BASINS SHALL BE USED FOR AREAS GREATER THAN 5 ACRES IN SIZE.
2. ENSURE THAT FILL MATERIAL FOR EMBANKMENTS IS FREE OF ROOTS, WOODY VEGETATION, AND LARGE STONES.
3. LINE THE BASIN OUTLET AREA WITH FILTER FABRIC PRIOR TO PLACEMENT OF STONE OR GRAVEL.
4. ENSURE THAT THE EMERGENCY SPILLWAY IS NOT CONSTRUCTED FROM FILL MATERIAL.
5. STABILIZE EMBANKMENTS AND EMERGENCY SPILLWAY WITH SEED, MULCH, MATTING, OR OTHER APPLICABLE MEASURES.

Appendix B, Control Measure Fact Sheets (continued)

SEDIMENT TRAP



PERSPECTIVE VIEW



SECTION A - A

NOTE:

1. CUT AND FILL SLOPES IN TRAPS SHALL BE 3:1 OR FLATTER.
2. ENSURE THAT FILL MATERIAL FOR EMBANKMENTS IS FREE OF ROOTS, WOODY VEGETATION, AND LARGE STONES.
3. STABILIZE EMBANKMENTS WITH SEED, MULCH, MATTING, OR OTHER APPLICABLE MEASURE.
4. LINE THE TRAP OUTLET AREA WITH FILTER FABRIC PRIOR TO PLACEMENT OF STONE OR GRAVEL.
5. SEDIMENT TRAPS SHALL NOT BE USED FOR DRAINAGE AREAS EXCEEDING 5 ACRES IN SIZE.

Appendix B, Control Measure Fact Sheets (continued)

Check Dams

General Description

This category of storm water control includes rock and log check dams and juniper bales. Note: Straw check dams and silt fence will not be used.

Control Function

Check dams are used primarily for sediment control but may also be used in small channels for run-on and runoff control.

Construction Specifications/Installation Instructions

Materials:

- When using rock, the material diameter should be 6- to 15-in. angular rock.
- Logs should have a diameter of 6 to 8 in.

Installation:

- Check dams should be placed at a distance and height to allow water ponding from downstream check dam to reach the toe of the upstream dam.
- High flows (typically a 2-yr storm or larger) should safely flow over the check dam without an increase in upstream flooding or damage to the check dam.
- A check dam should not be more than 3 ft high, and the center of the dam should be at least 6 in. lower than its edges.
- Dams can be made more stable by entrenching the material approximately 6 in. into the sides and bottom of the channel.
- Rock should be placed individually by hand or by mechanical methods (no dumping of rock).
- Juniper bales should be embedded in a trench that has been excavated to a minimum depth of 4 in. Backfill material shall be firmly compacted. Bales should tightly abut one another. The bales should be anchored in place with wooden stakes through each bale.
- If necessary, construct scour protection on the downstream side of the dam to reduce downstream erosion (rock apron, TRM, etc.)

Inspection and Maintenance

- Verify that the check dam is located in a defined channel to reduce flow velocity or retain sediment.
- The center of a check dam should always be lower than its edges and the top of the channel.
- If high flows are expected, ensure scour protection has been installed on the downstream of the check dam.
- Check for damage and erosion caused by flows around or under the dam structure.

Appendix B, Control Measure Fact Sheets (continued)

- The center of a check dam should always be lower than its edges. Additional stone may have to be added to maintain the correct height. Repair erosion around a check dam and lower the center if required.
- During inspection, remove large debris, trash, and leaves.

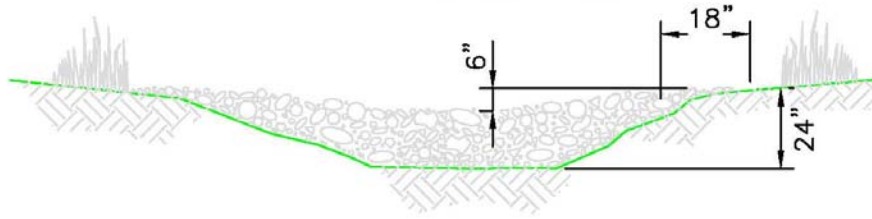
Failure Criteria

If control conditions meet the failure criteria, maintenance or replacement must be initiated to meet IP compliance.

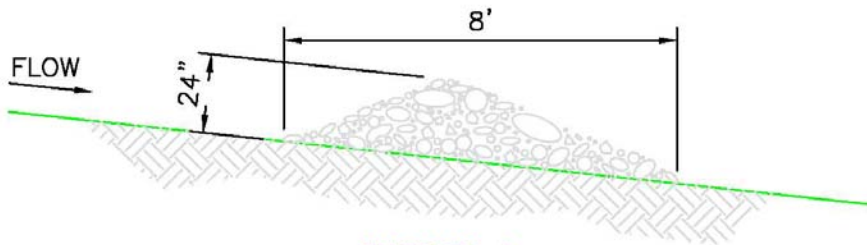
- Storm water has scoured channel around or under the check dam control.
- Storm water has scoured channel below the check dam control.
- Debris is blocking check dam control enough to compromise its function.
- Check dam control has been damaged or degraded enough to compromise its function.

Appendix B, Control Measure Fact Sheets (continued)

ROCK CHECK DAM

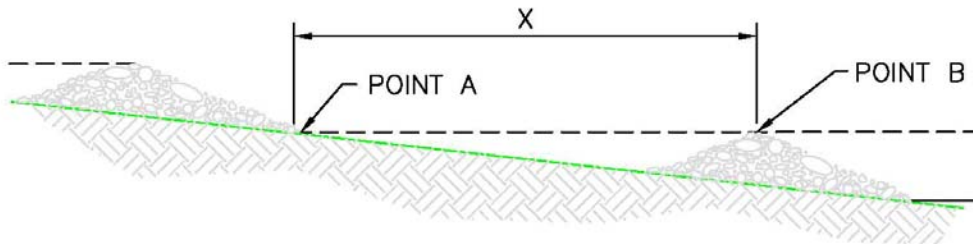


VIEW LOOKING UPSTREAM



SECTION A

X = THE DISTANCE SUCH THAT POINT A AND B ARE OF EQUAL ELEVATION.



SPACING BETWEEN CHECK DAMS

NOTES:

1. ROCK CHECK DAMS SHALL BE CONSTRUCTED WITH 6–15 INCH MAXIMUM SIZE ANGULAR AGGREGATE ROCK.
2. WHERE APPLICABLE, KEY STONE INTO CHANNEL BANKS AND EXTEND IT BEYOND THE ABUTMENTS A MINIMUM OF 18" TO PREVENT FLOW AROUND DAM.
3. PROVIDE AN ENERGY DISSIPATOR ON THE DOWNSTREAM SIDE OF THE DAM TO REDUCE DOWNSTREAM EROSION.

Appendix B, Control Measure Fact Sheets (continued)

Gabions

General Description

This category of storm water control includes gabions and gabion blankets.

Control Function

Gabions are used for sediment control when installed perpendicular to the storm water flow as with a check dam. Gabions and gabion blankets are used for erosion control when they line a channel or swale.

Construction Specifications/Installation Instructions

Materials:

- Stones are usually rounded river rock and are well graded to promote interlocking.
- Gabions should be filled with minimum of 3 to 5 in. stone.
- Gabion mattresses should be filled with 4 to 8 in. stone.
- Baskets shall be constructed of wire mesh specified for this purpose, and baskets are attached to each other with proper fasteners.
- Filter fabric must be used underneath.
- Use steel railroad rails, standard weight galvanized steel pipe, or steel angles minimum 4 in. x 4 in. x 3/8 in. for stakes to anchor to the ground

Installation:

- Gabion installation should be done in accordance with the design requirements and manufacturer's standards and specifications. Additional general information on gabion installation follows:
 - ❖ For channel stabilization place in a trench excavated to 24 in. below the toe of the slope of the embankment or side of channel. Brush, trees, stumps, and other objects that would interfere with placement should be removed. Excavate loose material as necessary to establish a stable foundation for each structure.
 - ❖ Use filter fabric under the gabions, connect joints with a minimum overlap of 1 ft, and space anchor pins approximately every 3 ft along the overlap. The ends of the fabric shall be buried to a minimum depth of 12 in.
 - ❖ Gabions and gabion mattresses shall be secured to the channel bed.
 - ❖ When gabions are assembled, corners should be first joined together. Untied edges shall be assembled by tying with lacing wire or approved fasteners. Gabion baskets should be joined to each other along adjacent edges, both horizontally and vertically.

Appendix B, Control Measure Fact Sheets (continued)

Inspection and Maintenance

- Check that filter fabric was used under the gabion.
- Check that the gabion is anchored to the ground.
- Check that gabions are fastened to each other.
- Check that the baskets are adequately filled with no voids or bulges.
- Check that adjacent slopes have been filled adequately to prevent erosion and scour around the edges of the structure.
- Inspect for erosion and scour around and beneath the gabions.
- Check for excessive slumping, gabions are flexible and minor settling can be accommodated.
- Check for corroding wire mesh.
- Check for excessive growth of bushes, trees, and other vegetation that may damage gabions.

Failure Criteria

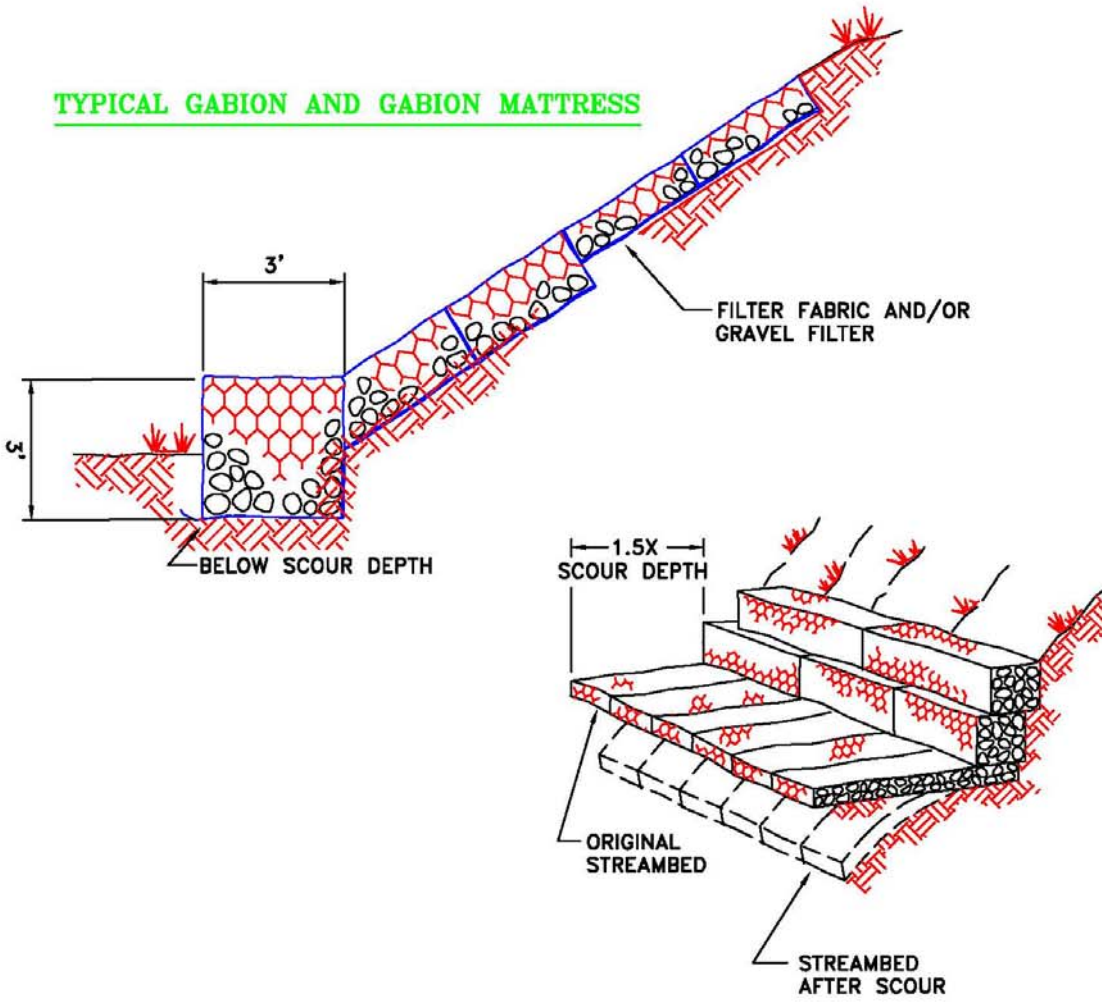
If control conditions meet the failure criteria, maintenance or replacement must be initiated to meet IP compliance.

- Storm water has scoured around or beneath the gabion structure.
- Gabion structure has been damaged or degraded enough to compromise its function.

Appendix B, Control Measure Fact Sheets (continued)

GABIONS

TYPICAL GABION AND GABION MATTRESS



TYPICAL GABION APRON

NOTES:

1. WHEN ASSEMBLING GABIONS, FASTEN CORNERS TOGETHER FIRST.
2. SECURE GABIONS TO STREAMBANK OR STREAMBED TO MINIMIZE SCOUR BENEATH OR AROUND THE STRUCTURES.
3. EXCAVATE LOOSE MATERIAL TO ESTABLISH A STABLE FOUNDATION.
4. MINIMIZE VOIDS AND BULGES IN THE GABIONS.

Appendix B, Control Measure Fact Sheets (continued)

Permanent Caps

General Description

This category of storm water control includes earth, rock, and asphalt caps.

Control Function

Caps are used primarily for erosion control and to isolate areas of potential soil contamination from storm water.

Construction Specifications/Installation Instructions

Materials:

- Materials used for capping must be obtained from an uncontaminated source.

Installation:

- Earthen caps must be at least 24 in. thick and should be vegetated or covered with rock or gravel to protect the cap from erosion.
- Asphalt caps should be a minimum of 4-in. thick.

Inspection and Maintenance

- There are areas of potential damage on the cap—scour, cracks, trees, or large bushes.
- Run-on and runoff controls should be in good condition—caps should be constructed with diversions and runoff erosion controls. Look for cracks and missing sections that could allow water to cross the site or get under the cap.
- Areas of erosion/headcutting are within 50 ft of the capped area and could migrate towards the cap.
- There are new human-caused impacts to the area.
- There are animal impacts to the area, such as burrows, ant hills.

Failure Criteria

If control conditions meet the failure criteria, maintenance or replacement must be initiated to meet IP compliance.

- The cap is damaged or degraded exposing the soil beneath.
- Erosion is scouring under the cap.

Appendix C

Understanding the Analytical Results Plots

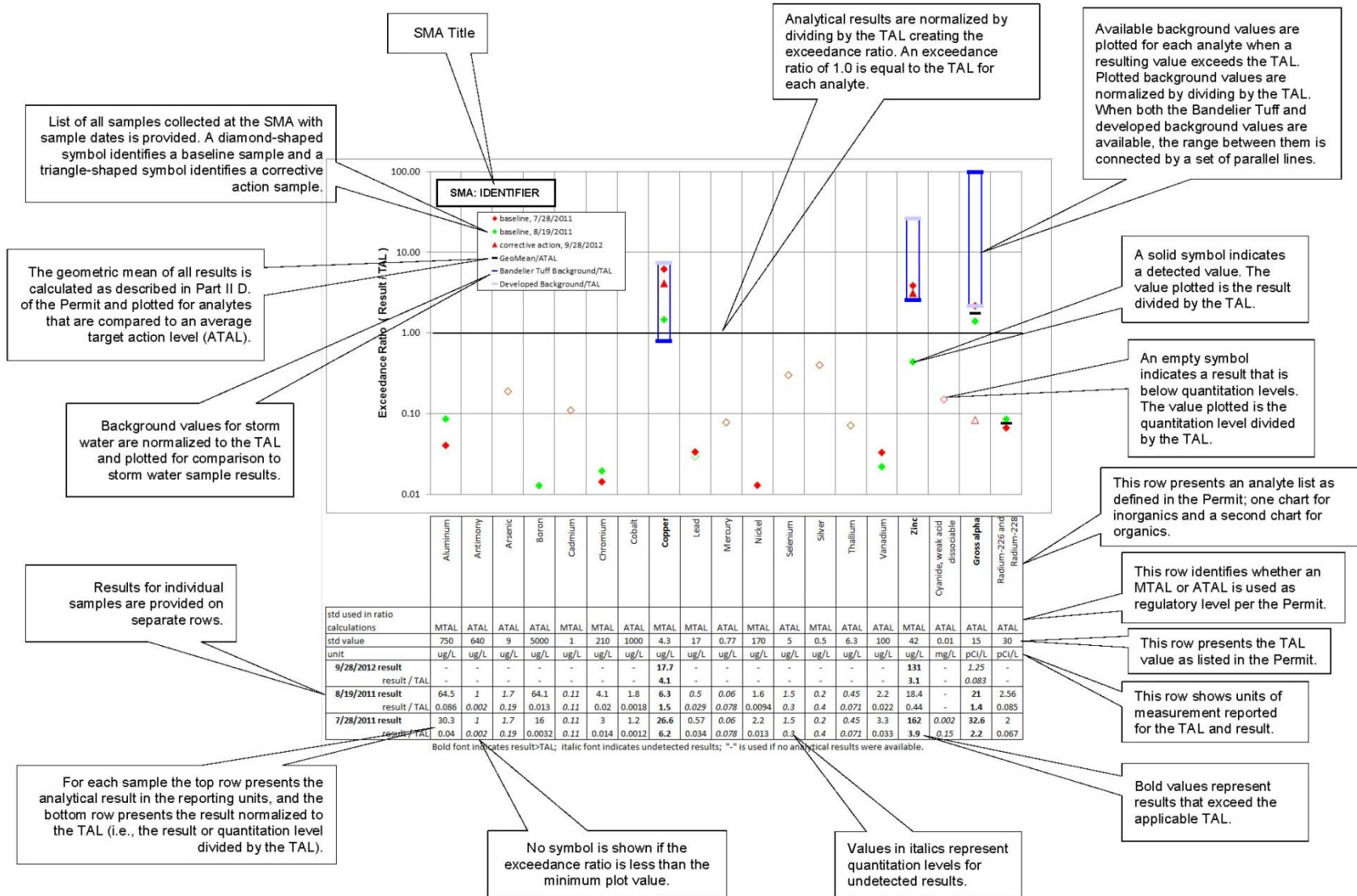
For each site monitoring area (SMA) where storm water samples were collected and analyzed in 2011 and 2012, the analytical results plots have been prepared. The purpose of the analytical plots is to present the analytical results in a manner which allows direct comparison with the target action levels (TALs) as defined in the Individual Permit. Data are presented in one or more plots. The first plot contains results for all metals, weak acid dissociable cyanide, and gross alpha and radium, and the second presents the results for organic compounds, if analyzed. The organic plot is presented only if one or more groups of organic compounds were analyzed in the storm water sample collected at the Site and associated SMA per the requirements set forth in Appendix B of the Permit.

Analytical results for each analyte presented on the plots are normalized by calculating an exceedance ratio. This ratio is defined as the analytical result divided by applicable TAL. Thus, results exceeding the TAL will be greater than an exceedance ratio of 1.0. The exceedance ratios are plotted on a log scale to allow the viewing of a larger range of values. A solid symbol on the plot represents a result that is detected above the practical quantitation limit (PQL), while an empty symbol represents a value that is considered a nondetect. In a few instances, an empty symbol is plotted above an exceedance ratio of 1.0. In these cases, the value is nondetect and is represented graphically by the PQL. The PQL is normally 3 to 6 times the method detection limit (MDL) and is considered the lowest concentration that can be accurately quantified rather than simply detected. Since the MDL (i.e., the value above which an analyte is considered detected) is lower than the PQL, the MDL can detect an analyte to a level 3 to 6 times below the PQL value that is represented by the plotted symbol.

Background storm water values for some metals, gross alpha, and polychlorinated biphenyls (PCBs), where available, are also plotted to provide additional points of reference when evaluating the significance of the analytical result. The process for the determination of the background storm water values is presented in a report prepared by Los Alamos National Laboratory on PCBs in storm water (LANL 2012, 219767) and another report on metals and selected radionuclides in storm water (LANL 2013, 239557).

The following schematic provides more specific details related to individual components of the analytical results plots.

Appendix C, Understanding the Analytical Results Plots (continued)



Appendix D References

The following lists include all documents cited in this plan. Parenthetical information following each reference provides the author(s), publication date, and ER ID. This information is also included in text citations. ER IDs are assigned by the Environmental Programs Directorate's Records Processing Facility (RPF) and are used to locate the document at the RPF.

Overview

- LANL (Los Alamos National Laboratory), March 28, 2011. "Site Discharge Pollution Prevention Plan, Los Alamos National Laboratory, NPDES Permit No. NM0030759, March 28, 2011, Volume 5, Ancho/Chaquehui Watershed," Environmental Programs document no. EP-DIR-PLAN-10007, R.0, Los Alamos National Laboratory document LA-UR-11-1555, Los Alamos, New Mexico. (LANL 2011, 206304)
- LANL (Los Alamos National Laboratory), April 5, 2011. "Site Discharge Pollution Prevention Plan, Los Alamos National Laboratory, NPDES Permit No. NM0030759, April 5, 2011, Volume 3, Pajarito Watershed," Environmental Programs document no. EP-DIR-PLAN-10005, R.0, Los Alamos National Laboratory document LA-UR-11-1553, Los Alamos, New Mexico. (LANL 2011, 206303)
- LANL (Los Alamos National Laboratory), April 7, 2011. "Site Discharge Pollution Prevention Plan, Los Alamos National Laboratory, NPDES Permit No. NM0030759, April 7, 2011, Volume 4, Water Canyon and Cañon de Valle Watershed," Environmental Programs document no. EP-DIR-PLAN-10006, R.0, Los Alamos National Laboratory document LA-UR-11-1554, Los Alamos, New Mexico. (LANL 2011, 204887)
- LANL (Los Alamos National Laboratory), April 14, 2011. "Site Discharge Pollution Prevention Plan, Los Alamos National Laboratory, NPDES Permit No. NM0030759, April 14, 2011, Volume 2, Sandia/Mortandad Watershed," Environmental Programs document no. EP-DIR-PLAN-10004, R.0, Los Alamos National Laboratory document LA-UR-11-1552, Los Alamos, New Mexico. (LANL 2011, 206302)
- LANL (Los Alamos National Laboratory), April 18, 2011. "Site Discharge Pollution Prevention Plan, Los Alamos National Laboratory, NPDES Permit No. NM0030759, April 18, 2011, Volume 1, Los Alamos/Pueblo Watershed," Environmental Programs document no. EP-DIR-PLAN-10003, R.0, Los Alamos National Laboratory document LA-UR-11-1551, Los Alamos, New Mexico. (LANL 2011, 206301)
- LANL (Los Alamos National Laboratory), May 2012. "Polychlorinated Biphenyls in Precipitation and Stormwater within the Upper Rio Grande Watershed," Los Alamos National Laboratory document LA-UR-12-1081, Los Alamos, New Mexico. (LANL 2012, 219767)
- LANL (Los Alamos National Laboratory), May 1, 2012. "Site Discharge Pollution Prevention Plan, Los Alamos National Laboratory, NPDES Permit No. NM0030759, May 1, 2012, LA-UR-12-20497, Revision 1, Los Alamos/Pueblo Watershed, Receiving Waters: Rendija Canyon, Bayo Canyon, Pueblo Canyon, DP Canyon, Los Alamos Canyon, Volume 1," Los Alamos National Laboratory, Los Alamos, New Mexico. (LANL 2012, 215105)

Appendix D, References (continued)

Overview (continued)

- LANL (Los Alamos National Laboratory), May 1, 2012. "Site Discharge Pollution Prevention Plan, Los Alamos National Laboratory, NPDES Permit No. NM0030759, May 1, 2012, LA-UR-12-20798, Revision 1, Sandia/Mortandad Watershed, Receiving Waters: Cañada del Buey, Mortandad Canyon, Sandia Canyon, Ten Site Canyon, Volume 2," Los Alamos National Laboratory, Los Alamos, New Mexico. (LANL 2012, 215106)
- LANL (Los Alamos National Laboratory), May 1, 2012. "Site Discharge Pollution Prevention Plan, Los Alamos National Laboratory, NPDES Permit No. NM0030759, May 1, 2012, LA-UR-12-20395, Revision 1, Pajarito Watershed, Receiving Waters: Pajarito Canyon, Twomile Canyon, Threemile Canyon, Volume 3," Los Alamos National Laboratory, Los Alamos, New Mexico. (LANL 2012, 215107)
- LANL (Los Alamos National Laboratory), May 1, 2012. "Site Discharge Pollution Prevention Plan, Los Alamos National Laboratory, NPDES Permit No. NM0030759, May 1, 2012, LA-UR-12-20224, Revision 1, Water/Cañon de Valle Watershed, Receiving Waters: Cañon de Valle, Potrillo Canyon, Water Canyon, Fence Canyon, Volume 4," Los Alamos National Laboratory, Los Alamos, New Mexico. (LANL 2012, 215108)
- LANL (Los Alamos National Laboratory), May 1, 2012. "Site Discharge Pollution Prevention Plan, Los Alamos National Laboratory, NPDES Permit No. NM0030759, May 1, 2012, LA-UR-12-00849, Revision 1, Ancho/Chaquehui Watershed, Receiving Waters: Ancho Canyon and Chaquehui Canyon, Volume 5," Los Alamos National Laboratory, Los Alamos, New Mexico. (LANL 2012, 215109)
- LANL (Los Alamos National Laboratory), March 2013. "Storm Water Individual Permit Annual Report, Reporting Period: January 1–December 31, 2012, NPDES Permit No. NM0030759," Los Alamos National Laboratory document LA-UR-13-20566, Los Alamos, New Mexico. (LANL 2013, 237680)
- LANL (Los Alamos National Laboratory), April 2013. "Background Metals Concentrations and Radioactivity in Storm Water on the Pajarito Plateau, Northern New Mexico," Los Alamos National Laboratory document LA-UR-13-22841, Los Alamos, New Mexico. (LANL 2013, 239557)

Appendix D, References (continued)

Volume 1

- LANL (Los Alamos National Laboratory), May 1992. "RFI Work Plan for Operable Unit 1071," Los Alamos National Laboratory document LA-UR-92-810, Los Alamos, New Mexico. (LANL 1992, 007667)
- LANL (Los Alamos National Laboratory), May 1992. "RFI Work Plan for Operable Unit 1079," Los Alamos National Laboratory document LA-UR-92-850, Los Alamos, New Mexico. (LANL 1992, 007668)
- LANL (Los Alamos National Laboratory), May 1992. "RFI Work Plan for Operable Unit 1078," Los Alamos National Laboratory document LA-UR-92-838, Los Alamos, New Mexico. (LANL 1992, 043454)
- LANL (Los Alamos National Laboratory), June 1993. "RFI Work Plan for Operable Unit 1098," Los Alamos National Laboratory document LA-UR-92-3825, Los Alamos, New Mexico. (LANL 1993, 015314)
- LANL (Los Alamos National Laboratory), March 1994. "RFI Phase Report, Operable Unit 1071, SWMU Aggregate 0-D, Ordnance Impact Areas," Los Alamos National Laboratory, Los Alamos, New Mexico. (LANL 1994, 059427)
- LANL (Los Alamos National Laboratory), November 1995. "Task/Site Work Plan for Operable Unit 1049, Los Alamos Canyon and Pueblo Canyon," Los Alamos National Laboratory document LA-UR-95-2053, Los Alamos, New Mexico. (LANL 1995, 050290)
- LANL (Los Alamos National Laboratory), May 5, 1995. "RFI Report for PRS 31-001," Los Alamos National Laboratory document LA-UR-95-1542, Los Alamos, New Mexico. (LANL 1995, 058085)
- LANL (Los Alamos National Laboratory), June 12, 1995. "RFI Report for PRSs 1-002, 45-001, 45-002, 45-003, 45-004, C-45-001," Los Alamos National Laboratory document LA-UR-95-1542, Los Alamos, New Mexico. (LANL 1995, 048856)
- LANL (Los Alamos National Laboratory), September 5, 1995. "RFI Report for Solid Waste Management Units 10-001(a-d)," Los Alamos National Laboratory, Los Alamos, New Mexico. (LANL 1995, 049974)
- LANL (Los Alamos National Laboratory), April 1996. "Interim Action Report for TA-10, Bayo Canyon Shrapnel," Los Alamos National Laboratory document LA-UR-96-1088, Los Alamos, New Mexico. (LANL 1996, 054491)
- LANL (Los Alamos National Laboratory), September 1996. "RFI Report for Potential Release Sites 2-004(a through f), 2-008(b), and 2-012," Los Alamos National Laboratory document LA-UR-96-3155, Los Alamos, New Mexico. (LANL 1996, 055226)
- LANL (Los Alamos National Laboratory), September 1996. "Phase II and Voluntary Corrective Action Report for Potential Release Sites at TA-32: 32-001, Former Incinerator; 32-002(a,b), Former Septic Systems; 32-003, Former Transformer; 32-004, Former Radioactive Source Vault, Drain Line, and Outfall," Los Alamos National Laboratory document LA-UR-96-3128, Los Alamos, New Mexico. (LANL 1996, 059178)
- LANL (Los Alamos National Laboratory), September 1997. "RFI Report for PRSs 0-018(a,b), Wastewater Treatment Plants," Los Alamos National Laboratory document LA-UR-97-3319, Los Alamos, New Mexico. (LANL 1997, 056614)

Appendix D, References (continued)

Volume 1 (continued)

- LANL (Los Alamos National Laboratory), June 8, 1999. "Identification of New PRSs," Los Alamos National Laboratory letter (EM/ER:99-147) to J. Bearzi (NMED-HRMB) from J.A. Canepa (LANL) and T.J. Taylor (DOE-LAAO), Los Alamos, New Mexico. (LANL 1999, 063395)
- LANL (Los Alamos National Laboratory), July 2000. "Decommissioning Completion Report for Buildings 4, 46, 49, 50, 53, 54, 55, 56, 57, 69, and 88 at TA-02, Omega Site, Flood Control Project," draft, Los Alamos National Laboratory, Los Alamos, New Mexico. (LANL 2000, 090087)
- LANL (Los Alamos National Laboratory), March 2001. "TA-2 Sampling and Soil Removal, Final Closeout Report," Los Alamos National Laboratory document LA-UR-01-1243, Los Alamos, New Mexico. (LANL 2001, 070352)
- LANL (Los Alamos National Laboratory), September 2001. "Phase II RFI Report for Potential Release Site 21-029, DP Tank Farm," Los Alamos National Laboratory document LA-UR-01-5254, Los Alamos, New Mexico. (LANL 2001, 071303)
- LANL (Los Alamos National Laboratory), December 13, 2001. "Response to Request for Supplemental Information for the Phase II RFI Report for Potential Release Site 21-029, DP Tank Farm," Los Alamos National Laboratory document LA-UR-01-6737, Los Alamos, New Mexico. (LANL 2001, 073436)
- LANL (Los Alamos National Laboratory), April 2004. "Los Alamos and Pueblo Canyons Investigation Report," Los Alamos National Laboratory document LA-UR-04-2714, Los Alamos, New Mexico. (LANL 2004, 087390)
- LANL (Los Alamos National Laboratory), May 2005. "Pueblo Canyon Aggregate Area Investigation Work Plan," Los Alamos National Laboratory document LA-UR-05-2366, Los Alamos, New Mexico. (LANL 2005, 090579)
- LANL (Los Alamos National Laboratory), July 2005. "Historical Investigation Report for Technical Area 10," Los Alamos National Laboratory document LA-UR-05-3955, Los Alamos, New Mexico. (LANL 2005, 089658)
- LANL (Los Alamos National Laboratory), July 2005. "Investigation Work Plan for Bayo Canyon Aggregate Area," Los Alamos National Laboratory document LA-UR-05-4761, Los Alamos, New Mexico. (LANL 2005, 089659)
- LANL (Los Alamos National Laboratory), September 30, 2005. "Submittal of Revisions to the 'Investigation Work Plan for Delta Prime Site Aggregate Area, at Technical Area 21'," Los Alamos National Laboratory letter (ER2005-0475) to J.P. Bearzi (NMED HWB) from D. McInroy (ERS Deputy Program Director) and D. Gregory (DOE-LASO), Los Alamos, New Mexico. (LANL 2005, 090225)
- LANL (Los Alamos National Laboratory), December 2005. "Los Alamos and Pueblo Canyons Supplemental Investigation Report," Los Alamos National Laboratory document LA-UR-05-9230, Los Alamos, New Mexico. (LANL 2005, 091818)
- LANL (Los Alamos National Laboratory), April 2006. "Investigation Work Plan for Upper Los Alamos Canyon Aggregate Area," Los Alamos National Laboratory document LA-UR-06-2464, Los Alamos, New Mexico. (LANL 2006, 091916)

Appendix D, References (continued)

Volume 1 (continued)

- LANL (Los Alamos National Laboratory), April 2006. "Historical Investigation Report for Upper Los Alamos Canyon Aggregate Area," Los Alamos National Laboratory document LA-UR-06-2465, Los Alamos, New Mexico. (LANL 2006, 091915)
- LANL (Los Alamos National Laboratory), May 2006. "Investigation Work Plan for Middle Los Alamos Canyon Aggregate Area, Revision 1," Los Alamos National Laboratory document LA-UR-06-3015, Los Alamos, New Mexico. (LANL 2006, 092571.12)
- LANL (Los Alamos National Laboratory), August 2007. "Investigation Report for Guaje/Barrancas/Rendija Canyons Aggregate Area at Technical Area 00," Los Alamos National Laboratory document LA-UR-07-5326, Los Alamos, New Mexico. (LANL 2007, 098670)
- LANL (Los Alamos National Laboratory), November 2007. "Investigation Report for Guaje/Barrancas/Rendija Canyons Aggregate Area at Technical Area 00, Revision 1," Los Alamos National Laboratory document LA-UR-07-7820, Los Alamos, New Mexico. (LANL 2007, 099954)
- LANL (Los Alamos National Laboratory), November 2007. "Delta Prime Site Aggregate Area Investigation Report," Los Alamos National Laboratory document LA-UR-07-5459, Los Alamos, New Mexico. (LANL 2007, 099175)
- LANL (Los Alamos National Laboratory), March 2008. "Delta Prime Site Aggregate Area Investigation Report, Revision 1," Los Alamos National Laboratory document LA-UR-08-1834, Los Alamos, New Mexico. (LANL 2008, 102760)
- LANL (Los Alamos National Laboratory), March 2008. "Investigation Report for Bayo Canyon Aggregate Area," Los Alamos National Laboratory document LA-UR-08-1134, Los Alamos, New Mexico. (LANL 2008, 102793)
- LANL (Los Alamos National Laboratory), May 2008. "Investigation Report for Middle Los Alamos Canyon Aggregate Area, Revision 1," Los Alamos National Laboratory document LA-UR-08-2725, Los Alamos, New Mexico. (LANL 2008, 101669.12)
- LANL (Los Alamos National Laboratory), July 2008. "Investigation Report for Pueblo Canyon Aggregate Area, Revision 1," Los Alamos National Laboratory document LA-UR-08-4765, Los Alamos, New Mexico. (LANL 2008, 103243.34)
- LANL (Los Alamos National Laboratory), August 18, 2008. "Response to Direction to Modify Bayo Canyon Aggregate Area Investigation Report, Revision 1," Los Alamos National Laboratory letter (EP2008-0404) to J.P. Bearzi (NMED-HWB) from S.G. Stiger (LANL) and D. Gregory (DOE-LASO), Los Alamos, New Mexico. (LANL 2008, 103202)
- LANL (Los Alamos National Laboratory), October 2008. "Pueblo Canyon Aggregate Area Phase II Investigation Work Plan," Los Alamos National Laboratory document LA-UR-08-6722, Los Alamos, New Mexico. (LANL 2008, 104580)
- LANL (Los Alamos National Laboratory), November 2008. "Los Alamos Site Monitoring Area 2 Interim Measure and Monitoring Plan," Los Alamos National Laboratory document LA-UR-08-6891, Los Alamos, New Mexico. (LANL 2008, 104020)

Appendix D, References (continued)

Volume 1 (continued)

- LANL (Los Alamos National Laboratory), December 2008. "Delta Prime Site Aggregate Area Phase II Work Plan, Revision 1," Los Alamos National Laboratory document LA-UR-08-7794, Los Alamos, New Mexico. (LANL 2008, 104989)
- LANL (Los Alamos National Laboratory), February 2009. "Work Plan for Installation of Stormwater Controls at Area of Concern 00-030(f)," Los Alamos National Laboratory document LA-UR-09-0794, Los Alamos, New Mexico. (LANL 2009, 105088)
- LANL (Los Alamos National Laboratory), February 2009. "Phase II Investigation Work Plan for Middle Los Alamos Canyon Aggregate Area, Revision 1," Los Alamos National Laboratory document LA-UR-09-1206, Los Alamos, New Mexico. (LANL 2009, 105073)
- LANL (Los Alamos National Laboratory), December 2009. "2009 Biennial Ordnance Survey Report, Solid Waste Management Units 00-011(a, c, d, and e) and Area of Concern C-00-020, Guaje/Barrancas/Rendija Canyons Aggregate," Los Alamos National Laboratory document LA-UR-09-8186, Los Alamos, New Mexico. (LANL 2009, 108171)
- LANL (Los Alamos National Laboratory), December 2009. "Accelerated Corrective Action Work Plan for Upper Los Alamos Canyon Aggregate Area, Former Technical Area 32," Los Alamos National Laboratory document LA-UR-09-8056, Los Alamos, New Mexico. (LANL 2009, 108332)
- LANL (Los Alamos National Laboratory), February 2010. "Investigation Report for Upper Los Alamos Canyon Aggregate Area, Revision 1," Los Alamos National Laboratory document LA-UR-10-0422, Los Alamos, New Mexico. (LANL 2010, 108528)
- LANL (Los Alamos National Laboratory), May 2010. "Interim Measure Report for Solid Waste Management Unit 01-001(f) and Los Alamos Site Monitoring Area 2," Los Alamos National Laboratory document LA-UR-10-2641, Los Alamos, New Mexico. (LANL 2010, 109422)
- LANL (Los Alamos National Laboratory), July 2010. "Delta Prime East Building Footprints Letter Work Plan, Revision 1," Los Alamos National Laboratory document LA-UR-10-4812, Los Alamos, New Mexico. (LANL 2010, 110082.4)
- LANL (Los Alamos National Laboratory), October 2010. "Phase II Investigation Report for Delta Prime Site Aggregate Area at Technical Area 21, Revision 1," Los Alamos National Laboratory document LA-UR-10-6478, Los Alamos, New Mexico. (LANL 2010, 110772.33)
- LANL (Los Alamos National Laboratory), October 2010. "Supplemental Interim Measures Report for Solid Waste Management Unit 01-001(f)," Los Alamos National Laboratory document LA-UR-10-6329, Los Alamos, New Mexico. (LANL 2010, 110763)
- NMED (New Mexico Environment Department), June 3, 1997. "Approval of Los Alamos and Pueblo Canyon RFI Workplan (Operable Unit 1049)," New Mexico Environment Department letter to T. Taylor (DOE-LAAO) and J. Jansen (ER Project) from R.S. Dinwiddie (NMED-HRMB), Santa Fe, New Mexico. (NMED 1997, 056362)
- NMED (New Mexico Environment Department), January 12, 2009. "Approval, Delta Prime Site Aggregate Area Phase II Work Plan, Revision 1," New Mexico Environment Department letter to D. Gregory (DOE-LASO) and D. McInroy (LANL) from J.P. Bearzi (NMED-HWB), Santa Fe, New Mexico. (NMED 2009, 104978)

Appendix D, References (continued)

Volume 1 (continued)

- NMED (New Mexico Environment Department), October 19, 2010. "Direction to Modify Phase II Investigation Report for Delta Prime Site Aggregate Area, Technical Area 21, Revision 1," New Mexico Environment Department letter to G.J. Rael (DOE-LASO) and M.J. Graham (LANL) from J.P. Bearzi (NMED-HWB), Santa Fe, New Mexico. (NMED 2010, 110959)
- NMED (New Mexico Environment Department), January 14, 2011. "Certificate of Completion, Pueblo Canyon Aggregate Area, Area of Concern (AOC) 00-018(b)," New Mexico Environment Department letter to G.J. Rael (DOE-LASO) and M.J. Graham (LANL) from J.P. Bearzi (NMED-HWB), Santa Fe, New Mexico. (NMED 2011, 111673)
- NMED (New Mexico Environment Department), May 16, 2012. "Certificates of Completion, One Solid Waste Management Unit and One Area of Concern in the Guaje/Barrancas/Rendija Canyons Aggregate Area," New Mexico Environment Department letter to P. Maggiore (DOE-LASO) and M.J. Graham (LANL) from J.E. Kieling (NMED-HWB), Santa Fe, New Mexico. (NMED 2012, 520388)

Appendix D, References (continued)

Volume 2

- Buckland, C., April 20, 1948. "Sandia Canyon—Clearing for Future Public Road, Picnic Area," Los Alamos Scientific Laboratory memorandum to R.J. Westcott from C. Buckland, Los Alamos, New Mexico. (Buckland 1948, 006001)
- LANL (Los Alamos National Laboratory), May 1992. "RFI Work Plan for Operable Unit 1129," Los Alamos National Laboratory document LA-UR-92-800, Los Alamos, New Mexico. (LANL 1992, 007666)
- LANL (Los Alamos National Laboratory), May 1992. "RFI Work Plan for Operable Unit 1147," Los Alamos National Laboratory document LA-UR-92-969, Los Alamos, New Mexico. (LANL 1992, 007672)
- LANL (Los Alamos National Laboratory), July 1993. "RFI Work Plan for Operable Unit 1114," Los Alamos National Laboratory document LA-UR-93-1000, Los Alamos, New Mexico. (LANL 1993, 020947)
- LANL (Los Alamos National Laboratory), August 1993. "RFI Work Plan for Operable Unit 1140," Los Alamos National Laboratory document LA-UR-93-1940, Los Alamos, New Mexico. (LANL 1993, 020952)
- LANL (Los Alamos National Laboratory), May 1994. "RFI Work Plan for Operable Unit 1100," Los Alamos National Laboratory document LA-UR-94-1097, Los Alamos, New Mexico. (LANL 1994, 034756)
- LANL (Los Alamos National Laboratory), June 13, 1994. "Addendum to the Resource Conservation and Recovery Act (RCRA) Facility Investigation (RFI) Work Plan for Operable Unit (OU) 1129," Los Alamos National Laboratory letter (EM/ER:94-J242) to T.J. Taylor (DOE ER Program Manager) from J. Jansen (ER Program Manager), Los Alamos, New Mexico. (LANL 1994, 039932)
- LANL (Los Alamos National Laboratory), July 1995. "RFI Work Plan for Operable Unit 1114, Addendum 1," Los Alamos National Laboratory document LA-UR-95-731, Los Alamos, New Mexico. (LANL 1995, 057590)
- LANL (Los Alamos National Laboratory), August 1995. "RFI Report for Potential Release Sites 42-001(a), 42-001(b), 42-001(c), 42-002(a), 42-002(b), 42-003," Los Alamos National Laboratory document LA-UR-95-2881, Los Alamos, New Mexico. (LANL 1995, 050056)
- LANL (Los Alamos National Laboratory), September 1995. "RFI Report for Potential Release Sites 50-006(c), 50-007, 50-008, 50-006(a) (located in former Operable Unit 1147)," Los Alamos National Laboratory document LA-UR-95-2738, Los Alamos, New Mexico. (LANL 1995, 049925)
- LANL (Los Alamos National Laboratory), September 1995. "RFI Report for Potential Release Sites 48-001, 48-002(e), 48-003, 48-005, 48-007(a), 48-007(b), 48-007(c), 48-007(d), 48-007(f), 48-010," Los Alamos National Laboratory document LA-UR-95-3328, Los Alamos, New Mexico. (LANL 1995, 050289)
- LANL (Los Alamos National Laboratory), January 1996. "Voluntary Corrective Action Completion Report for Potential Release Sites 20-003(c) and 53-010, Revision 1," Los Alamos National Laboratory document LA-UR-96-1089, Los Alamos, New Mexico. (LANL 1996, 053775)
- LANL (Los Alamos National Laboratory), February 1996. "RFI Report for 53 Potential Release Sites in TA-3, TA-59, TA-60, TA-61," Los Alamos National Laboratory document LA-UR-96-726, Los Alamos, New Mexico. (LANL 1996, 052930)

Appendix D, References (continued)

Volume 2 (continued)

- LANL (Los Alamos National Laboratory), March 1996. "RFI Report for Potential Release Sites at TAs-20, -53, and -72 (located in former Operable Unit 1100)," Los Alamos National Laboratory document LA-UR-96-906, Los Alamos, New Mexico. (LANL 1996, 054466)
- LANL (Los Alamos National Laboratory), June 1996. "RFI Report for Potential Release Sites 35-003(d, e, f, g, l, m, o, q, and r), 35-016(g and h)," Los Alamos National Laboratory document LA-UR-96-1605, Los Alamos National Laboratory. (LANL 1996, 054422)
- LANL (Los Alamos National Laboratory), June 1996. "RFI Report for Potential Release Sites in TA-46, 46-003(h), 46-004(b), 46-004(g), 46-004(h), 46-004(m), 46-004(q), 46-004(s), 46-004(u), 46-004(v), 46-004(x), 46-004(y), 46-004(z), 46-004(a2), 46-004(b2), 46-004(c2), 46-004(d2), 46-004(e2), 46-004(f2), 46-006(a), 46-006(b), 46-006(c), 46-006(d), 46-006(f), 46-006(g), 46-007, 46-008(b), 46-010(d), C-46-002, C-46-003," Los Alamos National Laboratory document LA-UR-96-1957, Los Alamos, New Mexico. (LANL 1996, 054929)
- LANL (Los Alamos National Laboratory), January 1997. "Sampling and Analysis Plan for TA-48," Los Alamos National Laboratory document LA-UR-97-4839, Los Alamos, New Mexico. (LANL 1997, 055326)
- LANL (Los Alamos National Laboratory), May 22, 1997. "Interim Action Report for TA-50, PRS 50-006(a) Activities," Los Alamos National Laboratory letter (EM/ER:97-178) to T.J. Taylor (DOE ER Program Manager) from J. Jansen (ER Program Manager), Los Alamos, New Mexico. (LANL 1997, 055834)
- LANL (Los Alamos National Laboratory), August 1997. "Voluntary Corrective Action Completion Plan for Potential Release Site 53-008, Boneyard," draft, Los Alamos National Laboratory document LA-UR-09-2465, Los Alamos, New Mexico. (LANL 1997, 056384)
- LANL (Los Alamos National Laboratory), September 1997. "Addendum to the RFI Report for Potential Release Sites at Technical Area 48 (Located in Former Operable Unit 1129)," Los Alamos National Laboratory document LA-UR-97-3112, Los Alamos, New Mexico. (LANL 1997, 056565)
- LANL (Los Alamos National Laboratory), September 1997. "RFI Report for AOC C-3-006 and PRS 3-054(e), Manhole and Outfall," Los Alamos National Laboratory document LA-UR-97-3392, Los Alamos, New Mexico. (LANL 1997, 072611)
- LANL (Los Alamos National Laboratory), September 1997. "RFI Report for TA-3 for Potential Release Sites 3-004(c,d), 3-007, 3-014(k,l,o), 3-021, 3-049(a), 3-052(b), 3-056(k), C-3-014," Los Alamos National Laboratory document LA-UR-97-3571, Los Alamos, New Mexico. (LANL 1997, 056660.4)
- LANL (Los Alamos National Laboratory), September 1997. "Voluntary Corrective Action Completion Report for Potential Release Site 53-014, Lead Shot Site," Los Alamos National Laboratory document LA-UR-97-3846, Los Alamos, New Mexico. (LANL 1997, 062913)
- LANL (Los Alamos National Laboratory), September 1997. "Voluntary Corrective Action Completion Report for Potential Release Site 53-001(a), Storage Area," draft, Los Alamos National Laboratory document LA-UR-09-2464, Los Alamos, New Mexico. (LANL 1997, 056505)

Appendix D, References (continued)

Volume 2 (continued)

- LANL (Los Alamos National Laboratory), June 1998. "RFI Work Plan and SAP for Potential Release Sites 53-002(a), 53-002(b), and Associated Piping and Drainages at TA-53," Los Alamos National Laboratory document LA-UR-98-2547, Los Alamos, New Mexico. (LANL 1998, 058841)
- LANL (Los Alamos National Laboratory), September 1999. "Work Plan for Sandia Canyon and Cañada del Buey," Los Alamos National Laboratory document LA-UR-99-3610, Los Alamos, New Mexico. (LANL 1999, 064617)
- LANL (Los Alamos National Laboratory), July 23, 2001–March 13, 2002. "Field Notebook for SWMUs 03-001(k), 03-003(c), 03-011, 03-049(e), 03-056(a), 27-003, 39-007(a), 60-002, 60-007(a), and C-09-001," Los Alamos National Laboratory, Los Alamos, New Mexico. (LANL 2001–2002, 100703)
- LANL (Los Alamos National Laboratory), November 2004. "Accelerated Corrective Action Work Plan for the Investigation and Remediation of Area of Concern 03-001(i) and Solid Waste Management Units 03-029 and 61-002," Los Alamos National Laboratory document LA-UR-04-7879, Los Alamos, New Mexico. (LANL 2004, 087474)
- LANL (Los Alamos National Laboratory), September 2005. "Investigation Report for the Middle Mortandad/Ten Site Aggregate," Los Alamos National Laboratory document LA-UR-05-6135, Los Alamos, New Mexico. (LANL 2005, 091699)
- LANL (Los Alamos National Laboratory), September 2005. "Investigation and Remediation Report for Consolidated SWMU 53-002(a)-99, Inactive Wastewater Impoundments, and AOC 53-008, Storage Area, at Technical Area 53, Revision 1," Los Alamos National Laboratory document LA-UR-05-6373, Los Alamos, New Mexico. (LANL 2005, 091498)
- LANL (Los Alamos National Laboratory), December 2005. "Remedy Completion Report for the Investigation and Remediation of Area of Concern 03-001(i) and Solid Waste Management Units 03-029 and 61-002," Los Alamos National Laboratory document LA-UR-05-8863, Los Alamos, New Mexico. (LANL 2005, 091150)
- LANL (Los Alamos National Laboratory), October 2006. "Mortandad Canyon Investigation Report," Los Alamos National Laboratory document LA-UR-06-6752, Los Alamos, New Mexico. (LANL 2006, 094161)
- LANL (Los Alamos National Laboratory), July 2007. "Investigation Report for the Middle Mortandad/Ten Site Aggregate, Revision 1," Los Alamos National Laboratory document LA-UR-07-4716, Los Alamos, New Mexico. (LANL 2007, 100119)
- LANL (Los Alamos National Laboratory), October 2007. "Historical Investigation Report for Middle Cañada del Buey Aggregate Area," Los Alamos National Laboratory document LA-UR-07-7039, Los Alamos, New Mexico. (LANL 2007, 098710)
- LANL (Los Alamos National Laboratory), November 2007. "Investigation Work Plan for Upper Mortandad Canyon Aggregate Area," Los Alamos National Laboratory document LA-UR-07-7696, Los Alamos, New Mexico. (LANL 2007, 098954)

Appendix D, References (continued)

Volume 2 (continued)

- LANL (Los Alamos National Laboratory), November 2007. "Historical Investigation Report for Upper Mortandad Canyon Aggregate Area," Los Alamos National Laboratory document LA-UR-07-7802, Los Alamos, New Mexico. (LANL 2007, 098955)
- LANL (Los Alamos National Laboratory), February 2008. "Investigation Work Plan for Upper Mortandad Canyon Aggregate Area, Revision 1," Los Alamos National Laboratory document LA-UR-08-1272, Los Alamos, New Mexico. (LANL 2008, 100750)
- LANL (Los Alamos National Laboratory), February 2008. "Investigation Report for the Middle Mortandad/Ten Site Aggregate, Revision 2," Los Alamos National Laboratory document LA-UR-08-0336, Los Alamos, New Mexico. (LANL 2008, 102187)
- LANL (Los Alamos National Laboratory), March 2008. "Historical Investigation Report for Upper Sandia Canyon Aggregate Area," Los Alamos National Laboratory document LA-UR-08-1851, Los Alamos, New Mexico. (LANL 2008, 100693)
- LANL (Los Alamos National Laboratory), July 2008. "Investigation Work Plan for Upper Sandia Canyon Aggregate Area, Revision 1," Los Alamos National Laboratory document LA-UR-08-4798, Los Alamos, New Mexico. (LANL 2008, 103404.43)
- LANL (Los Alamos National Laboratory), September 2008. "Investigation Work Plan for Upper Cañada del Buey Aggregate Area, Revision 1," Los Alamos National Laboratory document LA-UR-08-6122, Los Alamos, New Mexico. (LANL 2008, 105038.17)
- LANL (Los Alamos National Laboratory), April 2009. "Historical Investigation Report for Lower Sandia Canyon Aggregate Area," Los Alamos National Laboratory document LA-UR-09-2077, Los Alamos, New Mexico. (LANL 2009, 105078)
- LANL (Los Alamos National Laboratory), April 2009. "Investigation Report for Middle Cañada del Buey Aggregate Area, Revision 1," Los Alamos National Laboratory document LA-UR-09-1985, Los Alamos, New Mexico. (LANL 2009, 105754)
- LANL (Los Alamos National Laboratory), July 2009. "Investigation Work Plan for Lower Sandia Canyon Aggregate Area, Revision 1," Los Alamos National Laboratory document LA-UR-09-4329, Los Alamos, New Mexico. (LANL 2009, 106660.14)
- LANL (Los Alamos National Laboratory), October 2009. "Investigation Report for Sandia Canyon," Los Alamos National Laboratory document LA-UR-09-6450, Los Alamos, New Mexico. (LANL 2009, 107453)
- LANL (Los Alamos National Laboratory), November 2009. "Cañada del Buey Investigation Report, Revision 1," Los Alamos National Laboratory document LA-UR-09-7317, Los Alamos, New Mexico. (LANL 2009, 107497)
- LANL (Los Alamos National Laboratory), April 2010. "Investigation Report for Upper Mortandad Canyon Aggregate Area, Revision 1," Los Alamos National Laboratory document LA-UR-10-2046, Los Alamos, New Mexico. (LANL 2010, 109180.28)

Appendix D, References (continued)

Volume 2 (continued)

- LANL (Los Alamos National Laboratory), October 2010. "Investigation Report for Upper Sandia Canyon Aggregate Area, Revision 1," Los Alamos National Laboratory document LA-UR-10-6410, Los Alamos, New Mexico. (LANL 2010, 110862.24)
- LANL (Los Alamos National Laboratory), December 2010. "Phase II Investigation Work Plan for Upper Mortandad Canyon Aggregate Area," Los Alamos National Laboratory document LA-UR-10-7423, Los Alamos, New Mexico. (LANL 2010, 111472)
- LANL (Los Alamos National Laboratory), May 2011. "Investigation Report for Upper Cañada del Buey Aggregate Area, Revision 1," Los Alamos National Laboratory document LA-UR-11-2487, Los Alamos, New Mexico. (LANL 2011, 203410)
- LANL (Los Alamos National Laboratory), September 2011. "Phase II Investigation Work Plan for Upper Sandia Canyon Aggregate Area, Revision 1," Los Alamos National Laboratory document LA-UR-11-4912, Los Alamos, New Mexico. (LANL 2011, 206234)
- NMED (New Mexico Environment Department), September 7, 2010. "Certificates of Completion, Upper Mortandad Canyon Aggregate Area," New Mexico Environment Department letter to G.J. Rael (DOE-LASO) and M.J. Graham (LANL) from J.P. Bearzi (NMED-HWB), Santa Fe, New Mexico. (NMED 2010, 110665)
- NMED (New Mexico Environment Department), February 18, 2011. "Certificates of Completion, Upper Sandia Canyon Aggregate Area," New Mexico Environment Department letter to G.J. Rael (DOE-LASO) and M.J. Graham (LANL) from J.E. Kieling (NMED-HWB), Santa Fe, New Mexico. (NMED 2011, 111821)
- NMED (New Mexico Environment Department), May 4, 2011. "Certificates of Completion Request, Middle Mortandad/Ten Site Aggregate Area SWMUs and AOCs," New Mexico Environment Department letter to G.J. Rael (DOE-LASO) and M.J. Graham (LANL) from J.E. Kieling (NMED-HWB), Santa Fe, New Mexico. (NMED 2011, 203066)
- NMED (New Mexico Environment Department), July 13, 2012. "Approval of Request for Certificates of Completion for Six Solid Waste Management Units and One Area of Concern in the Upper Cañada del Buey Aggregate Area," New Mexico Environment Department letter to P. Maggiore (DOE-LASO) and M.J. Graham (LANL) from J.E. Kieling (NMED-HWB), Santa Fe, New Mexico. (NMED 2012, 520940)
- WGII (Washington Group International, Inc.), October 3, 2000. "Mortandad Canyon Sediment Trap Maintenance, Final Closeout Report," Los Alamos, New Mexico. (WGII 2000, 070735)

Appendix D, References (continued)

Volume 3

- IT Corporation (International Technology Corporation), March 1995. "Closure Certification Report for the Technical Area 40 Scrap Detonation Site (Condensed)," report prepared for Los Alamos National Laboratory, Los Alamos, New Mexico. (IT Corporation 1995, 057521)
- LANL (Los Alamos National Laboratory), July 1991. "Final Closure Plan, TA-40 Scrap Detonation Site, Revision 1," Los Alamos National Laboratory document LA-UR-91-2399, Los Alamos, New Mexico. (LANL 1991, 007653)
- LANL (Los Alamos National Laboratory), June 1993. "RFI Work Plan for Operable Unit 1130," Los Alamos National Laboratory document LA-UR-93-1152, Los Alamos, New Mexico. (LANL 1993, 015313)
- LANL (Los Alamos National Laboratory), July 1993. "RFI Work Plan for Operable Unit 1114," Los Alamos National Laboratory document LA-UR-93-1000, Los Alamos, New Mexico. (LANL 1993, 020947)
- LANL (Los Alamos National Laboratory), July 1993. "RFI Work Plan for Operable Unit 1157," Los Alamos National Laboratory document LA-UR-93-1230, Los Alamos, New Mexico. (LANL 1993, 020949)
- LANL (Los Alamos National Laboratory), July 1993. "RFI Work Plan for Operable Unit 1086," Los Alamos National Laboratory document LA-UR-92-3968, Los Alamos, New Mexico. (LANL 1993, 020946)
- LANL (Los Alamos National Laboratory), August 1993. "RFI Work Plan for Operable Unit 1111," Los Alamos National Laboratory document LA-UR-93-2166, Los Alamos, New Mexico. (LANL 1993, 026068)
- LANL (Los Alamos National Laboratory), May 1994. "RFI Work Plan for Operable Unit 1085," Los Alamos National Laboratory document LA-UR-94-1033, Los Alamos, New Mexico. (LANL 1994, 034755)
- LANL (Los Alamos National Laboratory), September 1994. "Phase II RFI Work Plan for SWMU 3-010(a), Mercury Cleanup, OU 1114, Environmental Restoration Project," report prepared for Los Alamos National Laboratory by the ERM Program Management Company and Golder Federal Services, Inc., Los Alamos, New Mexico. (LANL 1994, 042624)
- LANL (Los Alamos National Laboratory), October 30, 1995. "RFI Report for Field Unit 2 (OU 1086), Potential Release Sites 15-004(b,c), 15-004(a,d), 15-004(f), 15-007(b), 15-008(a,b), 15-012(b), 15-009(e,j), C-15-004," Environmental Restoration Project, Los Alamos National Laboratory document LA-UR-95-3738, Los Alamos, New Mexico. (LANL 1995, 050294)
- LANL (Los Alamos National Laboratory), April 28, 1995. "RFI Report for Field Unit 1, SWMU 3-010(a)," Los Alamos National Laboratory document LA-UR-95-1485, Los Alamos, New Mexico. (LANL 1995, 046195)
- LANL (Los Alamos National Laboratory), July 1995. "RFI Work Plan for Operable Unit 1114, Addendum 1," Los Alamos National Laboratory document LA-UR-95-731, Los Alamos, New Mexico. (LANL 1995, 057590)
- LANL (Los Alamos National Laboratory), September 1995. "Expedited Cleanup Completion Report for Potential Release Site 22-015(c), Outfall from a Former Plating and Etching Facility, Revision 1," Los Alamos National Laboratory document LA-UR-96-467, Los Alamos, New Mexico. (LANL 1995, 091212)

Appendix D, References (continued)

Volume 3 (continued)

- LANL (Los Alamos National Laboratory), November 2, 1995. "RFI Report for Potential Release Sites 18-002(a-c), 18-003(a-h), 18-004(a,b), 18-005(a), 18-008, 18-010(b-f), 18-011, 18-012(a-c), 18-013, 27-002, PCO Wells, LACEF Monitoring Wells, Wetlands (located in former Operable Unit 1093)," Los Alamos National Laboratory, Los Alamos, New Mexico. (LANL 1995, 055527)
- LANL (Los Alamos National Laboratory), February 1996. "RFI Report for 53 Potential Release Sites in TA-3, TA-59, TA-60, TA-61," Los Alamos National Laboratory document LA-UR-96-726, Los Alamos, New Mexico. (LANL 1996, 052930)
- LANL (Los Alamos National Laboratory), September 1997. "RFI Report for Potential Release Sites at TAs -6, -8, -22, and -40 (located in former Operable Units 1157 and 1111)," Los Alamos National Laboratory document LA-UR-97-3316, Los Alamos, New Mexico. (LANL 1997, 056664)
- LANL (Los Alamos National Laboratory), September 1997. "RFI Report for Potential Release Sites 22-012, 22-015 (a, b, d, e) (located in former Operable Unit 1111)," Los Alamos National Laboratory document LA-UR-97-3340, Los Alamos, New Mexico. (LANL 1997, 056749)
- LANL (Los Alamos National Laboratory), September 1998. "Work Plan for Pajarito Canyon," Los Alamos National Laboratory document LA-UR-98-2550, Los Alamos, New Mexico. (LANL 1998, 059577)
- LANL (Los Alamos National Laboratory), September 30, 1998. "RFI Report for Potential Release Sites in the Eastern and Western Aggregates at Technical Area 6," Los Alamos National Laboratory document LA-UR-98-3710, Los Alamos, New Mexico. (LANL 1998, 062227)
- LANL (Los Alamos National Laboratory), March 2000. "RFI Report for Material Disposal Areas G, H, and L at Technical Area 54," Los Alamos National Laboratory document LA-UR-00-1140, Los Alamos, New Mexico. (LANL 2000, 064360)
- LANL (Los Alamos National Laboratory), October 2000. "Addendum to RFI Report for Field Unit 1, SWMU 3-010(a)," Los Alamos National Laboratory document, Los Alamos, New Mexico. (LANL 2000, 068736)
- LANL (Los Alamos National Laboratory), September 2003. "Investigation Work Plan for Material Disposal Area G, at Technical Area 54," Los Alamos National Laboratory document LA-UR-03-6491, Los Alamos, New Mexico. (LANL 2003, 081174)
- LANL (Los Alamos National Laboratory), October 2003. "Groundwater Investigation Work Plan for Solid Waste Management Unit 3-010(a) at Technical Area 3," Los Alamos National Laboratory document LA-UR-03-7349, Los Alamos, New Mexico. (LANL 2003, 081599)
- LANL (Los Alamos National Laboratory), December 13, 1999. "Plan for Characterization of Groundwater, Surface Water, and Sediments at SWMU 3-010(a)," Los Alamos National Laboratory, Los Alamos, New Mexico. (LANL 2003, 081607)
- LANL (Los Alamos National Laboratory), October 15, 2007. "Submittal of Certification of Culvert Repair Behind the SM-30 Warehouse, in the Vicinity of Solid Waste Management Units 03-010(a) and 03-001(e)," Los Alamos National Laboratory letter (EP2007-0635) to J.P. Bearzi (NMED-HWB) from S. Stiger (LANL) and D. Gregory (DOE-LASO), Los Alamos, New Mexico. (LANL 2007, 099171)

Appendix D, References (continued)

Volume 3 (continued)

- LANL (Los Alamos National Laboratory), July 2008. "Historical Investigation Report for Threemile Canyon Aggregate Area," Los Alamos National Laboratory document LA-UR-08-4713, Los Alamos, New Mexico. (LANL 2008, 102244)
- LANL (Los Alamos National Laboratory), October 2008. "Investigation Work Plan for Threemile Canyon Aggregate Area, Revision 1," Los Alamos National Laboratory document LA-UR-08-6727, Los Alamos, New Mexico. (LANL 2008, 105673)
- LANL (Los Alamos National Laboratory), August 2009. "Pajarito Canyon Investigation Report, Revision 1," Los Alamos National Laboratory document LA-UR-09-4670, Los Alamos, New Mexico. (LANL 2009, 106939)
- LANL (Los Alamos National Laboratory), January 2010. "Historical Investigation Report for Twomile Canyon Aggregate Area," Los Alamos National Laboratory document LA-UR-10-0386, Los Alamos, New Mexico. (LANL 2010, 108330)
- LANL (Los Alamos National Laboratory), May 2010. "Investigation Work Plan for Twomile Canyon Aggregate Area, Revision 1," Los Alamos National Laboratory document LA-UR-10-2899, Los Alamos, New Mexico. (LANL 2010, 109520)
- LANL (Los Alamos National Laboratory), July 2010. "Investigation Work Plan for Lower Pajarito Canyon Aggregate Area," Los Alamos National Laboratory document LA-UR-10-3302, Los Alamos, New Mexico. (LANL 2010, 109636)
- LANL (Los Alamos National Laboratory), July 2010. "Historical Investigation Report for Lower Pajarito Canyon Aggregate Area," Los Alamos National Laboratory document LA-UR-10-3299, Los Alamos, New Mexico. (LANL 2010, 109639)
- LANL (Los Alamos National Laboratory), September 2010. "Historical Investigation Report for Starmer/Upper Pajarito Canyon Aggregate Area," Los Alamos National Laboratory document LA-UR-10-6031, Los Alamos, New Mexico. (LANL 2010, 110528)
- LANL (Los Alamos National Laboratory), November 2010. "Investigation Report for Threemile Canyon Aggregate Area, Revision 1," Los Alamos National Laboratory document LA-UR-10-7227, Los Alamos, New Mexico. (LANL 2010, 111324.14)
- LANL (Los Alamos National Laboratory), November 2010. "Investigation Work Plan for Lower Pajarito Canyon Aggregate Area, Revision 1," Los Alamos National Laboratory document LA-UR-10-7635, Los Alamos, New Mexico. (LANL 2010, 111328)
- LANL (Los Alamos National Laboratory), March 2011. "Investigation Work Plan for Starmer/Upper Pajarito Canyon Aggregate Area, Revision 1," Los Alamos National Laboratory document LA-UR-11-1821, Los Alamos, New Mexico. (LANL 2011, 111794)
- McGehee, E.D., E. Loomis, K.L.M. Garcia, K. Towery, J. Ronquillo, N. Naranjo, and J. Isaacson, September 2004. "Engineering the Bomb: Detonator and Plutonium Recovery Research at Two-Mile Mesa Site (TA-6)," Historic Context and Property Documentaiton, Historic Building Survey Report No. 236, Los Alamos National Laboratory document LA-UR-04-7130, Los Alamos, New Mexico. (McGehee et al. 2004, 108213)

Appendix D, References (continued)

Volume 4

- LANL (Los Alamos National Laboratory), November 1990. "Solid Waste Management Units Report," Vol. II of IV (TA-10 through TA-25), Los Alamos National Laboratory document LA-UR-90-3400, Los Alamos, New Mexico. (LANL 1990, 007512)
- LANL (Los Alamos National Laboratory), July 1993. "RFI Work Plan for Operable Unit 1082," Los Alamos National Laboratory document LA-UR-93-1196, Los Alamos, New Mexico. (LANL 1993, 020948)
- LANL (Los Alamos National Laboratory), July 1993. "RFI Work Plan for Operable Unit 1086," Los Alamos National Laboratory document LA-UR-92-3968, Los Alamos, New Mexico. (LANL 1993, 020946)
- LANL (Los Alamos National Laboratory), May 1994. "RFI Work Plan for Operable Unit 1085," Los Alamos National Laboratory document LA-UR-94-1033, Los Alamos, New Mexico. (LANL 1994, 034755)
- LANL (Los Alamos National Laboratory), July 1994. "RFI Work Plan for Operable Unit 1082, Addendum I," Los Alamos National Laboratory document LA-UR-94-1580, Los Alamos, New Mexico. (LANL 1994, 039440)
- LANL (Los Alamos National Laboratory), October 30, 1995. "RFI Report for Field Unit 2 (OU 1086), Potential Release Sites 15-004(b,c), 15-004(a,d), 15-004(f), 15-007(b), 15-008(a,b), 15-012(b), 15-009(e,j), C-15-004," Environmental Restoration Project, Los Alamos National Laboratory document LA-UR-95-3738, Los Alamos, New Mexico. (LANL 1995, 050294)
- LANL (Los Alamos National Laboratory), July 1995. "RFI Work Plan for Operable Unit 1082, Addendum 2," Los Alamos National Laboratory document LA-UR-95-1038, Los Alamos, New Mexico. (LANL 1995, 057225)
- LANL (Los Alamos National Laboratory), September 1995. "RFI Report for Potential Release Sites 36-003(a), 36-003(b), 36-005, C-36-003 (located in former Operable Unit 1130)," Los Alamos National Laboratory document LA-UR-95-3375, Los Alamos, New Mexico. (LANL 1995, 053985)
- LANL (Los Alamos National Laboratory), January 1996. "Voluntary Corrective Action Completion Report for Potential Release Site C-36-001, Test Containment Vessel, Revision 1," Los Alamos National Laboratory document LA-UR-96-276, Los Alamos, New Mexico. (LANL 1996, 053779)
- LANL (Los Alamos National Laboratory), February 1996. "RFI Report for Potential Release Sites at TA-14 and TA-12/67 (located in former Operable Unit 1085)," Los Alamos National Laboratory document LA-UR-96-511, Los Alamos, New Mexico. (LANL 1996, 054086)
- LANL (Los Alamos National Laboratory), May 1996. "Interim Action Plan for Potential Release Site 36-001," Los Alamos National Laboratory, Los Alamos, New Mexico. (LANL 1996, 054449)
- LANL (Los Alamos National Laboratory), May 1996. "RFI Report for Potential Release Sites at TA-15, 15-001, 15-002, 15-004(g,h), 15-005(b,c), 15-006(c,d), 15-007(a), 15-008(c,g), 15-009(a,f,i,k), 15-010(a-c), 15-011(a-c), 15-012(a), 15-014(a,b,d,e,g-l), C-15-001, C-15-005, C-15-007, C-15-010, and C-15-011 (located in former Operable Unit 1086)," Los Alamos National Laboratory document LA-UR-95-1685, Los Alamos, New Mexico. (LANL 1996, 054977)

Appendix D, References (continued)

Volume 4 (continued)

- LANL (Los Alamos National Laboratory), June 1996. "RFI Report for Potential Release Sites at TA-36, 36-001, 36-004(d), (Skunk Works and Burn [P]its), 36-006 (located in former Operable Unit 1130)," Los Alamos National Laboratory document LA-UR-96-2139, Los Alamos, New Mexico. (LANL 1996, 054733)
- LANL (Los Alamos National Laboratory), September 1996. "Voluntary Corrective Action Completion Report for Potential Release Sites at TA-16, 90s-Line: 16-026(m-p), 16-029(k,l,q,s,t,u), C-16-064, C-16-067," Los Alamos National Laboratory document LA-UR-96-3285, Los Alamos, New Mexico. (LANL 1996, 062537)
- LANL (Los Alamos National Laboratory), September 1996. "Voluntary Corrective Action Completion Report for Potential Release Site 36-003(b), Septic System," Los Alamos National Laboratory document LA-UR-96-3346, Los Alamos, New Mexico. (LANL 1996, 055072)
- LANL (Los Alamos National Laboratory), September 1996. "Voluntary Corrective Action Report for Potential Release Site 15-004(b), Firing Site A," Los Alamos National Laboratory document LA-UR-96-3339, Los Alamos, New Mexico. (LANL 1996, 055046)
- LANL (Los Alamos National Laboratory), March 20, 1997. "Voluntary Corrective Measures Plan for Potential Release Sites at TA-16: 16-005(d), 16-006(g,h), 16-013, 16-017, 16-025(x), 16-026(q), 16-029(g2,h2,w,x), 16-031(c,d), 16-034(p), C-16-065, C-16-068, C-16-074," Los Alamos National Laboratory document LA-UR-97-640, Los Alamos, New Mexico. (LANL 1997, 055653)
- LANL (Los Alamos National Laboratory), July 1997. "Interim Action Plan for Potential Release Sites 36-004(e) - I-J Firing Site, 15-008(f) - The Mounds, C-36-006(e) - Projectile Test Area," Los Alamos National Laboratory document LA-UR-97-2739, Los Alamos, New Mexico. (LANL 1997, 062453)
- LANL (Los Alamos National Laboratory), September 1997. "RFI Report for Potential Release Sites at TA-16: 11-012(a,b), 13-003(a), 16-006(c,d), 16-010(a), 16-021(a), 16-026(c,d,v), 16-028(a), 16-030(g)," Los Alamos National Laboratory document LA-UR-97-3072, Los Alamos, New Mexico. (LANL 1997, 062539)
- LANL (Los Alamos National Laboratory), September 1997. "Voluntary Corrective Action Report for Potential Release Site 15-009(e), Septic Tank," Los Alamos National Laboratory document LA-UR-97-3919, Los Alamos, New Mexico. (LANL 1997, 074091)
- LANL (Los Alamos National Laboratory), September 1998. "RFI Report for Potential Release Site 16-021(c)," Los Alamos National Laboratory document LA-UR-98-4101, Los Alamos, New Mexico. (LANL 1998, 059891)
- LANL (Los Alamos National Laboratory), August 2005. "Material Disposal Area P Site Closure Certification Report, Revision 1," Volume 2 of 2, Los Alamos National Laboratory document LA-UR-05-6536, Los Alamos, New Mexico. (LANL 2005, 091141)
- LANL (Los Alamos National Laboratory), August 2005. "Material Disposal Area P Site Closure Certification Report, Revision 1," Los Alamos National Laboratory document LA-UR-05-6536, Los Alamos, New Mexico. (LANL 2005, 092251)

Appendix D, References (continued)

Volume 4 (continued)

- LANL (Los Alamos National Laboratory), September 2006. "Historical Investigation Report for Cañon de Valle Aggregate Area," Los Alamos National Laboratory document LA-UR-06-4961, Los Alamos, New Mexico. (LANL 2006, 091697)
- LANL (Los Alamos National Laboratory), December 2007. "Investigation Work Plan for S-Site Aggregate Area, Revision 1," Los Alamos National Laboratory document LA-UR-07-8366, Los Alamos, New Mexico. (LANL 2007, 102216)
- LANL (Los Alamos National Laboratory), April 2009. "Historical Investigation Report for Potrillo and Fence Canyons Aggregate Area," Los Alamos National Laboratory document LA-UR-09-2341, Los Alamos, New Mexico. (LANL 2009, 105251)
- LANL (Los Alamos National Laboratory), July 2009. "Investigation Work Plan for Potrillo and Fence Canyons Aggregate Area, Revision 1," Los Alamos National Laboratory document LA-UR-09-4327, Los Alamos, New Mexico. (LANL 2009, 106657.8)
- LANL (Los Alamos National Laboratory), August 2010. "Historical Investigation Report for Upper Water Canyon Aggregate Area," Los Alamos National Laboratory document LA-UR-10-5226, Los Alamos, New Mexico. (LANL 2010, 110410)
- LANL (Los Alamos National Laboratory), February 2011. "Investigation Report for S-Site Aggregate Area, Revision 1," Los Alamos National Laboratory document LA-UR-11-0561, Los Alamos, New Mexico. (LANL 2011, 111810.32)
- LANL (Los Alamos National Laboratory), April 7, 2011. "Site Discharge Pollution Prevention Plan, Los Alamos National Laboratory, NPDES Permit No. NM0030759, April 7, 2011, Volume 4, Water Canyon and Cañon de Valle Watershed," Environmental Programs document no. EP-DIR-PLAN-10006, R.0, Los Alamos National Laboratory document LA-UR-11-1554, Los Alamos, New Mexico. (LANL 2011, 204887)
- LANL (Los Alamos National Laboratory), September 2011. "Phase II Investigation Work Plan for S-Site Aggregate Area," Los Alamos National Laboratory document LA-UR-11-5388, Los Alamos, New Mexico. (LANL 2011, 206485)
- LANL (Los Alamos National Laboratory), September 2011. "Investigation Report for Water Canyon/Cañon de Valle," Los Alamos National Laboratory document LA-UR-11-5478, Los Alamos, New Mexico. (LANL 2011, 207069)
- LANL (Los Alamos National Laboratory), November 2011. "Investigation Report for Potrillo and Fence Canyons Aggregate Area, Revision 1," Los Alamos National Laboratory document LA-UR-11-6217, Los Alamos, New Mexico. (LANL 2011, 208336)
- NMED (New Mexico Environment Department), January 23, 2008. "Approval of Los Alamos National Laboratory Proposal for No Further Action," New Mexico Environment Department letter to D. Gregory (DOE-LASO) and D. McInroy (LANL) from J.P. Bearzi (NMED-HWB), Santa Fe, New Mexico. (NMED 2008, 100116)
- Nonno, L., February 22, 2012. "Documentation of 'No Further Action' under the Consent Order for 20 RCRA Hazardous Waste Management Units," Los Alamos National Laboratory memorandum to file from L. Nonno (LANL), Los Alamos, New Mexico. (Nonno 2012, 210148)

Appendix D, References (continued)

Volume 5

- LANL (Los Alamos National Laboratory), May 1992. "RFI Work Plan for Operable Unit 1122," Los Alamos National Laboratory document LA-UR-92-925, Los Alamos, New Mexico. (LANL 1992, 007671)
- LANL (Los Alamos National Laboratory), June 1993. "RFI Work Plan for Operable Unit 1132," Los Alamos National Laboratory document LA-UR-93-768, Los Alamos, New Mexico. (LANL 1993, 015316)
- LANL (Los Alamos National Laboratory), December 1995. "RFI Report for Potential Release Sites 33-004(b), 33-004(c), 33-004(j), 33-004(m), 33-006(a), 33-006(b), 33-007(a), 33-007(b), 33-010(a), 33-010(b), 33-010(c), 33-010(d), 33-010(g), 33-010(h), 33-011(b), 33-011(c), 33-014," Los Alamos National Laboratory document LA-UR-95-4439, Los Alamos, New Mexico. (LANL 1995, 051903)
- LANL (Los Alamos National Laboratory), January 31, 1995. "Field Unit 3, Operable Unit 1122, Technical Area 33, RFI Report for PRSs 33-004(d), 33-004(g), 33-004(h), 33-004(i), 33-005(a), 33-005(b), 33-005(c), 33-010(e), 33-010(f), 33-011(e), 33-012(a), 33-015, 33-007(c), 33-011(a)," Los Alamos National Laboratory document LA-UR-95-0882, Los Alamos, New Mexico. (LANL 1995, 071262)
- LANL (Los Alamos National Laboratory), April 1995. "RFI Report for Potential Release Sites 39-002(a-f), 39-005, 39-006(a), 39-007(a) (d) (located in former Operable Unit 1132)," Los Alamos National Laboratory document LA-UR-95-1069, Los Alamos, New Mexico. (LANL 1995, 046190)
- LANL (Los Alamos National Laboratory), September 29, 1995. "RFI Report for Field Unit 3, Operable Unit 1122, Technical Area 33, RFI Report for PRSs 33-003(a), 33-004(a), 33-007(c), 33-009, 33-011(d), 33-013, 33-016, 33-017, Revised Sampling Plans for PRSs 33-003(b), 33-004(k), 33-008(a), 33-008(b), C-33-001, C-33-002," Los Alamos National Laboratory document LA-UR-95-3626, Los Alamos, New Mexico. (LANL 1995, 071300)
- LANL (Los Alamos National Laboratory), January 1996. "Voluntary Corrective Action Completion Report for Potential Release Site 39-002(c), Waste Container Storage Area, Revision 1," Los Alamos National Laboratory document LA-UR-96-445, Los Alamos, New Mexico. (LANL 1996, 054401)
- LANL (Los Alamos National Laboratory), February 1996. "Interim Action Report for Potential Release Site 33-007(c)," Los Alamos National Laboratory document LA-UR-96-710, Los Alamos, New Mexico. (LANL 1996, 052919)
- LANL (Los Alamos National Laboratory), May 1996. "Interim Action Report for Potential Release Site 33-007(b)," Los Alamos National Laboratory, Los Alamos, New Mexico. (LANL 1996, 054623)
- LANL (Los Alamos National Laboratory), June 1996. "Voluntary Corrective Action Completion Report for Solid Waste Management Units at TA-33, 33-010(a), Canyon-Side Disposal Area, 33-010(d), Surface Disposal Area, 33-010(g), Canyon-Side Disposal Area, 33-011(b), General Storage Area," Los Alamos National Laboratory document LA-UR-96-1839, Los Alamos, New Mexico. (LANL 1996, 054755)
- LANL (Los Alamos National Laboratory), September 1996. "Voluntary Corrective Action Report for a Solid Waste Management Unit at TA-33, 33-007(c)," Los Alamos National Laboratory document LA-UR-96-3198, Los Alamos, New Mexico. (LANL 1996, 062541)

Appendix D, References (continued)

Volume 5 (continued)

- LANL (Los Alamos National Laboratory), March 1997. "Interim Action Report for Potential Release Site 33-006(a), Operable Unit 1122, Technical Area 33," Los Alamos National Laboratory document LA-UR-97-641, Los Alamos, New Mexico. (LANL 1997, 055865)
- LANL (Los Alamos National Laboratory), March 1997. "RFI Report for Potential Release Sites at TA-39, 39-001(a&b), 39-004(a-e), and 39-008 (located in former Operable Unit 1132)," Los Alamos National Laboratory document LA-UR-97-1408, Los Alamos, New Mexico. (LANL 1997, 055633)
- LANL (Los Alamos National Laboratory), March 23, 1999. "VCA Plan for Potential Release Sites 33-007(b), 33-010(c), C-33-003," Los Alamos National Laboratory document LA-UR-99-3002, Los Alamos, New Mexico. (LANL 1999, 063678)
- LANL (Los Alamos National Laboratory), August 18, 2000. "Submittal of Response to Request for Supplemental Information (RSI) for the Voluntary Corrective Action (VCA) Plan for Potential Release Sites (PRs) 33-007(b), 33-010(c), and C-33-003 [and attached 'Segmented Gate System, Voluntary Corrective Action Status Report for Potential Release Sites 33-007(b), 33-010(c), C-33-033]," Los Alamos National Laboratory letter (ER2000-0171) to J. Kieling (NMED-HWB) from J.A. Canepa (LANL) and T.J. Taylor (DOE-LAAO), Los Alamos, New Mexico. (LANL 2000, 066889)
- LANL (Los Alamos National Laboratory), September 2007. "Investigation Work Plan for North Ancho Canyon Aggregate Area," Los Alamos National Laboratory document LA-UR-07-5947, Los Alamos, New Mexico. (LANL 2007, 098280)
- LANL (Los Alamos National Laboratory), September 2007. "Historical Investigation Report for North Ancho Canyon Aggregate Area," Los Alamos National Laboratory document LA-UR-07-5948, Los Alamos, New Mexico. (LANL 2007, 098281)
- LANL (Los Alamos National Laboratory), December 2007. "Investigation Work Plan for North Ancho Canyon Aggregate Area, Revision 1," Los Alamos National Laboratory document LA-UR-07-8272, Los Alamos, New Mexico. (LANL 2007, 101894)
- LANL (Los Alamos National Laboratory), January 2008. "Investigation Work Plan for Sites at Technical Area 49 Outside the Nuclear Environmental Site Boundary, Revision 1," Los Alamos National Laboratory document LA-UR-08-0449, Los Alamos, New Mexico. (LANL 2008, 102215)
- LANL (Los Alamos National Laboratory), January 2008. "Investigation Work Plan for Sites at Technical Area 49 Inside the Nuclear Environmental Site Boundary, Revision 1," Los Alamos National Laboratory document LA-UR-08-0447, Los Alamos, New Mexico. (LANL 2008, 102691)
- LANL (Los Alamos National Laboratory), April 1, 2009. "Request for Approval of Expanded Boundaries for Areas of Contamination for the Investigation and Remediation of Solid Waste Management Units 39-001(a) and 39-001(b) at Technical Area 39," Los Alamos National Laboratory letter (EP2009-0180) to J.P. Bearzi (NMED-HWB) from M.J. Graham (LANL) and D.R. Gregory (DOE-LASO), Los Alamos, New Mexico. (LANL 2009, 105720)
- LANL (Los Alamos National Laboratory), January 2010. "Investigation Report for North Ancho Canyon Aggregate Area, Revision 1," Los Alamos National Laboratory document LA-UR-10-0125, Los Alamos, New Mexico. (LANL 2010, 108500.11)

Appendix D, References (continued)

Volume 5 (continued)

- LANL (Los Alamos National Laboratory), November 2010. "Investigation Work Plan for Chaquehui Canyon Aggregate Area, Revision 1," Los Alamos National Laboratory document LA-UR-10-7226, Los Alamos, New Mexico. (LANL 2010, 111298.9)
- LANL (Los Alamos National Laboratory), February 2011. "Phase II Investigation Work Plan for Sites at Technical Area 49 Outside the Nuclear Environmental Site Boundary," Los Alamos National Laboratory document LA-UR-11-0553, Los Alamos, New Mexico. (LANL 2011, 111691)
- LANL (Los Alamos National Laboratory), March 2011. "Phase II Investigation Work Plan for Sites at Technical Area 49 Inside the Nuclear Environmental Site Boundary," Los Alamos National Laboratory document LA-UR-11-1818, Los Alamos, New Mexico. (LANL 2011, 201570)
- LANL (Los Alamos National Laboratory), June 2011. "Investigation Report for Ancho, Chaquehui, and Indio Canyons, Revision 1," Los Alamos National Laboratory document LA-UR-11-3305, Los Alamos, New Mexico. (LANL 2011, 204397)
- NMED (New Mexico Environment Department), April 6, 2010. "Approval, Request for Certificates of Completion for Two Solid Waste Management Units and Five Areas of Concern in the North Ancho Canyon Aggregate Area," New Mexico Environment Department letter to G.J. Rael (DOE-LASO) and M.J. Graham (LANL) from J.P. Bearzi (NMED-HWB), Santa Fe, New Mexico. (NMED 2010, 110430)